



# Statistical Update on LAX Aircraft Operations

- 25L Departures
- Palos Verdes Peninsula Overflights

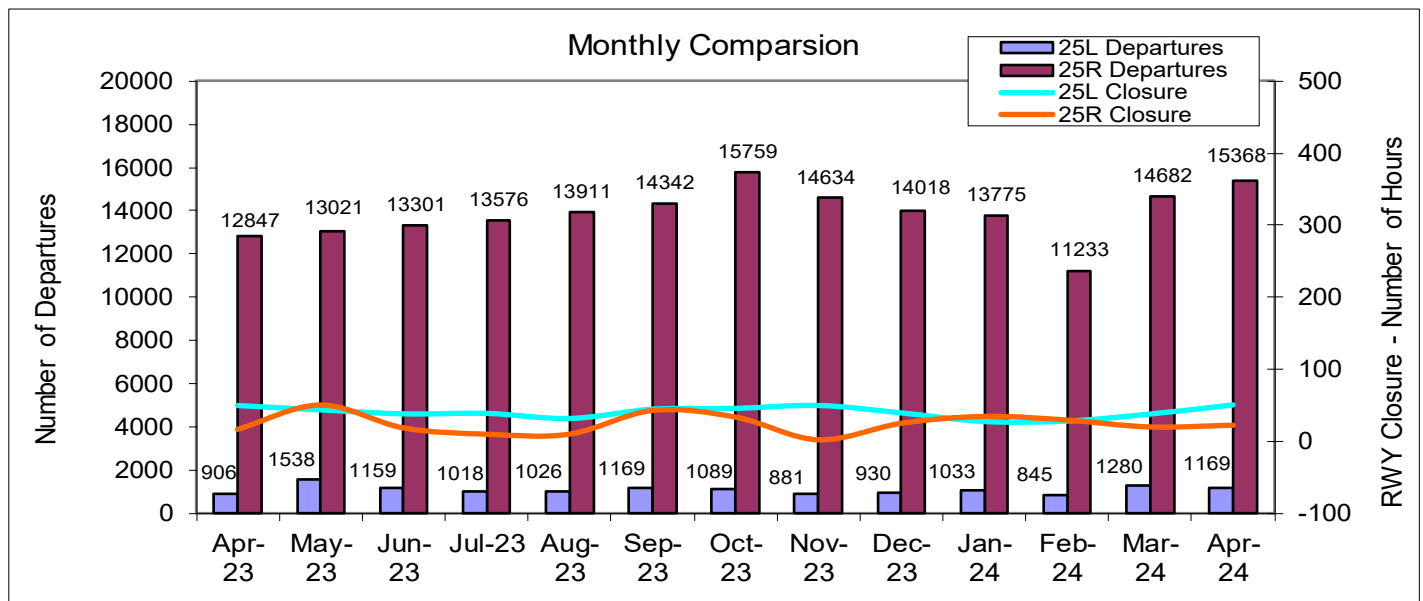
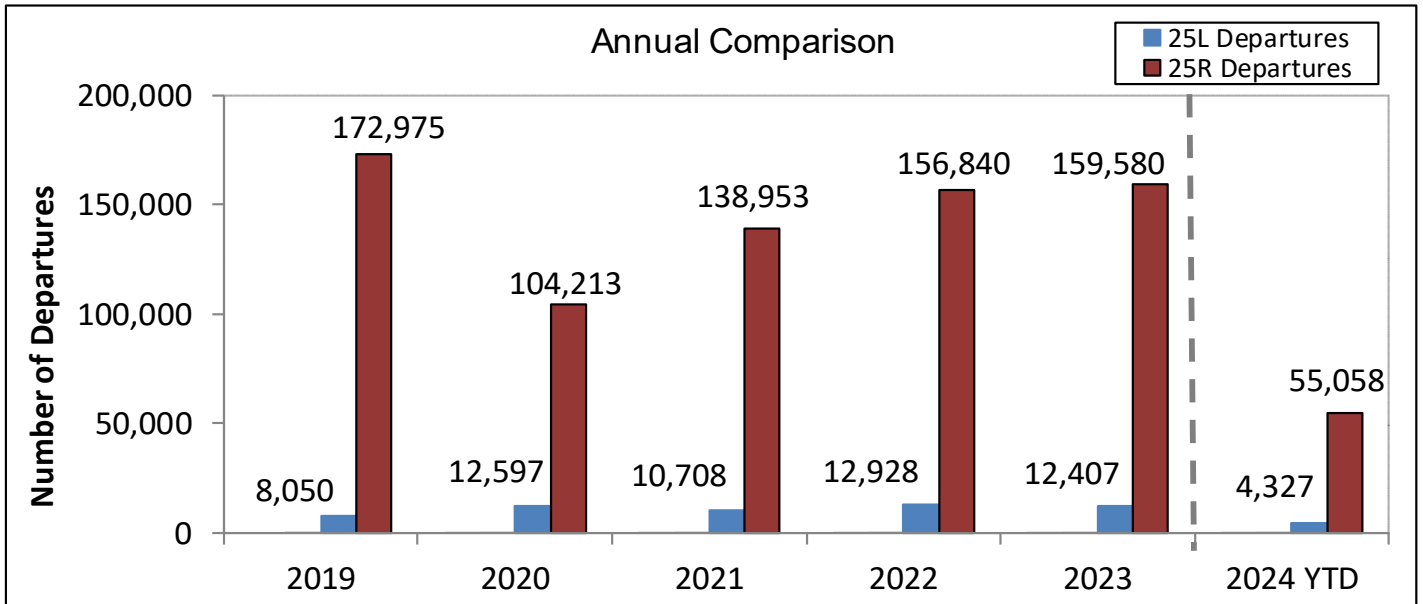
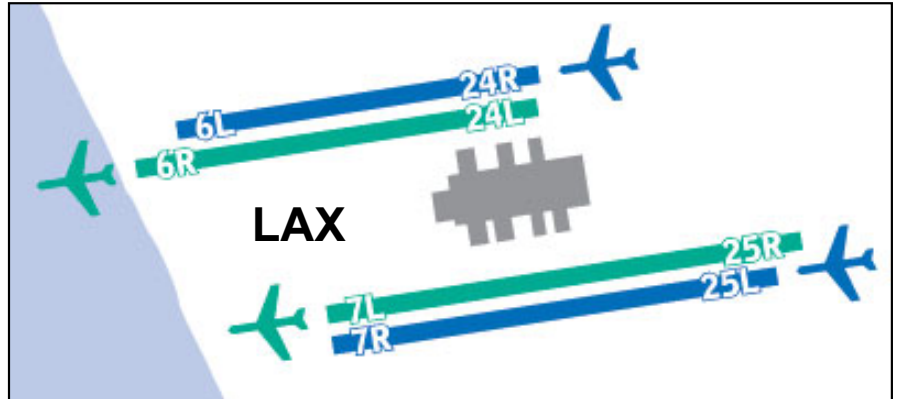
**May 15, 2024**

**LAX/Community Noise Roundtable**

# Departures from Runways 25L and 25R

Daytime LAX preferential runway use consists of aircraft departing on inner runways and arriving on outer runways for noise abatement.

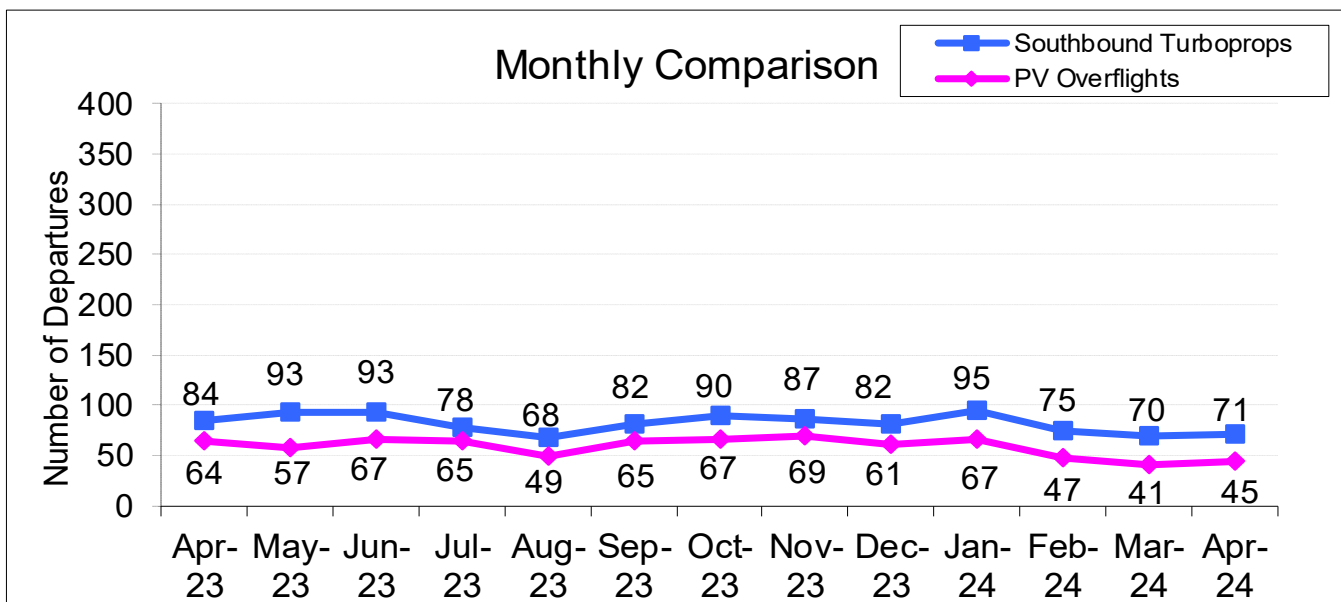
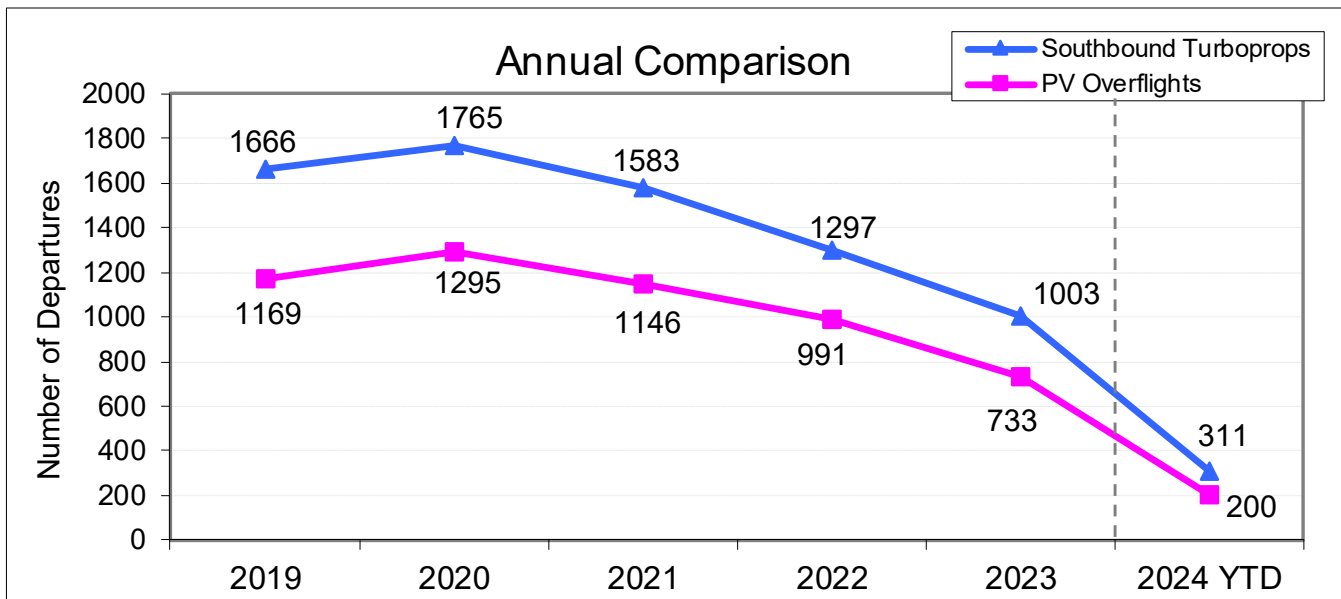
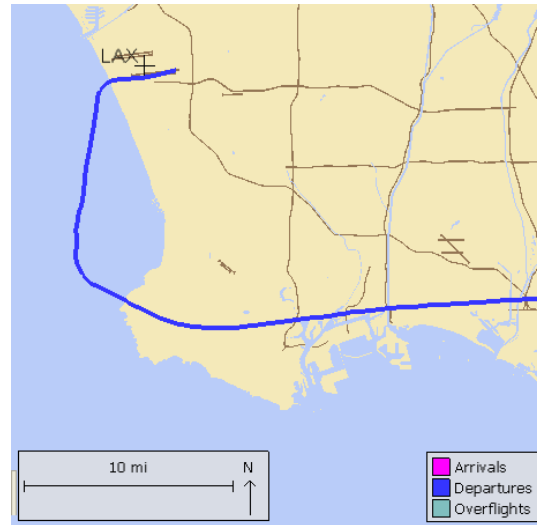
The graphs below show statistics related to aircraft departing runways 25L and 25R at LAX.



The graphs below show statistics of southbound turboprop aircraft that depart from LAX and fly over the Palos Verdes Peninsula, following an established FAA departure route.

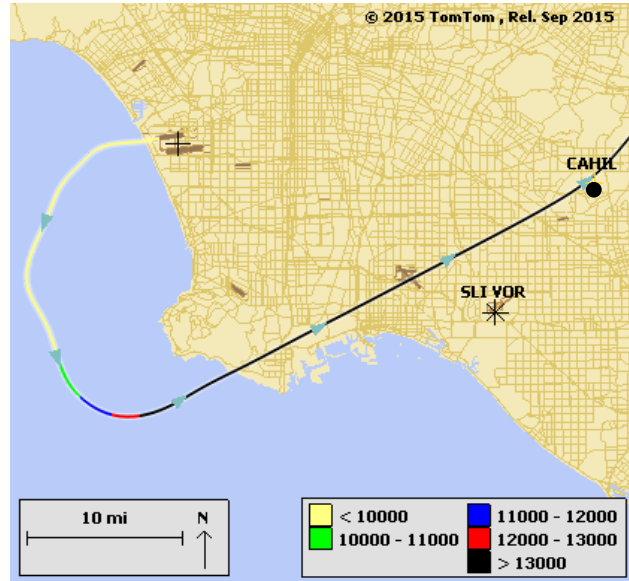
**Note:** Prior to SkyWest's fleet mix change (turboprop to jet aircraft) in early 2015, the number of southbound turboprop departures were about 800 per month, with around 300 aircraft flying over the PV Peninsula.

Sample Turboprop Departure Flight Track

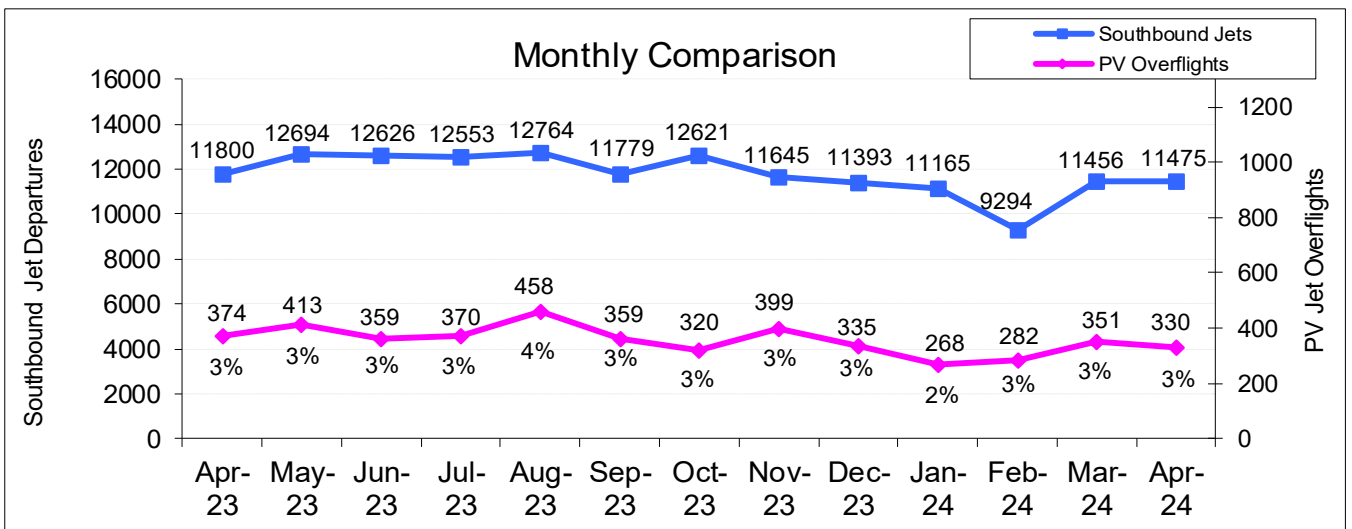
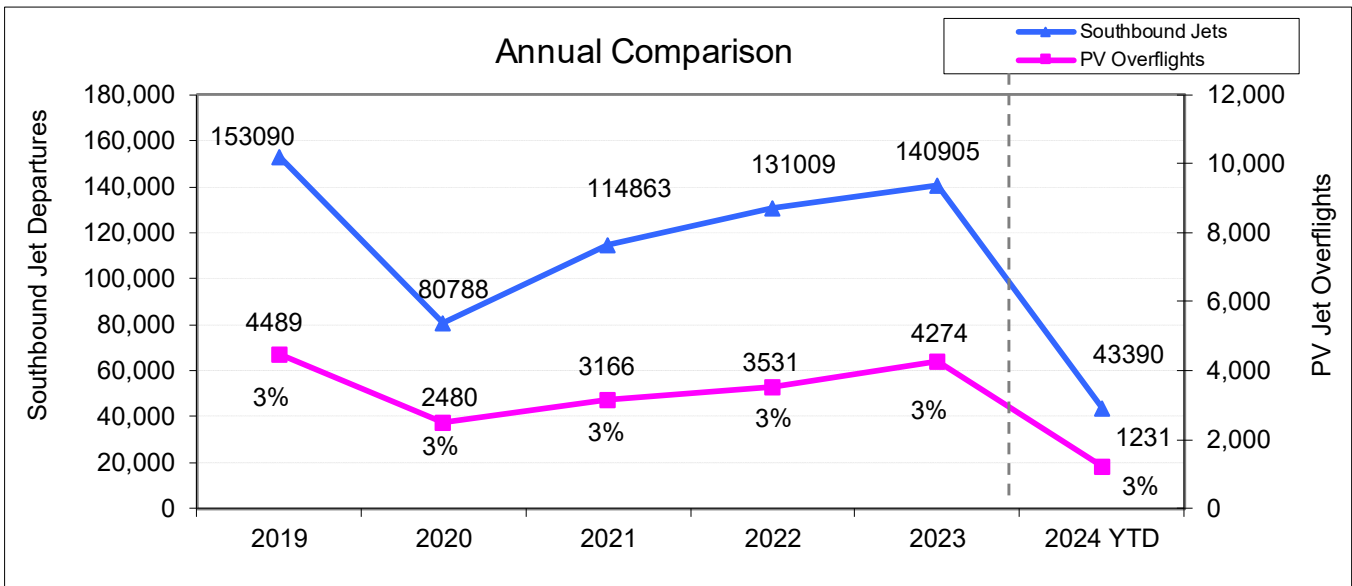


# Palos Verdes Peninsula – Jet Overflights

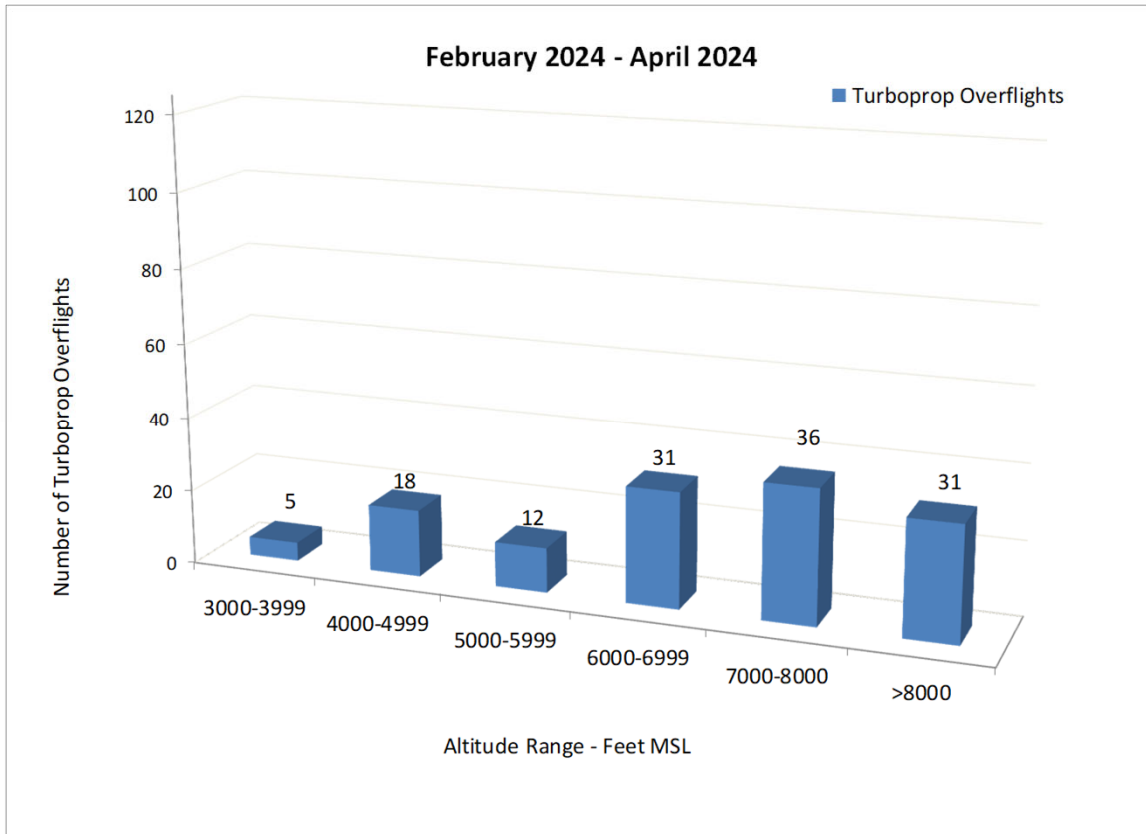
Sample Jet Departure Flight Track Over PV Peninsula



The graphs below show the total number of jets turning south upon departure from LAX and the number of those departures that fly over the Palos Verdes Peninsula.



## Turboprop Altitudes over PV Peninsula



## Jet Altitudes over PV Peninsula

