



AIRSIDE SAFETY BULLETIN ISSUE NO.1 – Sept 2015



14 Foot Height Restriction for Vehicle Service Roads

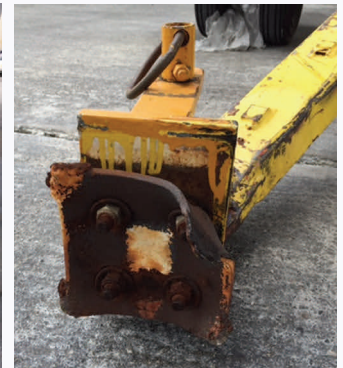
To enhance safety on the AOA, all operators of vehicles and equipment over 14 feet in height must obtain approval from LAWA (424) 646-5292 prior to accessing the vehicle service roads on the AOA. Placards have been affixed to equipment over 14 feet in height and signs installed at various locations on the AOA as a reminder of this restriction.



Note: This requirement does not apply to vehicles operating on Vehicle Service Road A.

Ground Service Equipment Hitch Inspections

Damaged or faulty hitches lead to accidents, injuries, and property damage. All vehicle and GSE hitches must be inspected prior to towing dollies, cargo, and equipment.



Park Vehicles/GSE in Designated Areas Only

Improper parking of vehicles and ground service equipment at the terminal gates continues to occur. All GSE and vehicles must be parked in designated staging and parking areas only.

To prevent accidents, injuries, and property damage vehicles must not be driven underneath or parked in close proximity to passenger boarding bridges.



WATCH SPEED ON SERVICE ROADS AND RAMP AREAS!

This Safety Bulletin is published as part of a continuing program to increase safety at LAX. Please post for employee viewing. Questions or comments? Call or email Airport Operations - Regulatory Compliance and Standards Unit (424) 646-5883 / regulatorycompliance@lawa.org. For all other airport related concerns, contact the Airport Response Coordination Center (ARCC) (424) 646-5292 or visit the LAX Rules & Regulations website. (<http://www.lawa.org/airops.aspx?id=862>)