

# California State Airport Noise Standards Quarterly Report

Fourth Quarter 2024



LOS ANGELES INTERNATIONAL AIRPORT

Los Angeles World Airports

February 20, 2025

## **TABLE OF CONTENTS**

---

### California State Airport Noise Standards Quarterly Report

1. Division of Aeronautics Form 617
2. Incompatible Land Use Data
3. Daily Aircraft CNEL Data
4. Runway Utilization Report
  - Summary of Runway Use
  - Summary of Runway Flow
5. Average Daily Runway Use by Aircraft Type
  - 24 Hour Average
  - Night-time Average (10pm – 7am)
6. Average Daily Runway Use by Aircraft Group
  - 24 Hour Average
  - Night-time Average (10pm – 7am)
7. Summary of Actions

### Attachment

Noise contour map

**SUMMARY OF STATISTICAL INFORMATION  
FOR  
CALIFORNIA DEPARTMENT OF TRANSPORTATION**

Los Angeles International Airport  
Fourth Quarter 2024

1. Size of Noise Impact Area as defined in the Noise Standards (California Code of Regulations, Title 21, Chapter 2.5, Subchapter 6):

**398.9 Acres**

---

2. Estimated number of dwelling units included in the Noise Impact Area as defined in the Noise Standards:

**5,005**

---

3. Estimated number of people residing within the Noise Impact Area as defined in the Noise Standards:

**16,487**

---

4. Identification of aircraft type having highest takeoff noise level operating at this airport together with estimated number of operations by this aircraft type during the calendar quarter reporting period:

**B747: 2,815**

---

5. Total number of aircraft operations during the calendar quarter\*:

**147,081**

---

6. Number of Air Carrier operations during the calendar quarter: (Not Mandatory)\*

**138,278**

---

7. Percentage of Air Carrier operations by aircraft certificated under Federal Aviation Regulation (FAR) Part 36, Stage III. (Not Mandatory)

**100 %**

---

8. Estimated number of operations by General Aviation aircraft during the calendar quarter: (Not Mandatory)\*

**3,296**

---

9. Estimated number of operations by Military aircraft during the calendar quarter: (Not Mandatory)\*

**62**

---

# LOS ANGELES INTERNATIONAL AIRPORT

## Incompatible Land Use

### Annual Noise Impact Accumulated by Noise Zone: CNEL 65, 70, and 75 +

<b>4Q24</b>	<b>Total Cumulative Noise Impact Areas - All Jurisdictions</b>											
	<i>CNEL 65 dB and Above</i>				<i>CNEL 70 dB and Above</i>				<i>CNEL 75 dB and Above</i>			
	Land Use	Acres	Dwelling Units	Parcels	Population	Acres	Dwelling Units	Parcels	Population	Acres	Dwelling Units	Parcels
Single Family	192.1	1,324	1,354	4,459	35.9	239	243	895	1.2	4	4	15
Multi-Family	181.2	3,664	1,098	11,991	40.8	756	260	2,645	1.6	15	5	63
Mobile Home	0.6	0	2	0	0.0	0	0	0	0.0	0	0	0
Schools	6.6	0	26	0	3.0	0	17	0	0.0	0	0	0
Churches	17.8	17	35	37	2.4	0	2	0	0.0	0	0	0
Hospitals	0.6	0	2	0	0.0	0	0	0	0.0	0	0	0
<b>Total Incompatible</b>	<b>398.9</b>	<b>5,005</b>	<b>2,517</b>	<b>16,487</b>	<b>82.1</b>	<b>995</b>	<b>522</b>	<b>3,540</b>	<b>2.8</b>	<b>19</b>	<b>9</b>	<b>78</b>

Note: Parcels and dwelling units may not match for single family land uses due to subdivision.  
Parcels for multifamily land uses reflect only the common area parcel, except for condominiums.

# LOS ANGELES INTERNATIONAL AIRPORT

## Incompatible Land Use

### Annual Noise Impact Accumulated by Noise Zone: CNEL 65, 70, and 75 +

<b>4Q24</b>	<b>Total Cumulative Noise Impact Areas - Athens</b>											
	<i>CNEL 65 dB and Above</i>				<i>CNEL 70 dB and Above</i>				<i>CNEL 75 dB and Above</i>			
	Land Use	Acres	Dwelling Units	Parcels	Population	Acres	Dwelling Units	Parcels	Population	Acres	Dwelling Units	Parcels
Single Family	21.6	161	176	531	0.0	0	0	0	0.0	0	0	0
Multi-Family	25.0	453	160	1,437	0.0	0	0	0	0.0	0	0	0
Mobile Home	0.0	0	0	0	0.0	0	0	0	0.0	0	0	0
Schools	0.0	0	0	0	0.0	0	0	0	0.0	0	0	0
Churches	1.3	3	6	6	0.0	0	0	0	0.0	0	0	0
Hospitals	0.0	0	0	0	0.0	0	0	0	0.0	0	0	0
<b>Total Incompatible</b>	<b>47.9</b>	<b>617</b>	<b>342</b>	<b>1,974</b>	<b>0.0</b>	<b>0</b>	<b>0</b>	<b>0</b>	<b>0.0</b>	<b>0</b>	<b>0</b>	<b>0</b>

Note: Parcels and dwelling units may not match for single family land uses due to subdivision.  
Parcels for multifamily land uses reflect only the common area parcel, except for condominiums.

Report Date: Feb, 19 2025

# LOS ANGELES INTERNATIONAL AIRPORT

## Incompatible Land Use

### Annual Noise Impact Accumulated by Noise Zone: CNEL 65, 70, and 75 +

<b>4Q24</b>	<b>Total Cumulative Noise Impact Areas - Del Aire</b>											
	<i>CNEL 65 dB and Above</i>				<i>CNEL 70 dB and Above</i>				<i>CNEL 75 dB and Above</i>			
	Land Use	Acres	Dwelling Units	Parcels	Population	Acres	Dwelling Units	Parcels	Population	Acres	Dwelling Units	Parcels
Single Family	0.0	0	0	0	0.0	0	0	0	0.0	0	0	0
Multi-Family	0.0	0	0	0	0.0	0	0	0	0.0	0	0	0
Mobile Home	0.0	0	0	0	0.0	0	0	0	0.0	0	0	0
Schools	0.0	0	0	0	0.0	0	0	0	0.0	0	0	0
Churches	0.0	0	0	0	0.0	0	0	0	0.0	0	0	0
Hospitals	0.0	0	0	0	0.0	0	0	0	0.0	0	0	0
<b>Total Incompatible</b>	<b>0.0</b>	<b>0</b>	<b>0</b>	<b>0</b>	<b>0.0</b>	<b>0</b>	<b>0</b>	<b>0</b>	<b>0.0</b>	<b>0</b>	<b>0</b>	<b>0</b>

Note: Parcels and dwelling units may not match for single family land uses due to subdivision.  
 Parcels for multifamily land uses reflect only the common area parcel, except for condominiums.

Report Date: Feb, 19 2025

# LOS ANGELES INTERNATIONAL AIRPORT

## Incompatible Land Use

### Annual Noise Impact Accumulated by Noise Zone: CNEL 65, 70, and 75 +

<b>4Q24</b>	<b>Total Cumulative Noise Impact Areas - City of El Segundo</b>											
	<i>CNEL 65 dB and Above</i>				<i>CNEL 70 dB and Above</i>				<i>CNEL 75 dB and Above</i>			
	Land Use	Acres	Dwelling Units	Parcels	Population	Acres	Dwelling Units	Parcels	Population	Acres	Dwelling Units	Parcels
Single Family	48.0	314	315	830	2.1	12	12	25	0.0	0	0	0
Multi-Family	13.2	382	146	815	4.1	160	69	327	0.0	0	0	0
Mobile Home	0.0	0	0	0	0.0	0	0	0	0.0	0	0	0
Schools	0.0	0	0	0	0.0	0	0	0	0.0	0	0	0
Churches	0.7	0	2	0	0.0	0	0	0	0.0	0	0	0
Hospitals	0.0	0	0	0	0.0	0	0	0	0.0	0	0	0
<b>Total Incompatible</b>	<b>61.9</b>	<b>696</b>	<b>463</b>	<b>1,646</b>	<b>6.2</b>	<b>172</b>	<b>81</b>	<b>352</b>	<b>0.0</b>	<b>0</b>	<b>0</b>	<b>0</b>

Note: Parcels and dwelling units may not match for single family land uses due to subdivision.  
Parcels for multifamily land uses reflect only the common area parcel, except for condominiums.

Report Date: Feb, 19 2025

# LOS ANGELES INTERNATIONAL AIRPORT

## Incompatible Land Use

### Annual Noise Impact Accumulated by Noise Zone: CNEL 65, 70, and 75 +

<b>4Q24</b>	<b>Total Cumulative Noise Impact Areas - City of Inglewood</b>											
	<i>CNEL 65 dB and Above</i>				<i>CNEL 70 dB and Above</i>				<i>CNEL 75 dB and Above</i>			
	Land Use	Acres	Dwelling Units	Parcels	Population	Acres	Dwelling Units	Parcels	Population	Acres	Dwelling Units	Parcels
Single Family	63.6	444	452	1,566	2.8	19	20	73	0.0	0	0	0
Multi-Family	89.3	1,996	483	6,650	6.9	189	27	760	0.0	0	0	0
Mobile Home	0.6	0	2	0	0.0	0	0	0	0.0	0	0	0
Schools	1.4	0	1	0	0.0	0	0	0	0.0	0	0	0
Churches	10.4	11	16	22	2.1	0	1	0	0.0	0	0	0
Hospitals	0.6	0	2	0	0.0	0	0	0	0.0	0	0	0
<b>Total Incompatible</b>	<b>165.9</b>	<b>2,451</b>	<b>956</b>	<b>8,238</b>	<b>11.8</b>	<b>208</b>	<b>48</b>	<b>834</b>	<b>0.0</b>	<b>0</b>	<b>0</b>	<b>0</b>

Note: Parcels and dwelling units may not match for single family land uses due to subdivision.  
Parcels for multifamily land uses reflect only the common area parcel, except for condominiums.

Report Date: Feb, 19 2025



# LOS ANGELES INTERNATIONAL AIRPORT

## Incompatible Land Use

### Annual Noise Impact Accumulated by Noise Zone: CNEL 65, 70, and 75 +

<b>4Q24</b>	<b>Total Cumulative Noise Impact Areas - Lennox</b>											
	<i>CNEL 65 dB and Above</i>				<i>CNEL 70 dB and Above</i>				<i>CNEL 75 dB and Above</i>			
	Land Use	Acres	Dwelling Units	Parcels	Population	Acres	Dwelling Units	Parcels	Population	Acres	Dwelling Units	Parcels
Single Family	52.3	359	364	1,382	31.1	208	211	796	1.2	4	4	15
Multi-Family	49.5	745	282	2,786	29.9	407	164	1,558	1.6	15	5	63
Mobile Home	0.0	0	0	0	0.0	0	0	0	0.0	0	0	0
Schools	5.2	0	25	0	3.0	0	17	0	0.0	0	0	0
Churches	1.6	1	3	4	0.3	0	1	0	0.0	0	0	0
Hospitals	0.0	0	0	0	0.0	0	0	0	0.0	0	0	0
<b>Total Incompatible</b>	<b>108.6</b>	<b>1,105</b>	<b>674</b>	<b>4,172</b>	<b>64.3</b>	<b>615</b>	<b>393</b>	<b>2,354</b>	<b>2.8</b>	<b>19</b>	<b>9</b>	<b>78</b>

Note: Parcels and dwelling units may not match for single family land uses due to subdivision.  
Parcels for multifamily land uses reflect only the common area parcel, except for condominiums.

Report Date: Feb, 19 2025

# LOS ANGELES INTERNATIONAL AIRPORT

## Incompatible Land Use

### Annual Noise Impact Accumulated by Noise Zone: CNEL 65, 70, and 75 +

<b>4Q24</b>	<b>Total Cumulative Noise Impact Areas - South and South East LA</b>											
	<i>CNEL 65 dB and Above</i>				<i>CNEL 70 dB and Above</i>				<i>CNEL 75 dB and Above</i>			
	Land Use	Acres	Dwelling Units	Parcels	Population	Acres	Dwelling Units	Parcels	Population	Acres	Dwelling Units	Parcels
Single Family	6.5	46	47	150	0.0	0	0	0	0.0	0	0	0
Multi-Family	4.1	88	27	302	0.0	0	0	0	0.0	0	0	0
Mobile Home	0.0	0	0	0	0.0	0	0	0	0.0	0	0	0
Schools	0.0	0	0	0	0.0	0	0	0	0.0	0	0	0
Churches	2.5	1	7	4	0.0	0	0	0	0.0	0	0	0
Hospitals	0.0	0	0	0	0.0	0	0	0	0.0	0	0	0
<b>Total Incompatible</b>	<b>13.1</b>	<b>135</b>	<b>81</b>	<b>456</b>	<b>0.0</b>	<b>0</b>	<b>0</b>	<b>0</b>	<b>0.0</b>	<b>0</b>	<b>0</b>	<b>0</b>

Note: Parcels and dwelling units may not match for single family land uses due to subdivision.  
 Parcels for multifamily land uses reflect only the common area parcel, except for condominiums.

Report Date: Feb, 19 2025

# LOS ANGELES INTERNATIONAL AIRPORT

## Incompatible Land Use

### Annual Noise Impact Accumulated by Noise Zone: CNEL 65, 70, and 75 +

<b>4Q24</b>	<b>Total Cumulative Noise Impact Areas - Westchester/Playa Del Rey</b>											
	<i>CNEL 65 dB and Above</i>				<i>CNEL 70 dB and Above</i>				<i>CNEL 75 dB and Above</i>			
	Land Use	Acres	Dwelling Units	Parcels	Population	Acres	Dwelling Units	Parcels	Population	Acres	Dwelling Units	Parcels
Single Family	0.0	0	0	0	0.0	0	0	0	0.0	0	0	0
Multi-Family	0.0	0	0	0	0.0	0	0	0	0.0	0	0	0
Mobile Home	0.0	0	0	0	0.0	0	0	0	0.0	0	0	0
Schools	0.0	0	0	0	0.0	0	0	0	0.0	0	0	0
Churches	1.3	1	1	1	0.0	0	0	0	0.0	0	0	0
Hospitals	0.0	0	0	0	0.0	0	0	0	0.0	0	0	0
<b>Total Incompatible</b>	<b>1.3</b>	<b>1</b>	<b>1</b>	<b>1</b>	<b>0.0</b>	<b>0</b>	<b>0</b>	<b>0</b>	<b>0.0</b>	<b>0</b>	<b>0</b>	<b>0</b>

Note: Parcels and dwelling units may not match for single family land uses due to subdivision.  
 Parcels for multifamily land uses reflect only the common area parcel, except for condominiums.

Report Date: Feb, 19 2025



October	PDR1	PDR2	ESG1	ESG2	ESG3	ESG5	DEL1	WCH2	WCH3	WCH5	WCH6	ING1	ING2	ING3	ING6	ING8	LNX1	LNX2	LNX3	LNX4	ATH2	SLA1	SLA3	SLA5	SLA7
1 Tue	66	60	61	64	57	52	50	58	58	74	63	60	66	67	67	59	74	61	61	64	65	64	61	63	63
2 Wed	66	60	61	65	57	51	43	58	59	73	61	60	65	66	68	61	73	64	60	63	66	64	61	64	64
3 Thu	66	61	61	65	59	50	45	59	57	73	62	59	64	65	69	59	76	61	62	65	66	63	62	64	64
4 Fri	67	61	62	66	59	52	43	58	59	73	62	58	65	66	70	60	76	62	63	66	66	63	61	64	65
5 Sat	64	55	57	63	54	53	42	54	56	72	61	56	63	64	68	57	74	61	60	64	65	62	59	62	63
6 Sun	63	57	59	64	56	52	33	54	53	73	62	58	65	65	68	59	75	60	60	63	66	64	61	64	64
7 Mon	65	61	60	64	56	53	42	56	56	72	61	57	64	65	69	59	75	61	60	64	66	63	62	64	64
8 Tue	65	59	60	65	57	53	47	55	56	71	60	57	64	63	69	59	75	63	61	66	66	62	61	64	64
9 Wed	64	58	59	64	57	53	46	55	55	72	61	59	64	64	69	59	76	62	61	66	67	62	61	65	65
10 Thu	67	61	62	66	61	55	42	57	59	73	62	59	66	66	70	60	76	62	62	65	66	64	61	64	64
11 Fri	67	61	61	65	58	53	44	58	60	75	63	60	67	68	69	61	74	62	61	65	66	65	62	65	64
12 Sat	65	59	61	66	59	54	34	57	57	72	61	58	64	65	69	60	75	61	63	65	66	63	62	64	64
13 Sun	67	61	62	66	59	53	36	57	56	74	63	60	66	68	69	60	75	61	62	65	66	64	62	64	64
14 Mon	67	63	63	67	59	56	36	59	59	73	62	60	65	66	70	60	75	62	62	65	66	64	62	65	64
15 Tue	66	61	63	67	60	55	52	56	56	72	61	58	64	65	70	61	76	62	62	66	67	63	63	65	65
16 Wed	66	61	63	67	60	55	39	56	53	72	61	58	64	65	70	62	76	62	65	66	67	63	64	65	65
17 Thu	68	62	63	67	61	54	37	58	57	74	63	64	66	67	70	62	74	64	63	67	68	66	62	65	65
18 Fri	65	59	64	67	63	61	55	62	62	73	62	59	64	66	70	62	76	62	63	66	69	64	63	65	65
19 Sat	65	58	62	66	62	64	58	59	65	71	60	57	63	63	68	60	74	63	62	64	65	63	60	64	61
20 Sun	67	61	63	67	64	64	56	63	64	73	62	60	66	66	68	59	74	61	62	66	66	64	61	64	68
21 Mon	67	62	64	67	64	64	60	63	63	72	61	59	64	65	69	60	75	62	63	65	66	63	62	65	64
22 Tue	68	62	64	67	63	60	52	61	64	70	61	57	63	64	70	60	75	62	64	66	67	61	62	65	64
23 Wed	67	62	63	67	64	64	56	60	64	71	60	58	64	67	70	61	76	62	64	66	67	62	62	65	65
24 Thu	66	61	63	67	63	62	47	58	62	74	63	61	66	67	69	61	75	62	62	65	66	64	61	64	64
25 Fri	65	59	62	67	61	57	40	58	61	73	62	60	67	66	71	62	75	66	62	65	67	64	62	65	65
26 Sat	66	61	62	67	60	56	40	58	63	71	61	58	64	65	70	64	75	62	63	66	67	62	60	65	65
27 Sun	67	61	64	67	61	58	41	61	62	73	62	59	65	66	70	61	76	61	63	66	67	64	63	65	65
28 Mon	67	62	64	68	60	57	45	59	59	73	62	63	65	66	69	61	77	63	64	65	67	64	63	66	65
29 Tue	66	61	63	67	61	61	54	60	58	72	62	62	65	67	68	61	73	62	61	64	66	65	61	64	64
30 Wed	67	62	63	67	63	65	56	59	58	72	62	64	65	65	70	62	75	64	63	65	68	64	62	66	66
31 Thu	67	61	63	67	63	63	49	61	62	72	62	60	65	66	69	63	73	63	61	63	66	64	61	64	65



November	PDR1	PDR2	ESG1	ESG2	ESG3	ESG5	DEL1	WCH2	WCH3	WCH5	WCH6	ING1	ING2	ING3	ING6	ING8	LNX1	LNX2	LNX3	LNX4	ATH2	SLA1	SLA3	SLA5	SLA7
1 Fri	67	61	63	67	61	58	39	64	65	73	62	63	66	66	68	61	74	61	61	64	69	64	61	64	64
2 Sat	66	61	64	68	61	58	41	60	61	71	60	58	64	64	68	59	73	60	60	64	65	63	61	64	64
3 Sun	65	58	65	69	64	63	62	55	55	72	61	57	64	65	66	58	72	59	58	62	64	63	60	63	62
4 Mon	66	61	62	66	61	65	49	62	61	71	60	59	64	64	68	60	74	62	64	64	66	62	62	65	64
5 Tue	65	59	63	67	61	60	53	63	58	70	60	56	64	63	68	58	73	58	58	63	64	61	60	63	62
6 Wed	64	57	61	66	60	61	53	61	59	68	62	61	61	61	65	61	70	67	63	63	61	59	59	60	59
7 Thu	64	59	62	66	61	60	52	64	65	71	61	58	64	64	67	59	73	62	61	63	63	62	60	62	61
8 Fri	64	59	62	67	62	66	52	62	63	72	61	57	63	64	67	58	73	59	62	62	62	61	58	62	61
9 Sat	66	60	62	66	63	62	52	62	61	71	60	57	62	63	66	57	72	62	61	62	63	62	58	62	61
10 Sun	66	60	63	66	61	60	50	62	63	72	61	58	64	65	67	58	73	59	60	63	63	62	59	62	63
11 Mon	67	63	63	67	62	61	50	64	64	73	64	59	66	67	68	60	73	62	60	64	65	64	61	64	63
12 Tue	65	59	64	68	64	64	58	60	57	71	61	58	64	64	67	59	73	60	60	63	65	62	60	63	63
13 Wed	67	61	63	66	63	63	60	60	63	71	60	58	63	64	66	58	72	60	61	62	63	62	59	62	62
14 Thu	67	63	64	67	62	58	46	60	63	73	62	60	65	66	68	60	74	61	62	64	66	64	61	64	64
15 Fri	67	61	65	68	63	59	52	57	56	72	61	63	65	67	68	60	73	61	60	64	64	64	60	63	63
16 Sat	65	59	63	68	62	62	56	53	54	71	60	61	63	64	67	58	72	59	60	63	65	62	60	63	63
17 Sun	65	60	63	67	62	63	52	64	60	72	61	58	64	65	67	59	72	59	60	62	64	63	60	63	62
18 Mon	65	62	64	68	64	63	58	60	60	63	57	61	60	66	70	62	75	62	61	66	68	62	63	66	66
19 Tue	65	60	64	68	66	66	60	58	60	61	56	60	59	65	69	61	75	61	61	66	67	61	62	66	65
20 Wed	65	60	63	67	64	65	58	58	61	64	56	60	60	64	69	60	75	62	64	65	66	60	61	65	64
21 Thu	67	62	64	67	65	63	54	64	66	71	62	60	64	65	69	60	76	63	65	66	66	62	61	65	64
22 Fri	67	61	65	67	62	60	52	64	62	73	62	60	65	66	68	60	74	61	62	64	65	68	60	64	63
23 Sat	67	61	64	68	61	56	44	61	59	72	61	58	65	65	68	59	73	59	59	63	65	63	60	63	63
24 Sun	68	62	63	67	61	56	47	58	61	74	63	60	66	67	70	61	75	61	62	65	67	65	62	66	66
25 Mon	68	63	64	67	62	63	52	61	62	73	62	59	65	66	68	60	73	61	60	63	65	65	61	64	64
26 Tue	68	62	63	67	61	57	51	60	59	72	61	57	64	65	67	58	73	58	59	63	65	63	60	63	63
27 Wed	66	61	61	65	60	53	39	58	56	74	63	60	66	67	69	60	75	63	60	64	66	65	60	64	64
28 Thu	65	60	61	65	61	61	56	55	58	70	58	56	62	62	67	58	74	59	59	63	65	61	61	63	63
29 Fri	63	58	62	65	61	62	57			69	58	55	61	62	65	57	71	57	55	60	62	60	58	61	61
30 Sat	66	60	61	65	61	61	64	60	60	72	61	60	64	64	66	56	73	58	59	62	64	62	59	62	61



December	PDR1	PDR2	ESG1	ESG2	ESG3	ESG5	DEL1	WCH2	WCH3	WCH5	WCH6	ING1	ING2	ING3	ING6	ING8	LNX1	LNX2	LNX3	LNX4	ATH2	SLA1	SLA3	SLA5	SLA7
1 Sun	67	62	63	67	62	60	53	65	65	73	63	60	65	66	69	58	74	61	61	63	64	63	60	63	62
2 Mon	66	62	63	67	62	58	53	65	63	73	62	59	65	66	67	59	73	60	61	63	64	64	61	63	62
3 Tue	67	62	63	67	61	57	49	63	61	72	61	58	64	65	68	59	74	60	61	64	65	63	62	63	63
4 Wed	67	62	63	67	61	56	43	58	62	73	62	59	65	66	69	61	74	64	61	64	66	63	62	64	64
5 Thu	68	62	63	67	61	58	41	61	62	73	62	60	66	66	68	59	74	61	61	64	65	64	62	63	63
6 Fri	65	60	63	67	64	64	63	61	64	72	62	60	65	66	69	61	75	62	65	65	67	63	62	66	65
7 Sat	65	59	63	68	63	63	60	63	64	71	60	58	62	63	66	57	72	60	62	62	65	61	60	63	61
8 Sun	67	62	63	67	62	60	46	62	58	72	62	58	65	65	67	58	73	59	60	63	64	63	60	63	62
9 Mon	69	64	63	67	61	61	55	63	65	72	62	59	64	65	69	61	75	62	63	65	67	63	63	66	65
10 Tue	66	58	60	64	60	61	55	57	63	69	57	53	60	60	66	58	74	60	63	63	63	58	59	62	62
11 Wed	63	58	58	64	62	63	58	54	54	69	57	53	60	61	65	56	72	64	58	61	62	59	61	61	60
12 Thu	66	61	63	67	62	59	53	63	61	72	61	59	65	65	67	59	73	62	60	63	65	63	63	64	64
13 Fri	68	62	64	68	63	61	49	61	63	73	62	63	65	66	69	60	74	61	61	64	66	65	61	64	64
14 Sat	68	62	63	67	62	60	49	62	61	73	62	59	65	66	69	60	74	62	66	65	66	64	63	64	64
15 Sun	66	60	64	68	65	64	57	64	61	73	62	59	65	65	68	59	73	60	62	63	65	64	61	64	63
16 Mon	65	61	63	67	63	63	53	65	63	72	62	60	65	65	68	59	73	62	61	63	65	63	63	64	63
17 Tue	67	61	63	67	64	65	61	64	63	72	61	60	64	65	67	60	73	61	62	63	65	63	61	64	63
18 Wed	65	59	62	67	64	66	63	63	62	71	60	58	63	64	66	58	72	59	61	62	64	62	59	63	62
19 Thu	68	62	64	69	67	68	63	68	66	73	63	60	65	65	68	60	74	61	62	64	65	63	61	67	63
20 Fri	67	62	63	67	63	63	57	63	63	74	64	63	66	67	70	61	76	63	62	66	67	64	63	65	65
21 Sat	67	62	64	68	62	61	46	65	66	73	63	60	66	66	70	61	76	62	64	66	67	64	64	68	67
22 Sun	67	62	64	68	62	66	46	65	62	73	62	59	65	66	67	59	73	61	60	63	65	64	60	63	64
23 Mon	68	63	62	66	61	61	52	62	60	75	63	61	66	67	69	60	75	61	61	65	66	65	62	64	64
24 Tue	65	59	62	67	63	63	57	60	58	74	62	59	65	66	68	59	77	60	60	63	65	64	64	64	64
25 Wed	65	59	63	67	64	62	53	58	59	71	60	58	63	64	66	60	72	59	60	63	65	62	60	63	63
26 Thu	67	62	63	67	62	59	46	65	66	72	61	59	64	65	67	59	73	60	60	63	66	63	60	63	63
27 Fri	68	63	63	67	61	57	39	65	62	74	62	60	66	67	69	61	75	61	62	65	68	65	62	65	64
28 Sat	68	63	63	67	61	56	47	62	62	74	63	62	66	67	69	61	75	62	64	65	69	65	62	65	65
29 Sun	68	63	63	67	61	57	48	64	61	74	63	60	66	67	69	60	74	61	61	64	68	65	62	64	64
30 Mon	68	63	64	68	62	63	44	59	61	73	62	59	66	66	68	60	74	62	61	64	67	64	62	64	64
31 Tue	67	62	62	66	61	57	50	60	57	72	64	59	68	65	69	59	76	65	64	65	68	63	61	65	65



Runway Utilization Report  
**Summary of Runway Use (Average)**  
 Los Angeles International Airport

Period : 10/01/2024 to 12/31/2024

Airline : ALL

Aircraft : ALL

Time Period	Percent Daily Operations Per Runway								Average Operations	Runway Complex		Runway Flow		In Board	Out Board	
	06L	06R	07L	07R	24L	24R	25L	25R		South	North	West	East			
<b>Departures</b>																
<b>Total Hours</b>																
24 Hours	0%	<1%	<1%	<1%	32%	3%	4%	60%	795	65%	35%	100%	<1 %	93%	7%	
<b>CNEL Hours</b>																
0700 - 1900	0%	<1%	<1%	<1%	36%	3%	5%	56%	531	61%	39%	100%	<1 %	92%	8%	
1900 - 2200	0%	<1%	<1%	<1%	35%	2%	4%	57%	100	62%	38%	99%	<1 %	93%	7%	
2200 - 0700	0%	<1%	<1%	<1%	19%	1%	3%	77%	164	80%	20%	99%	<1 %	96%	4%	
<b>Contra Hours</b>																
Midnight - 0630	0%	0%	<1%	<1%	10%	<1%	4%	85%	83	89%	11%	100%	<1 %	95%	5%	
0630 - Midnight	0%	<1%	<1%	<1%	35%	3%	4%	57%	712	62%	38%	100%	<1 %	93%	7%	
<b>Arrivals</b>																
<b>Total Hours</b>																
24 Hours	<1%	2%	<1%	<1%	2%	42%	53%	<1%	795	54%	46%	97%	3%	5%	95%	
<b>CNEL Hours</b>																
0700 - 1900	<1%	0%	<1%	<1%	2%	45%	53%	<1%	526	53%	47%	100%	<1 %	2%	98%	
1900 - 2200	<1%	0%	0%	<1%	2%	45%	53%	<1%	146	53%	47%	99%	<1 %	2%	98%	
2200 - 0700	<1%	16%	<1%	<1%	1%	27%	53%	2%	123	56%	44%	83%	17%	19%	81%	
<b>Contra Hours</b>																
Midnight - 0630	<1%	40%	<1%	<1%	1%	12%	41%	4%	47	46%	54%	58%	42%	46%	54%	
0630 - Midnight	<1%	<1%	<1%	<1%	2%	44%	54%	<1%	747	54%	46%	100%	<1 %	2%	98%	

All values are rounded to the nearest whole number.



Runway Utilization Report  
 Summary of Runway Flow (Average)  
 Los Angeles International Airport

Period: 10/01/2024 to 12/31/2024

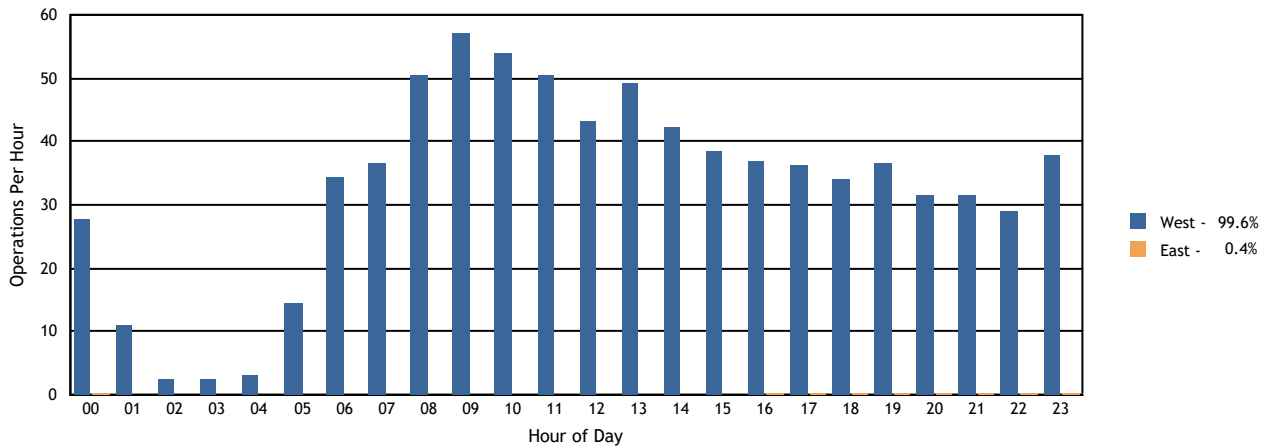
Airline : ALL

Aircraft : ALL

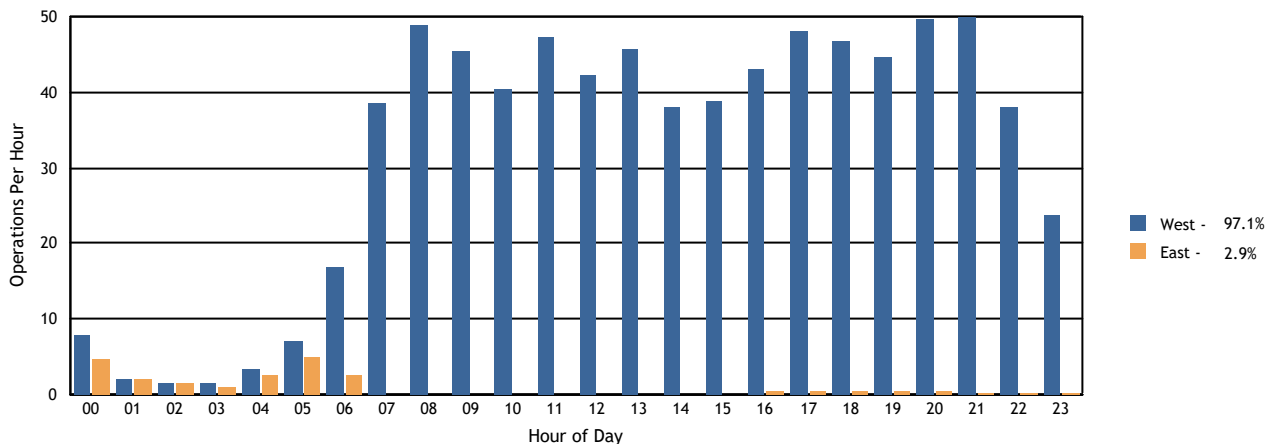
Time Period	Departures			Arrivals			Departures		Arrivals	
	West	East	Average	West	East	Average	West	East	West	East
<b>Total Hours</b>										
24 Hours	792	3	795	771	23	795	100%	<1%	97%	3%
<b>CNEL Hours</b>										
0700-1900	530	1	531	524	1	526	100%	<1%	100%	<1%
1900-2200	99	<1	100	144	1	146	99%	<1%	99%	<1%
2200-0700	163	<1	164	103	20	123	99%	<1%	83%	17%
<b>Contra Hours</b>										
Midnight - 0630	83	<1	83	28	20	47	100%	<1%	58%	42%
0630 - Midnight	709	3	712	744	3	747	100%	<1%	100%	<1%

All percentages are rounded to the nearest whole number.

Departures Per Hour by Operational Direction



Arrivals Per Hour by Operational Direction





## LAX Average Daily Runway Use By Aircraft Type - 24 Hours Fourth Quarter 2024

Arrivals (Average Daily Operations)								
Aircraft Type	06L	06R	07L	07R	24L	24R	25L	25R
A20N	0.05	0.41	0.00	0.09	0.25	7.79	17.70	0.12
A21N	0.10	2.09	0.00	0.16	0.89	20.14	45.28	0.34
A306	0.00	0.00	0.00	0.00	0.00	0.00	0.12	0.00
A319	0.02	0.00	0.00	0.03	0.20	7.42	7.77	0.10
A320	0.04	0.28	0.00	0.10	0.46	13.38	17.91	0.09
A321	0.09	1.42	0.01	0.24	0.59	18.08	45.08	0.37
A332	0.00	0.68	0.00	0.02	0.03	2.57	2.62	0.07
A333	0.00	0.17	0.00	0.01	0.01	0.67	1.60	0.02
A345	0.00	0.00	0.00	0.00	0.00	0.00	0.01	0.00
A359	0.05	0.84	0.00	0.02	0.28	7.59	4.86	0.09
A35K	0.00	0.00	0.00	0.00	0.08	1.43	0.68	0.00
A388	0.01	0.01	0.00	0.00	0.27	6.26	0.49	0.00
ASTR	0.00	0.00	0.00	0.00	0.00	0.01	0.02	0.00
B350	0.01	0.00	0.00	0.01	0.09	0.99	0.51	0.00
B38M	0.11	0.95	0.00	0.13	0.96	24.16	19.89	0.23
B39M	0.05	0.90	0.01	0.13	0.36	9.39	23.35	0.22
B733	0.00	0.01	0.00	0.00	0.00	0.02	0.02	0.00
B734	0.00	0.01	0.00	0.00	0.00	0.01	0.00	0.00
B737	0.12	0.43	0.01	0.02	0.67	21.03	8.35	0.11
B738	0.16	0.89	0.00	0.21	1.32	34.98	41.25	0.36
B739	0.11	0.18	0.02	0.15	0.78	22.95	23.85	0.18
B744	0.00	0.79	0.02	0.10	0.04	0.38	7.29	0.13
B748	0.00	0.71	0.00	0.04	0.15	1.74	3.89	0.00
B752	0.07	0.53	0.00	0.04	0.18	5.73	10.75	0.13
B753	0.00	0.08	0.00	0.03	0.03	2.22	4.60	0.02
B762	0.00	0.00	0.00	0.00	0.00	0.00	0.10	0.00
B763	0.03	3.05	0.17	0.13	0.25	6.53	16.89	0.79
B764	0.02	0.00	0.00	0.00	0.01	1.32	1.02	0.02
B772	0.00	0.40	0.00	0.02	0.04	2.04	4.53	0.17
B77L	0.00	1.22	0.00	0.09	0.04	0.42	10.70	0.20
B77W	0.05	0.50	0.00	0.03	0.61	14.33	6.37	0.10
B788	0.02	0.57	0.00	0.02	0.13	3.63	3.05	0.03
B789	0.01	1.22	0.00	0.04	0.49	10.38	8.12	0.11
B78X	0.01	0.01	0.00	0.00	0.08	1.82	2.74	0.03
BCS1	0.00	0.00	0.00	0.00	0.00	0.01	0.01	0.00
BCS3	0.00	0.01	0.00	0.00	0.01	0.66	1.48	0.00
BE20	0.00	0.00	0.00	0.00	0.00	0.07	0.07	0.00
BE30	0.00	0.00	0.00	0.00	0.00	0.00	0.01	0.00
BE36	0.00	0.00	0.00	0.00	0.00	0.01	0.02	0.00
BE40	0.00	0.00	0.00	0.00	0.00	0.03	0.21	0.00

Departures (Average Daily Operations)								
Aircraft Type	06L	06R	07L	07R	24L	24R	25L	25R
A20N	0.00	0.02	0.09	0.00	6.58	0.53	0.12	19.14
A21N	0.00	0.03	0.16	0.00	18.09	1.70	0.20	48.82
A306	0.00	0.00	0.00	0.00	0.00	0.00	0.09	0.03
A319	0.00	0.01	0.04	0.00	7.87	0.51	0.02	7.11
A320	0.00	0.02	0.13	0.01	10.49	0.97	0.14	20.64
A321	0.00	0.01	0.18	0.01	11.01	1.03	0.14	53.52
A332	0.00	0.02	0.02	0.00	2.99	0.28	0.21	2.47
A333	0.00	0.00	0.01	0.00	0.39	0.02	0.40	1.66
A345	0.00	0.00	0.00	0.00	0.00	0.00	0.01	0.00
A359	0.00	0.01	0.08	0.00	5.76	0.08	0.04	7.86
A35K	0.00	0.00	0.02	0.00	0.92	0.02	0.00	1.22
A388	0.00	0.02	0.00	0.03	5.78	0.00	1.21	0.00
ASTR	0.00	0.00	0.00	0.00	0.00	0.00	0.00	0.04
B350	0.00	0.01	0.00	0.00	0.16	0.11	0.33	1.01
B38M	0.00	0.05	0.11	0.00	23.60	2.00	0.11	20.52
B39M	0.00	0.02	0.12	0.01	5.10	0.42	0.16	28.55
B733	0.00	0.00	0.00	0.00	0.00	0.00	0.01	0.04
B734	0.00	0.00	0.00	0.00	0.00	0.00	0.01	0.01
B737	0.00	0.01	0.05	0.00	23.02	2.23	0.17	5.29
B738	0.00	0.10	0.13	0.01	33.58	2.92	0.45	41.91
B739	0.00	0.03	0.15	0.00	18.01	1.97	0.08	28.01
B744	0.00	0.02	0.02	0.00	0.03	0.00	2.30	6.38
B748	0.00	0.01	0.00	0.01	1.57	0.00	4.77	0.18
B752	0.00	0.00	0.04	0.00	6.83	0.48	0.21	9.95
B753	0.00	0.00	0.02	0.00	1.30	0.13	0.03	5.52
B762	0.00	0.00	0.00	0.00	0.01	0.00	0.03	0.05
B763	0.00	0.01	0.14	0.00	8.59	0.62	3.70	14.85
B764	0.00	0.00	0.00	0.00	1.86	0.14	0.00	0.36
B772	0.00	0.00	0.04	0.00	0.87	0.08	0.13	6.15
B77L	0.00	0.02	0.00	0.00	0.03	0.00	4.33	8.27
B77W	0.00	0.00	0.13	0.00	5.66	0.04	0.09	16.15
B788	0.00	0.00	0.04	0.00	2.02	0.11	0.02	5.24
B789	0.00	0.01	0.07	0.00	5.23	0.08	0.03	14.99
B78X	0.00	0.00	0.02	0.00	0.60	0.05	0.03	4.08
BCS1	0.00	0.00	0.00	0.00	0.01	0.00	0.00	0.01
BCS3	0.00	0.00	0.00	0.00	0.60	0.00	0.00	1.57
BE20	0.00	0.00	0.00	0.00	0.01	0.02	0.01	0.09
BE36	0.00	0.00	0.00	0.00	0.00	0.00	0.01	0.02
BE40	0.00	0.00	0.00	0.00	0.00	0.00	0.09	0.15
BE9L	0.00	0.00	0.00	0.00	0.00	0.00	0.00	0.03

LAX Noise Management

Source: LAX ANOMS, based on available FAA radar flight track data.

note: Aircraft Type for certain military operations may not be available through our data source, therefore will not be included in the report.

## LAX Average Daily Runway Use By Aircraft Type - 24 Hours Fourth Quarter 2024

Arrivals (Average Daily Operations)								
Aircraft Type	06L	06R	07L	07R	24L	24R	25L	25R
BE9L	0.00	0.00	0.00	0.00	0.00	0.01	0.01	0.01
C152	0.00	0.00	0.00	0.00	0.00	0.03	0.05	0.00
C172	0.00	0.01	0.00	0.00	0.00	0.01	0.03	0.00
C182	0.00	0.03	0.00	0.01	0.00	0.14	0.67	0.02
C208	0.00	0.00	0.00	0.01	0.00	0.00	0.75	0.03
C25A	0.00	0.00	0.00	0.00	0.00	0.09	0.12	0.00
C25B	0.00	0.02	0.00	0.00	0.03	0.24	0.57	0.00
C25C	0.00	0.00	0.00	0.00	0.00	0.00	0.05	0.00
C510	0.00	0.00	0.00	0.00	0.00	0.01	0.01	0.00
C525	0.00	0.00	0.00	0.00	0.00	0.08	0.08	0.00
C550	0.00	0.00	0.00	0.00	0.00	0.01	0.02	0.00
C560	0.00	0.00	0.00	0.00	0.00	0.02	0.03	0.00
C56X	0.00	0.00	0.00	0.00	0.01	0.20	0.76	0.00
C650	0.00	0.00	0.00	0.00	0.00	0.01	0.02	0.00
C680	0.00	0.00	0.00	0.00	0.00	0.10	0.37	0.00
C68A	0.00	0.00	0.00	0.01	0.02	0.68	1.89	0.01
C700	0.00	0.01	0.00	0.00	0.03	0.26	0.78	0.00
C750	0.00	0.01	0.00	0.00	0.00	0.08	0.51	0.00
CL30	0.00	0.02	0.00	0.00	0.01	0.54	1.49	0.00
CL35	0.00	0.01	0.00	0.00	0.03	0.66	2.20	0.01
CL60	0.00	0.01	0.00	0.01	0.03	0.25	1.53	0.02
CRJ2	0.00	0.03	0.00	0.02	0.07	0.65	1.67	0.00
CRJ7	0.02	0.05	0.00	0.02	0.21	6.28	6.28	0.08
CRJ9	0.00	0.00	0.00	0.00	0.05	0.72	0.02	0.00
E135	0.00	0.00	0.00	0.00	0.01	0.34	1.12	0.00
E145	0.00	0.00	0.00	0.00	0.00	0.05	0.80	0.00
E170	0.01	0.00	0.00	0.04	0.20	5.20	9.57	0.05
E190	0.00	0.00	0.00	0.00	0.00	0.03	0.15	0.00
E35L	0.00	0.00	0.00	0.00	0.00	0.03	0.16	0.00
E50P	0.00	0.00	0.00	0.00	0.01	0.04	0.11	0.00
E545	0.00	0.00	0.00	0.00	0.02	0.21	0.80	0.00
E550	0.00	0.01	0.00	0.00	0.00	0.08	0.57	0.01
E55P	0.00	0.00	0.00	0.00	0.04	0.48	1.42	0.00
E75L	0.24	0.14	0.00	0.12	2.40	60.51	24.57	0.16
E75S	0.00	0.00	0.00	0.00	0.08	0.79	0.42	0.00
F2TH	0.00	0.00	0.00	0.00	0.01	0.15	0.70	0.00
F900	0.00	0.00	0.00	0.00	0.00	0.12	0.36	0.00
FA50	0.00	0.01	0.00	0.00	0.00	0.02	0.03	0.00
FA7X	0.00	0.00	0.00	0.00	0.00	0.08	0.32	0.00
FA8X	0.00	0.00	0.00	0.00	0.00	0.00	0.03	0.01

Departures (Average Daily Operations)								
Aircraft Type	06L	06R	07L	07R	24L	24R	25L	25R
C152	0.00	0.00	0.00	0.00	0.00	0.00	0.00	0.09
C17	0.00	0.00	0.00	0.00	0.01	0.00	0.00	0.00
C172	0.00	0.00	0.00	0.00	0.00	0.00	0.01	0.04
C182	0.00	0.00	0.01	0.00	0.00	0.00	0.02	0.84
C208	0.00	0.00	0.01	0.00	0.00	0.00	0.01	0.77
C25A	0.00	0.00	0.00	0.00	0.00	0.00	0.02	0.20
C25B	0.00	0.01	0.00	0.00	0.02	0.00	0.16	0.64
C25C	0.00	0.00	0.00	0.00	0.00	0.00	0.02	0.04
C510	0.00	0.00	0.00	0.00	0.00	0.00	0.00	0.02
C525	0.00	0.00	0.00	0.00	0.00	0.01	0.03	0.11
C550	0.00	0.00	0.00	0.00	0.00	0.00	0.00	0.03
C560	0.00	0.00	0.00	0.00	0.01	0.00	0.01	0.02
C56X	0.00	0.00	0.00	0.00	0.01	0.01	0.36	0.59
C650	0.00	0.00	0.00	0.00	0.00	0.00	0.00	0.03
C680	0.00	0.00	0.00	0.00	0.01	0.00	0.13	0.32
C68A	0.00	0.00	0.00	0.00	0.08	0.03	0.98	1.54
C700	0.00	0.00	0.00	0.00	0.04	0.00	0.39	0.64
C750	0.00	0.00	0.00	0.00	0.03	0.00	0.14	0.42
CL30	0.00	0.00	0.00	0.00	0.08	0.01	0.72	1.24
CL35	0.00	0.00	0.01	0.00	0.14	0.03	1.11	1.61
CL60	0.00	0.01	0.00	0.00	0.07	0.00	0.72	1.07
CRJ2	0.00	0.00	0.01	0.00	0.05	0.00	0.15	2.22
CRJ7	0.00	0.03	0.02	0.00	4.05	0.39	0.02	8.40
CRJ9	0.00	0.00	0.00	0.00	0.27	0.02	0.00	0.50
E135	0.00	0.00	0.00	0.00	0.00	0.00	0.42	1.04
E145	0.00	0.00	0.00	0.00	0.00	0.00	0.35	0.50
E170	0.00	0.01	0.04	0.00	1.39	0.21	0.03	13.45
E190	0.00	0.00	0.00	0.00	0.00	0.00	0.07	0.11
E35L	0.00	0.00	0.00	0.00	0.00	0.00	0.05	0.14
E50P	0.00	0.00	0.00	0.00	0.01	0.01	0.01	0.13
E545	0.00	0.00	0.00	0.00	0.05	0.00	0.47	0.51
E550	0.00	0.00	0.00	0.00	0.00	0.00	0.21	0.47
E55P	0.00	0.00	0.02	0.00	0.09	0.02	0.64	1.14
E75L	0.00	0.26	0.16	0.00	41.01	4.28	0.00	42.40
E75S	0.00	0.00	0.00	0.00	1.15	0.01	0.00	0.13
F2TH	0.00	0.00	0.00	0.00	0.03	0.01	0.32	0.49
F900	0.00	0.00	0.00	0.00	0.02	0.00	0.17	0.27
FA50	0.00	0.00	0.00	0.00	0.00	0.00	0.01	0.08
FA7X	0.00	0.00	0.00	0.00	0.01	0.00	0.14	0.22
FA8X	0.00	0.00	0.00	0.00	0.00	0.00	0.01	0.03

LAX Noise Management

Source: LAX ANOMS, based on available FAA radar flight track data.

note: Aircraft Type for certain military operations may not be available through our data source, therefore will not be included in the report.

## LAX Average Daily Runway Use By Aircraft Type - 24 Hours Fourth Quarter 2024

Arrivals (Average Daily Operations)								
Aircraft Type	06L	06R	07L	07R	24L	24R	25L	25R
G150	0.00	0.00	0.00	0.00	0.00	0.05	0.07	0.00
G280	0.00	0.00	0.00	0.01	0.02	0.09	0.52	0.01
GA5C	0.00	0.00	0.00	0.00	0.00	0.07	0.21	0.00
GA6C	0.00	0.00	0.00	0.00	0.00	0.08	0.34	0.00
GALX	0.00	0.01	0.00	0.00	0.00	0.05	0.34	0.00
GL5T	0.00	0.01	0.00	0.00	0.00	0.15	0.43	0.00
GL7T	0.00	0.01	0.01	0.01	0.03	0.29	0.93	0.01
GLEX	0.00	0.01	0.00	0.00	0.01	0.47	1.39	0.01
GLF4	0.00	0.03	0.00	0.01	0.04	0.33	1.63	0.01
GLF5	0.00	0.03	0.00	0.00	0.01	0.48	1.61	0.02
GLF6	0.00	0.05	0.01	0.00	0.05	0.57	1.65	0.00
H25B	0.00	0.04	0.02	0.00	0.01	0.18	0.92	0.02
H25C	0.00	0.00	0.00	0.00	0.00	0.00	0.03	0.00
HA4T	0.00	0.00	0.00	0.00	0.00	0.00	0.01	0.00
HDJT	0.00	0.00	0.00	0.00	0.00	0.03	0.08	0.00
J328	0.00	0.00	0.00	0.00	0.00	0.01	0.01	0.00
LJ35	0.00	0.00	0.00	0.00	0.00	0.00	0.09	0.00
LJ40	0.00	0.00	0.00	0.00	0.00	0.00	0.01	0.00
LJ45	0.00	0.00	0.00	0.00	0.00	0.03	0.30	0.01
LJ60	0.00	0.00	0.00	0.00	0.00	0.09	0.32	0.00
LJ75	0.00	0.00	0.00	0.00	0.01	0.04	0.10	0.00
M600	0.00	0.00	0.00	0.00	0.00	0.00	0.01	0.00
MD11	0.01	0.22	0.01	0.02	0.00	0.02	1.05	0.07
P180	0.00	0.01	0.00	0.00	0.01	0.02	0.08	0.01
P28A	0.00	0.00	0.00	0.00	0.00	0.00	0.02	0.00
PA46	0.00	0.00	0.00	0.00	0.00	0.00	0.01	0.00
PC12	0.00	0.01	0.00	0.00	0.00	0.10	0.74	0.04
PC24	0.00	0.00	0.00	0.00	0.00	0.01	0.04	0.00
PRM1	0.00	0.00	0.00	0.00	0.00	0.02	0.08	0.00
S22T	0.00	0.00	0.00	0.00	0.00	0.00	0.01	0.00
SR20	0.00	0.00	0.00	0.00	0.00	0.01	0.00	0.00
SR22	0.00	0.01	0.00	0.00	0.00	0.00	0.01	0.00
GLF3	0.00	0.00	0.00	0.00	0.00	0.01	0.07	0.00
LJ55	0.00	0.00	0.00	0.00	0.00	0.00	0.02	0.00
TBM7	0.00	0.00	0.00	0.00	0.00	0.02	0.03	0.00
MD83	0.00	0.00	0.00	0.00	0.00	0.01	0.00	0.00
BE35	0.00	0.00	0.00	0.00	0.00	0.00	0.01	0.00
A339	0.00	0.00	0.00	0.00	0.01	0.61	0.47	0.00
SF34	0.00	0.00	0.00	0.00	0.00	0.01	0.02	0.00
T210	0.00	0.00	0.00	0.00	0.00	0.00	0.01	0.00

Departures (Average Daily Operations)								
Aircraft Type	06L	06R	07L	07R	24L	24R	25L	25R
G150	0.00	0.00	0.00	0.00	0.02	0.00	0.05	0.04
G280	0.00	0.00	0.01	0.00	0.00	0.01	0.23	0.38
GA5C	0.00	0.00	0.00	0.00	0.00	0.00	0.07	0.21
GA6C	0.00	0.00	0.00	0.00	0.00	0.01	0.11	0.26
GALX	0.00	0.00	0.00	0.00	0.01	0.00	0.10	0.29
GL5T	0.00	0.00	0.00	0.00	0.02	0.02	0.16	0.36
GL7T	0.00	0.00	0.00	0.00	0.00	0.01	0.37	0.88
GLEX	0.00	0.00	0.00	0.00	0.07	0.00	0.57	1.32
GLF4	0.00	0.00	0.00	0.00	0.05	0.01	0.72	1.27
GLF5	0.00	0.00	0.01	0.00	0.03	0.01	0.77	1.33
GLF6	0.00	0.00	0.00	0.00	0.09	0.01	0.70	1.51
H25B	0.00	0.00	0.02	0.00	0.04	0.00	0.45	0.68
H25C	0.00	0.00	0.00	0.00	0.00	0.00	0.01	0.02
HA4T	0.00	0.00	0.00	0.00	0.00	0.00	0.00	0.01
HDJT	0.00	0.00	0.00	0.00	0.00	0.00	0.02	0.09
J328	0.00	0.00	0.00	0.00	0.01	0.00	0.00	0.01
LJ31	0.00	0.00	0.00	0.00	0.00	0.00	0.00	0.01
LJ35	0.00	0.00	0.00	0.00	0.00	0.00	0.03	0.05
LJ40	0.00	0.00	0.00	0.00	0.00	0.00	0.01	0.00
LJ45	0.00	0.00	0.00	0.00	0.00	0.00	0.12	0.22
LJ60	0.00	0.01	0.00	0.00	0.01	0.00	0.13	0.25
LJ75	0.00	0.00	0.00	0.00	0.00	0.01	0.04	0.11
M600	0.00	0.00	0.00	0.00	0.00	0.00	0.00	0.01
MD11	0.00	0.00	0.00	0.00	0.00	0.00	0.52	0.89
P180	0.00	0.00	0.00	0.00	0.00	0.00	0.03	0.10
P28A	0.00	0.00	0.00	0.00	0.00	0.00	0.00	0.02
PA46	0.00	0.00	0.00	0.00	0.00	0.00	0.00	0.01
PC12	0.00	0.00	0.01	0.00	0.03	0.00	0.05	0.79
PC24	0.00	0.00	0.00	0.00	0.00	0.00	0.01	0.04
PRM1	0.00	0.00	0.00	0.00	0.00	0.00	0.02	0.08
S22T	0.00	0.00	0.00	0.00	0.00	0.00	0.00	0.01
SR20	0.00	0.00	0.00	0.00	0.00	0.00	0.00	0.01
SR22	0.00	0.00	0.00	0.00	0.00	0.00	0.01	0.01
GLF3	0.00	0.00	0.00	0.00	0.02	0.00	0.02	0.03
LJ55	0.00	0.00	0.00	0.00	0.00	0.00	0.02	0.00
TBM7	0.00	0.00	0.00	0.00	0.01	0.00	0.01	0.03
MD83	0.00	0.00	0.00	0.00	0.00	0.00	0.01	0.00
BE35	0.00	0.00	0.00	0.00	0.01	0.00	0.00	0.00
A339	0.00	0.00	0.01	0.00	0.46	0.01	0.04	0.58
SF34	0.00	0.00	0.00	0.00	0.00	0.01	0.00	0.00

LAX Noise Management

Source: LAX ANOMS, based on available FAA radar flight track data.

note: Aircraft Type for certain military operations may not be available through our data source, therefore will not be included in the report.

## LAX Average Daily Runway Use By Aircraft Type - 24 Hours Fourth Quarter 2024

Arrivals (Average Daily Operations)								
Aircraft Type	06L	06R	07L	07R	24L	24R	25L	25R
C340	0.00	0.00	0.00	0.00	0.00	0.00	0.01	0.00
M20P	0.00	0.00	0.00	0.00	0.00	0.02	0.01	0.00
A318	0.00	0.00	0.00	0.00	0.00	0.00	0.01	0.00
GA7C	0.00	0.00	0.00	0.00	0.00	0.04	0.14	0.00

Departures (Average Daily Operations)								
Aircraft Type	06L	06R	07L	07R	24L	24R	25L	25R
T210	0.00	0.00	0.00	0.00	0.00	0.00	0.01	0.00
C340	0.00	0.00	0.00	0.00	0.00	0.00	0.00	0.01

LAX Noise Management

Source: LAX ANOMS, based on available FAA radar flight track data.

note: Aircraft Type for certain military operations may not be available through our data source, therefore will not be included in the report.

**LAX Average Daily Runway Use By Aircraft Type - Night Time (10pm - 7am)**  
**Fourth Quarter 2024**

Arrivals (Average Daily Operations)								
Aircraft Type	06L	06R	07L	07R	24L	24R	25L	25R
A20N	0.00	0.41	0.00	0.03	0.03	0.82	3.23	0.08
A21N	0.02	2.09	0.00	0.07	0.25	4.61	9.46	0.11
A319	0.00	0.00	0.00	0.00	0.00	0.45	0.47	0.02
A320	0.01	0.28	0.00	0.05	0.04	1.28	4.71	0.00
A321	0.04	1.42	0.00	0.09	0.14	3.76	7.64	0.05
A332	0.00	0.68	0.00	0.00	0.01	0.21	0.58	0.07
A333	0.00	0.17	0.00	0.00	0.00	0.01	0.24	0.02
A359	0.00	0.84	0.00	0.00	0.01	0.40	0.84	0.07
A35K	0.00	0.00	0.00	0.00	0.00	0.00	0.01	0.00
A388	0.00	0.01	0.00	0.00	0.00	0.02	0.01	0.00
ASTR	0.00	0.00	0.00	0.00	0.00	0.00	0.01	0.00
B350	0.00	0.00	0.00	0.00	0.01	0.05	0.12	0.00
B38M	0.03	0.95	0.00	0.02	0.17	3.37	3.02	0.08
B39M	0.01	0.90	0.01	0.04	0.04	1.18	4.58	0.07
B737	0.01	0.43	0.01	0.00	0.10	3.41	0.92	0.02
B738	0.01	0.89	0.00	0.04	0.11	3.40	4.65	0.08
B739	0.03	0.18	0.01	0.01	0.12	2.73	3.03	0.01
B744	0.00	0.79	0.02	0.05	0.02	0.02	1.86	0.13
B748	0.00	0.71	0.00	0.03	0.08	0.11	0.96	0.00
B752	0.01	0.53	0.00	0.03	0.09	1.09	1.70	0.04
B753	0.00	0.08	0.00	0.01	0.00	0.10	0.28	0.00
B762	0.00	0.00	0.00	0.00	0.00	0.00	0.01	0.00
B763	0.01	3.05	0.17	0.04	0.07	1.07	4.97	0.73
B764	0.00	0.00	0.00	0.00	0.00	0.11	0.05	0.00
B772	0.00	0.40	0.00	0.00	0.00	0.10	0.66	0.09
B77L	0.00	1.22	0.00	0.07	0.02	0.26	3.55	0.16
B77W	0.00	0.50	0.00	0.00	0.02	0.62	0.61	0.05
B788	0.00	0.57	0.00	0.00	0.01	0.45	0.83	0.01
B789	0.00	1.22	0.00	0.01	0.03	0.70	2.10	0.09
B78X	0.00	0.01	0.00	0.00	0.00	0.04	0.20	0.00
BCS1	0.00	0.00	0.00	0.00	0.00	0.00	0.01	0.00
BCS3	0.00	0.01	0.00	0.00	0.00	0.10	0.01	0.00
BE30	0.00	0.00	0.00	0.00	0.00	0.00	0.01	0.00
BE40	0.00	0.00	0.00	0.00	0.00	0.00	0.02	0.00
BE9L	0.00	0.00	0.00	0.00	0.00	0.00	0.00	0.01
C152	0.00	0.00	0.00	0.00	0.00	0.00	0.02	0.00
C172	0.00	0.01	0.00	0.00	0.00	0.00	0.00	0.00
C182	0.00	0.03	0.00	0.00	0.00	0.01	0.10	0.00
C25B	0.00	0.02	0.00	0.00	0.00	0.01	0.04	0.00
C56X	0.00	0.00	0.00	0.00	0.00	0.01	0.01	0.00

Departures (Average Daily Operations)								
Aircraft Type	06L	06R	07L	07R	24L	24R	25L	25R
A20N	0.00	0.00	0.07	0.00	0.88	0.05	0.07	6.09
A21N	0.00	0.00	0.08	0.00	2.63	0.17	0.13	14.04
A306	0.00	0.00	0.00	0.00	0.00	0.00	0.00	0.01
A319	0.00	0.00	0.01	0.00	0.20	0.01	0.00	1.10
A320	0.00	0.00	0.04	0.01	1.24	0.14	0.08	6.00
A321	0.00	0.00	0.13	0.01	3.95	0.32	0.11	16.08
A332	0.00	0.00	0.00	0.00	0.10	0.01	0.00	0.59
A333	0.00	0.00	0.00	0.00	0.01	0.00	0.02	0.46
A359	0.00	0.00	0.05	0.00	1.68	0.00	0.03	4.59
A35K	0.00	0.00	0.00	0.00	0.16	0.00	0.00	0.04
A388	0.00	0.00	0.00	0.01	1.47	0.00	0.62	0.00
ASTR	0.00	0.00	0.00	0.00	0.00	0.00	0.00	0.02
B350	0.00	0.00	0.00	0.00	0.04	0.03	0.00	0.43
B38M	0.00	0.01	0.04	0.00	2.20	0.21	0.11	6.30
B39M	0.00	0.00	0.05	0.01	0.63	0.01	0.13	7.36
B737	0.00	0.00	0.00	0.00	3.34	0.32	0.05	3.09
B738	0.00	0.00	0.04	0.01	3.39	0.23	0.13	8.97
B739	0.00	0.00	0.02	0.00	1.11	0.11	0.02	4.20
B744	0.00	0.01	0.00	0.00	0.01	0.00	0.12	3.79
B748	0.00	0.01	0.00	0.01	0.65	0.00	1.64	0.18
B752	0.00	0.00	0.02	0.00	1.58	0.10	0.05	2.48
B753	0.00	0.00	0.01	0.00	0.00	0.00	0.01	0.91
B762	0.00	0.00	0.00	0.00	0.00	0.00	0.00	0.02
B763	0.00	0.01	0.03	0.00	1.16	0.08	0.40	8.75
B764	0.00	0.00	0.00	0.00	0.08	0.01	0.00	0.10
B772	0.00	0.00	0.02	0.00	0.00	0.00	0.02	1.48
B77L	0.00	0.00	0.00	0.00	0.01	0.00	0.27	4.75
B77W	0.00	0.00	0.10	0.00	0.58	0.00	0.04	7.15
B788	0.00	0.00	0.04	0.00	0.12	0.00	0.02	2.50
B789	0.00	0.01	0.03	0.00	1.08	0.02	0.02	3.68
B78X	0.00	0.00	0.01	0.00	0.00	0.00	0.01	1.03
BCS3	0.00	0.00	0.00	0.00	0.00	0.00	0.00	0.03
BE40	0.00	0.00	0.00	0.00	0.00	0.00	0.00	0.02
BE9L	0.00	0.00	0.00	0.00	0.00	0.00	0.00	0.01
C152	0.00	0.00	0.00	0.00	0.00	0.00	0.00	0.03
C172	0.00	0.00	0.00	0.00	0.00	0.00	0.00	0.01
C182	0.00	0.00	0.00	0.00	0.00	0.00	0.00	0.05
C208	0.00	0.00	0.00	0.00	0.00	0.00	0.00	0.04
C25B	0.00	0.00	0.00	0.00	0.00	0.00	0.00	0.08
C525	0.00	0.00	0.00	0.00	0.00	0.00	0.00	0.02

LAX Noise Management

Source: LAX ANOMS, based on available FAA radar flight track data.

note: Aircraft Type for certain military operations may not be available through our data source, therefore will not be included in the report.

**LAX Average Daily Runway Use By Aircraft Type - Night Time (10pm - 7am)**  
**Fourth Quarter 2024**

Arrivals (Average Daily Operations)								
Aircraft Type	06L	06R	07L	07R	24L	24R	25L	25R
C680	0.00	0.00	0.00	0.00	0.00	0.00	0.01	0.00
C68A	0.00	0.00	0.00	0.00	0.00	0.02	0.05	0.00
C700	0.00	0.01	0.00	0.00	0.00	0.02	0.04	0.00
C750	0.00	0.01	0.00	0.00	0.00	0.00	0.02	0.00
CL30	0.00	0.02	0.00	0.00	0.00	0.01	0.09	0.00
CL35	0.00	0.01	0.00	0.00	0.00	0.01	0.07	0.00
CL60	0.00	0.01	0.00	0.00	0.00	0.01	0.12	0.01
CRJ2	0.00	0.03	0.00	0.01	0.00	0.00	0.08	0.00
CRJ7	0.00	0.05	0.00	0.00	0.00	0.18	0.18	0.00
E135	0.00	0.00	0.00	0.00	0.00	0.01	0.02	0.00
E145	0.00	0.00	0.00	0.00	0.00	0.00	0.01	0.00
E170	0.00	0.00	0.00	0.00	0.01	0.33	0.80	0.00
E545	0.00	0.00	0.00	0.00	0.00	0.01	0.01	0.00
E550	0.00	0.01	0.00	0.00	0.00	0.00	0.00	0.00
E55P	0.00	0.00	0.00	0.00	0.00	0.00	0.07	0.00
E75L	0.00	0.14	0.00	0.02	0.10	2.18	1.36	0.00
E75S	0.00	0.00	0.00	0.00	0.00	0.01	0.02	0.00
FA7X	0.00	0.00	0.00	0.00	0.00	0.00	0.01	0.00
FA8X	0.00	0.00	0.00	0.00	0.00	0.00	0.00	0.01
G150	0.00	0.00	0.00	0.00	0.00	0.00	0.01	0.00
G280	0.00	0.00	0.00	0.00	0.00	0.00	0.02	0.00
GA5C	0.00	0.00	0.00	0.00	0.00	0.00	0.01	0.00
GA6C	0.00	0.00	0.00	0.00	0.00	0.00	0.03	0.00
GALX	0.00	0.01	0.00	0.00	0.00	0.00	0.05	0.00
GL5T	0.00	0.01	0.00	0.00	0.00	0.00	0.00	0.00
GL7T	0.00	0.01	0.01	0.00	0.00	0.04	0.09	0.00
GLEX	0.00	0.01	0.00	0.00	0.00	0.01	0.14	0.00
GLF4	0.00	0.03	0.00	0.01	0.00	0.00	0.13	0.00
GLF5	0.00	0.03	0.00	0.00	0.00	0.04	0.11	0.02
GLF6	0.00	0.05	0.01	0.00	0.01	0.03	0.11	0.00
H25B	0.00	0.04	0.02	0.00	0.00	0.01	0.04	0.01
LJ35	0.00	0.00	0.00	0.00	0.00	0.00	0.02	0.00
LJ45	0.00	0.00	0.00	0.00	0.00	0.00	0.02	0.00
LJ60	0.00	0.00	0.00	0.00	0.00	0.00	0.01	0.00
LJ75	0.00	0.00	0.00	0.00	0.00	0.00	0.02	0.00
M600	0.00	0.00	0.00	0.00	0.00	0.00	0.01	0.00
MD11	0.01	0.22	0.01	0.02	0.00	0.02	0.36	0.07
PC12	0.00	0.01	0.00	0.00	0.00	0.02	0.01	0.00
SR22	0.00	0.01	0.00	0.00	0.00	0.00	0.00	0.00
B734	0.00	0.01	0.00	0.00	0.00	0.00	0.00	0.00
FA50	0.00	0.01	0.00	0.00	0.00	0.00	0.00	0.00

Departures (Average Daily Operations)								
Aircraft Type	06L	06R	07L	07R	24L	24R	25L	25R
C56X	0.00	0.00	0.00	0.00	0.00	0.00	0.00	0.04
C680	0.00	0.00	0.00	0.00	0.00	0.00	0.00	0.02
C68A	0.00	0.00	0.00	0.00	0.00	0.00	0.01	0.14
C700	0.00	0.00	0.00	0.00	0.00	0.00	0.00	0.08
C750	0.00	0.00	0.00	0.00	0.01	0.00	0.00	0.07
CL30	0.00	0.00	0.00	0.00	0.00	0.00	0.01	0.14
CL35	0.00	0.00	0.00	0.00	0.00	0.00	0.00	0.12
CL60	0.00	0.00	0.00	0.00	0.00	0.00	0.01	0.17
CRJ2	0.00	0.00	0.00	0.00	0.00	0.00	0.01	0.15
CRJ7	0.00	0.01	0.00	0.00	0.22	0.03	0.00	0.87
E135	0.00	0.00	0.00	0.00	0.00	0.00	0.00	0.04
E145	0.00	0.00	0.00	0.00	0.00	0.00	0.01	0.02
E170	0.00	0.00	0.00	0.00	0.05	0.01	0.00	0.51
E190	0.00	0.00	0.00	0.00	0.00	0.00	0.00	0.01
E35L	0.00	0.00	0.00	0.00	0.00	0.00	0.00	0.03
E545	0.00	0.00	0.00	0.00	0.00	0.00	0.00	0.07
E550	0.00	0.00	0.00	0.00	0.00	0.00	0.00	0.02
E55P	0.00	0.00	0.00	0.00	0.00	0.00	0.00	0.13
E75L	0.00	0.00	0.02	0.00	2.15	0.26	0.00	4.01
E75S	0.00	0.00	0.00	0.00	0.10	0.00	0.00	0.00
F2TH	0.00	0.00	0.00	0.00	0.00	0.00	0.00	0.03
FA7X	0.00	0.00	0.00	0.00	0.00	0.00	0.00	0.01
G280	0.00	0.00	0.00	0.00	0.00	0.00	0.00	0.05
GA5C	0.00	0.00	0.00	0.00	0.00	0.00	0.00	0.03
GA6C	0.00	0.00	0.00	0.00	0.00	0.00	0.00	0.02
GALX	0.00	0.00	0.00	0.00	0.00	0.00	0.00	0.03
GL5T	0.00	0.00	0.00	0.00	0.00	0.00	0.00	0.03
GL7T	0.00	0.00	0.00	0.00	0.00	0.00	0.00	0.17
GLEX	0.00	0.00	0.00	0.00	0.02	0.00	0.01	0.24
GLF4	0.00	0.00	0.00	0.00	0.00	0.00	0.00	0.18
GLF5	0.00	0.00	0.00	0.00	0.01	0.00	0.00	0.23
GLF6	0.00	0.00	0.00	0.00	0.00	0.00	0.01	0.26
H25B	0.00	0.00	0.00	0.00	0.00	0.00	0.00	0.05
LJ35	0.00	0.00	0.00	0.00	0.00	0.00	0.00	0.03
LJ45	0.00	0.00	0.00	0.00	0.00	0.00	0.00	0.01
LJ60	0.00	0.01	0.00	0.00	0.00	0.00	0.00	0.03
LJ75	0.00	0.00	0.00	0.00	0.00	0.00	0.00	0.02
M600	0.00	0.00	0.00	0.00	0.00	0.00	0.00	0.01
MD11	0.00	0.00	0.00	0.00	0.00	0.00	0.00	0.45
PC12	0.00	0.00	0.00	0.00	0.01	0.00	0.01	0.03
SR22	0.00	0.00	0.00	0.00	0.00	0.00	0.00	0.01

LAX Noise Management

Source: LAX ANOMS, based on available FAA radar flight track data.

note: Aircraft Type for certain military operations may not be available through our data source, therefore will not be included in the report.

**LAX Average Daily Runway Use By Aircraft Type - Night Time (10pm - 7am)  
Fourth Quarter 2024**

<b>Arrivals</b> (Average Daily Operations)								
Aircraft Type	06L	06R	07L	07R	24L	24R	25L	25R
E50P	0.00	0.00	0.00	0.00	0.00	0.00	0.02	0.00
B733	0.00	0.01	0.00	0.00	0.00	0.00	0.00	0.00
P180	0.00	0.01	0.00	0.00	0.00	0.00	0.00	0.00

<b>Departures</b> (Average Daily Operations)								
Aircraft Type	06L	06R	07L	07R	24L	24R	25L	25R
FA50	0.00	0.00	0.00	0.00	0.00	0.00	0.00	0.01
PRM1	0.00	0.00	0.00	0.00	0.00	0.00	0.00	0.02
E50P	0.00	0.00	0.00	0.00	0.00	0.00	0.00	0.03
GLF3	0.00	0.00	0.00	0.00	0.00	0.00	0.01	0.00
C650	0.00	0.00	0.00	0.00	0.00	0.00	0.00	0.01

## LAX Average Daily Runway Use By Aircraft Group - 24 Hours Fourth Quarter 2024

Arrivals (Average Daily Operations)								
Aircraft Group	06L	06R	07L	07R	24L	24R	25L	25R
Small Jet	0.27	0.54	0.04	0.26	3.47	82.12	70.97	0.46
Small Narrow-Body Jet	0.68	4.09	0.04	0.86	5.03	142.34	163.11	1.41
Large Narrow-Body Jet	0.25	4.12	0.01	0.48	1.70	46.16	105.71	0.86
Small Wide-Body Jet	0.05	3.05	0.17	0.13	0.26	7.85	18.13	0.82
Large Wide-Body Jet	0.17	7.34	0.03	0.42	2.27	53.89	58.49	1.01
Non-Jet	0.01	0.10	0.00	0.03	0.10	1.55	3.43	0.12
Military*	0.00	0.00	0.00	0.00	0.00	0.00	0.01	0.00

Departures (Average Daily Operations)								
Aircraft Group	06L	06R	07L	07R	24L	24R	25L	25R
Small Jet	0.00	0.34	0.32	0.00	49.02	5.15	12.73	90.38
Small Narrow-Body Jet	0.00	0.27	0.83	0.03	128.86	11.55	1.36	174.82
Large Narrow-Body Jet	0.00	0.04	0.41	0.01	37.23	3.34	0.58	117.80
Small Wide-Body Jet	0.00	0.01	0.14	0.00	10.46	0.76	3.82	15.29
Large Wide-Body Jet	0.00	0.12	0.47	0.04	32.32	0.77	14.15	76.12
Non-Jet	0.00	0.01	0.03	0.00	0.25	0.14	0.53	4.37
Military*	0.00	0.00	0.00	0.00	0.01	0.00	0.01	0.00

LAX Noise Management

Source: LAX ANOMS, based on available FAA radar flight track data.

\* Aircraft Type for certain military operations may not be available through our data source, therefore will not be included in the report.



**LAX Average Daily Runway Use By Aircraft Group - Night Time (10pm - 7am)  
Fourth Quarter 2024**

<b>Arrivals</b> (Average Daily Operations)								
<b>Aircraft Group</b>	<b>06L</b>	<b>06R</b>	<b>07L</b>	<b>07R</b>	<b>24L</b>	<b>24R</b>	<b>25L</b>	<b>25R</b>
Small Jet	0.00	0.54	0.04	0.04	0.12	2.97	3.90	0.05
Small Narrow-Body Jet	0.11	4.09	0.03	0.21	0.62	16.74	24.63	0.35
Large Narrow-Body Jet	0.08	4.12	0.00	0.20	0.48	9.55	19.08	0.21
Small Wide-Body Jet	0.01	3.05	0.17	0.04	0.07	1.17	5.03	0.73
Large Wide-Body Jet	0.01	7.34	0.03	0.18	0.21	2.96	12.79	0.75
Non-Jet	0.00	0.10	0.00	0.00	0.01	0.10	0.33	0.01
Military*	0.00	0.00	0.00	0.00	0.00	0.00	0.00	0.00

<b>Departures</b> (Average Daily Operations)								
<b>Aircraft Group</b>	<b>06L</b>	<b>06R</b>	<b>07L</b>	<b>07R</b>	<b>24L</b>	<b>24R</b>	<b>25L</b>	<b>25R</b>
Small Jet	0.00	0.02	0.02	0.00	2.57	0.30	0.09	8.33
Small Narrow-Body Jet	0.00	0.01	0.28	0.03	12.98	1.08	0.59	43.16
Large Narrow-Body Jet	0.00	0.00	0.24	0.01	8.15	0.59	0.30	33.51
Small Wide-Body Jet	0.00	0.01	0.03	0.00	1.24	0.09	0.40	8.88
Large Wide-Body Jet	0.00	0.03	0.26	0.02	5.87	0.03	2.83	30.72
Non-Jet	0.00	0.00	0.00	0.00	0.05	0.03	0.01	0.78
Military*	0.00	0.00	0.00	0.00	0.00	0.00	0.00	0.00

LAX Noise Management

Source: LAX ANOMS, based on available FAA radar flight track data.

\* Aircraft Type for certain military operations may not be available through our data source, therefore will not be included in the report.

## **Summary of Actions Taken by LAWA to Comply with Conditions to the Current Noise Variance for Los Angeles International Airport**

Fourth Quarter 2024

The Los Angeles World Airports (LAWA) continuously works to operate an airport that maintains the highest possible environmental quality of life for surrounding communities. To that end, LAWA continues to take the following actions:

- LAWA continues to implement its Aircraft Noise Mitigation Program (ANMP), designed to fund the mitigation of all incompatible land uses within the noise impact boundary as defined in the State Noise Standards. LAWA updates the ANMP report periodically to ensure that it reasonably represents the mitigation and funding programs that are in place.
- With each second quarter Quarterly Report, LAWA submits an annual update of the ANMP. This update includes the number of dwellings acoustically insulated, the cost of the program, the anticipated funding availability, and the anticipated completion date of the project.
- LAWA continues to monitor and enforce, as appropriate, all of its informal noise abatement procedures in place at LAX, including but not limited to the early turn program, preferential runway use procedures and over ocean operations procedures, as well as the formal maintenance run-up restrictions.
- LAWA continues to work with the Federal Aviation Administration and pilots to improve compliance with its “no turns before the shoreline” policy.
- LAWA updated the 2014 Report on Implementation of the Preferential Runway Use Policy at LAX to reevaluate conditions related to compliance, implementation, and possible improvements, and submitted it to Caltrans and Los Angeles County on June 29, 2023.
- LAWA continues to provide the information to the County of Los Angeles needed to prepare Quarterly Reports of Noise Monitoring. Included with the noise monitoring information forwarded each quarter is this brief report regarding the implementation of each of the conditions to the Variance.

- LAWA completed an upgrade of the Noise and Operations Monitoring System for LAX in 2022. LAWA received Caltrans certification of the upgraded airport noise and operations monitoring system in October 2022 and provided the County of Los Angeles with a copy of all submitted documentation and Caltrans certification at that time. The County continues to review and audit the data LAWA submits in each Quarterly Report.
- LAWA continues to include tabular data and graphical illustrations with each Quarterly Report describing and comparing the level and type of usage for each runway at LAX during the quarter. In addition, LAWA is including tabular data describing the daily average number of arrivals and departures by aircraft type and model on each runway during all hours and during nighttime hours from 10 pm to 7 am. LAWA is also now providing the runway usage data to the FAA for their use in monitoring air traffic runway usage.
- LAWA continues to monitor and enforce its maintenance run-up curfew (2300-0600). When applicable, LAWA will include with each Quarterly Report, information regarding monitoring and enforcement activities undertaken during the quarter. There were no enforcement actions reported during the fourth quarter 2024.
- LAWA continues to provide the LAX Noise Comment Phone Line with an option for callers to have a live answer as available, and continues to retrieve any complaint messages and provide appropriate responses in a timely manner.