

HARYS FIVE DEPARTURE (RNAV)

AL-552 (FAA)

VAN NUYS (VNY)
VAN NUYS, CALIFORNIA

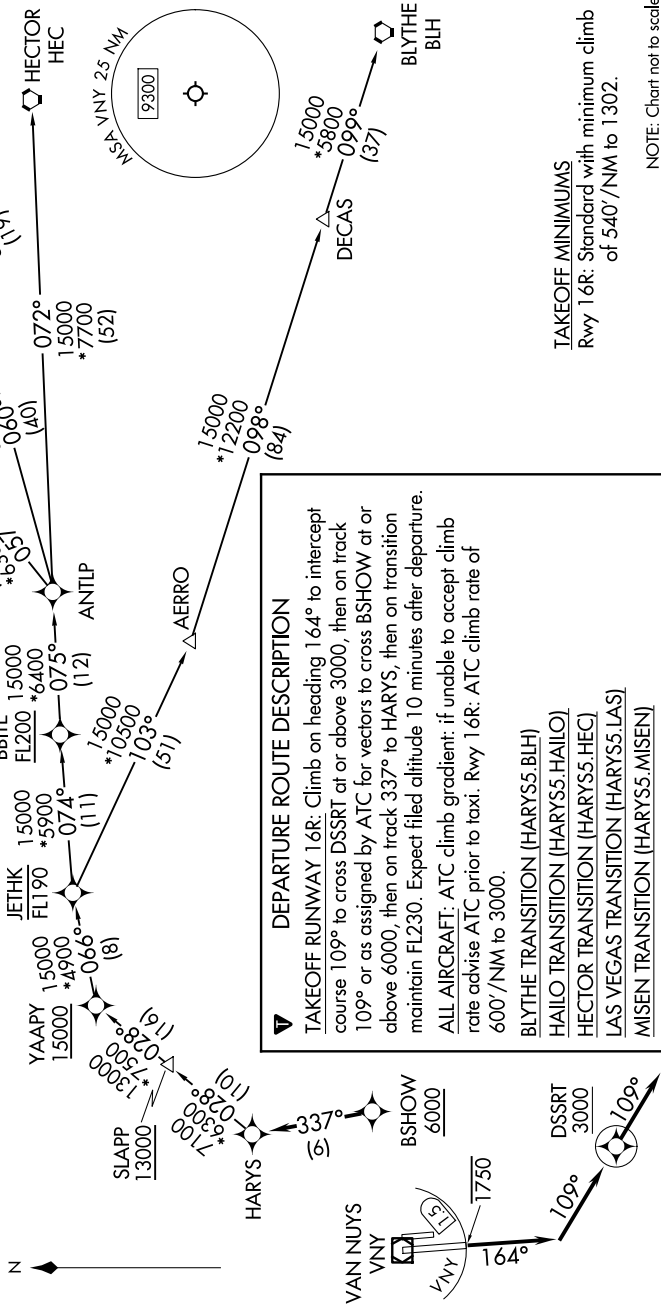
SW-3, 20 FEB 2025 to 20 MAR 2025

SOCAL DEP CON
124.6 298.85
ATIS
127.55
CLNC DEL
126.6 239.0
GND CON
121.7
VAN NUYS TOWER*
119.3 239.0

RNAV 1 - DME/DME/IRU or GPS.
RADAR required.

TOP ALTITUDE:
FL230

NOTE: Turbojet and high performance turboprop aircraft only.
NOTE: MISEN transition restricted to aircraft landing LAS terminal area.
NOTE: Do not file HAILO transition - to be assigned by ATC.
NOTE: Cross DER/VNY VOR/DME 1.5 DME south of or below 1750.



DEPARTURE ROUTE DESCRIPTION

▼ TAKEOFF RUNWAY 16R: Climb on heading 164° to intercept course 109° to cross DSSRT at or above 3000, then on track 109° or as assigned by ATC for vectors to cross BSHOW at or above 6000, then on track 337° to HARYS, then on transition maintain FL230. Expect filed altitude 10 minutes after departure.

ALL AIRCRAFT: ATC climb gradient: if unable to accept climb rate advise ATC prior to taxi. Rwy 16R: ATC climb rate of 600'/NM to 3000.

BLYTHE TRANSITION (HARYS5.BLH)
HAILO TRANSITION (HARYS5.HAILO)
HECTOR TRANSITION (HARYS5.HEC)
LAS VEGAS TRANSITION (HARYS5.LAS)
MISEN TRANSITION (HARYS5.MISEN)

TAKEOFF MINIMUMS
Rwy 16R: Standard with minimum climb of 540'/NM to 1302.

NOTE: Chart not to scale.

HARYS FIVE DEPARTURE (RNAV)

(HARYS5.HARYS) 20FEB25

VAN NUYS, CALIFORNIA
VAN NUYS (VNY)

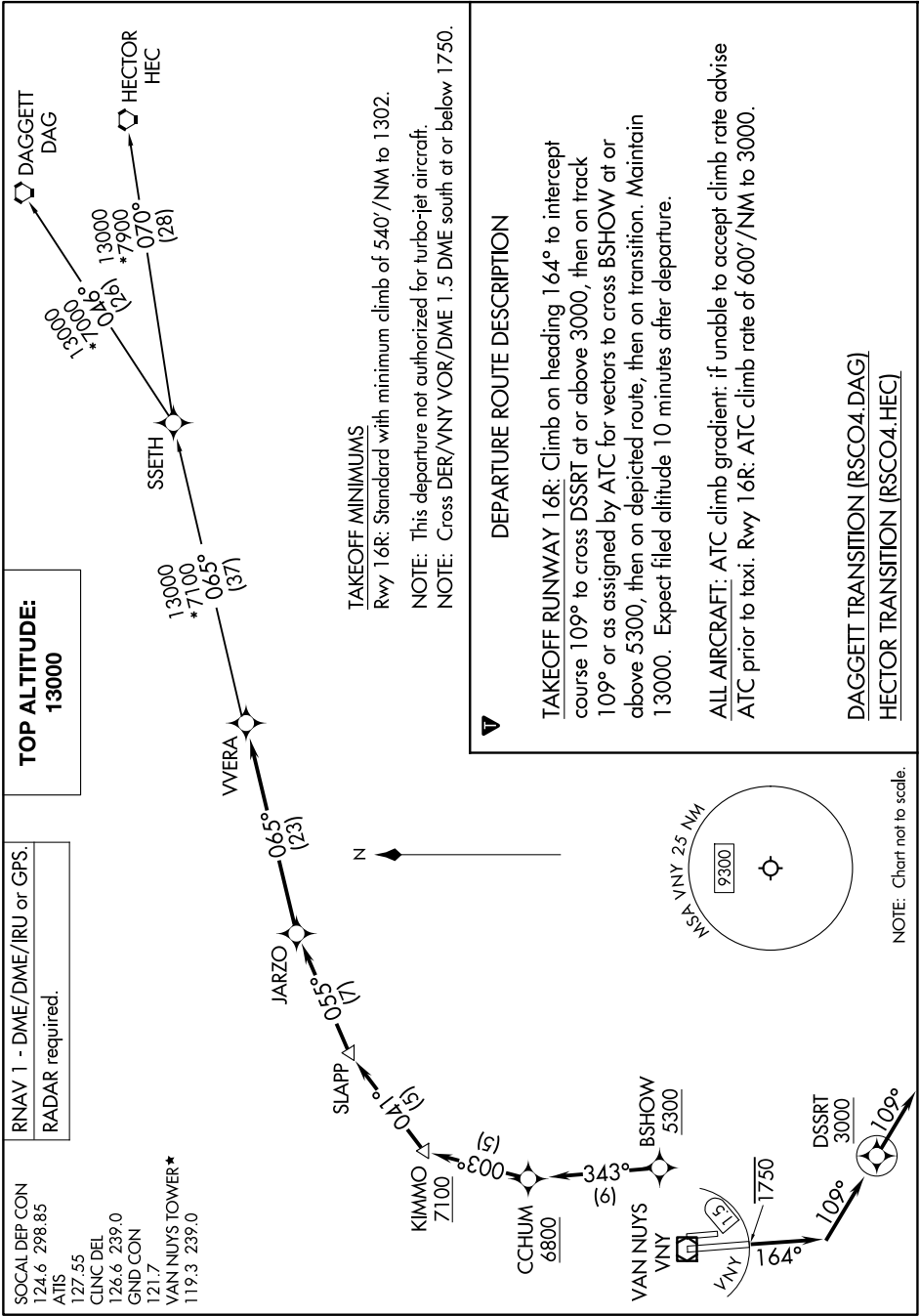
SW-3, 20 FEB 2025 to 20 MAR 2025

ROSCOE FOUR DEPARTURE (RNAV)

AL-552 (FAA)

VAN NUYS (VNY)
VAN NUYS, CALIFORNIA

SW-3, 20 FEB 2025 to 20 MAR 2025



RNAV 1 - DME/DME/IRU or GPS.
RADAR required.

SOCAL DEP CON
124.6 298.85
ATIS
127.55
CLINC DEL
126.6 239.0
GNID CON
121.7
VAN NUYS TOWER*
119.3 239.0

TAKEOFF MINIMUMS
Rwy 16R: Standard with minimum climb of 540'/NM to 1302.
NOTE: This departure not authorized for turbo-jet aircraft.
NOTE: Cross DER/VNY VOR/DME 1.5 DME south at or below 1750.

DEPARTURE ROUTE DESCRIPTION

TAKEOFF RUNWAY 16R: Climb on heading 164° to intercept course 109° to cross DSSRT at or above 3000, then on track 109° or as assigned by ATC for vectors to cross BSHOW at or above 5300, then on depicted route, then on transition. Maintain 13000. Expect filed altitude 10 minutes after departure.

ALL AIRCRAFT: ATC climb gradient: if unable to accept climb rate advise ATC prior to taxi. Rwy 16R: ATC climb rate of 600'/NM to 3000.

DAGGETT TRANSITION (RSCO4.DAG)
HECTOR TRANSITION (RSCO4.HEC)

NOTE: Chart not to scale.

ROSCOE FOUR DEPARTURE (RNAV)

(RSCO4.VERA) 20FEB25

VAN NUYS, CALIFORNIA
VAN NUYS (VNY)

SW-3, 20 FEB 2025 to 20 MAR 2025

(WLKKR5.WLKKR) 25051

WLKKR FIVE DEPARTURE (RNAV)

AL-552 (FAA)

VAN NUYS (VNY)
VAN NUYS, CALIFORNIA

SOCAL DEP CON
134.2 338.2
ATIS
127.55
CLNC DEL
126.6 239.0
GND CON
121.7
VAN NUYS TOWER*
119.3 239.0

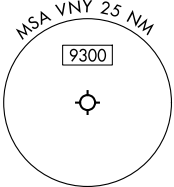
△ COREZ

RNAV 1 - DME/DME/IRU or GPS.
RADAR required.

**TOP ALTITUDE:
FL230**

TAKEOFF MINIMUMS

Rwy 16R: Standard with minimum climb of 500'/NM to 1302 then minimum climb of 420'/NM to 2600.



NOTE: Maintain at or below 250K unless otherwise directed by ATC.

NOTE: Turbojet only.

NOTE: Cross DER/VNY VOR/DME 1.5 DME south at or below 1750.

NOTE: OROSZ Transition for Bakersfield area arrivals only.

NOTE: Chart not to scale.

DEPARTURE ROUTE DESCRIPTION

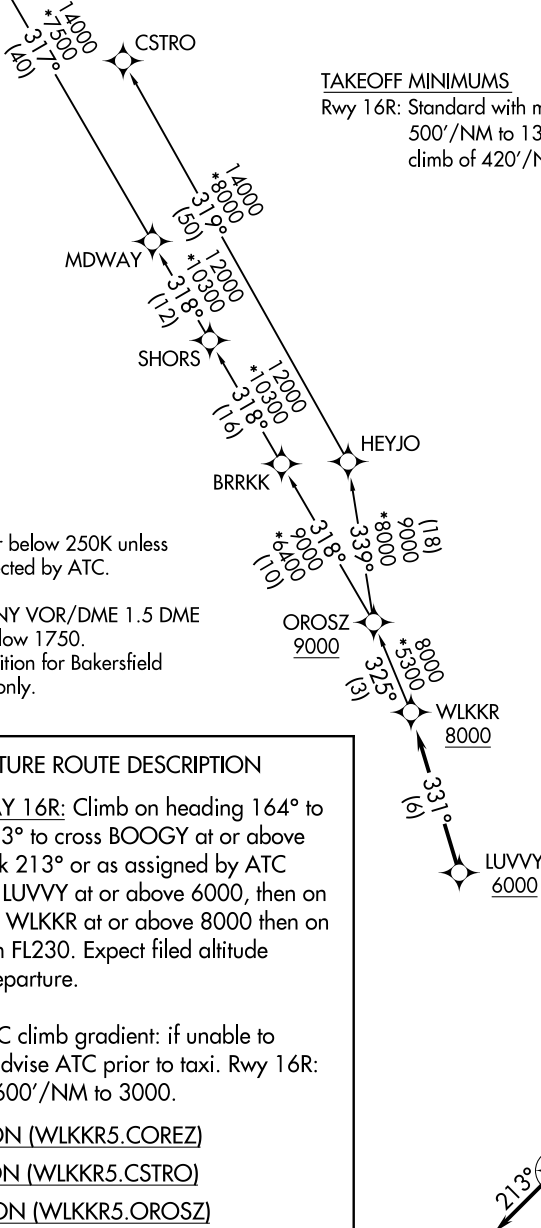
TAKEOFF RUNWAY 16R: Climb on heading 164° to intercept course 213° to cross BOOGY at or above 3300, then on track 213° or as assigned by ATC for vectors to cross LUVVY at or above 6000, then on track 331° to cross WLKKR at or above 8000 then on transition. Maintain FL230. Expect filed altitude 10 minutes after departure.

ALL AIRCRAFT: ATC climb gradient: if unable to accept climb rate advise ATC prior to taxi. Rwy 16R: ATC climb rate of 600'/NM to 3000.

COREZ TRANSITION (WLKKR5.COREZ)

CSTRO TRANSITION (WLKKR5.CSTRO)

OROSZ TRANSITION (WLKKR5.ROSZ)



SW-3, 20 FEB 2025 to 20 MAR 2025

SW-3, 20 FEB 2025 to 20 MAR 2025

WLKKR FIVE DEPARTURE (RNAV)

(WLKKR5.WLKKR) 20FEB25

VAN NUYS, CALIFORNIA
VAN NUYS (VNY)