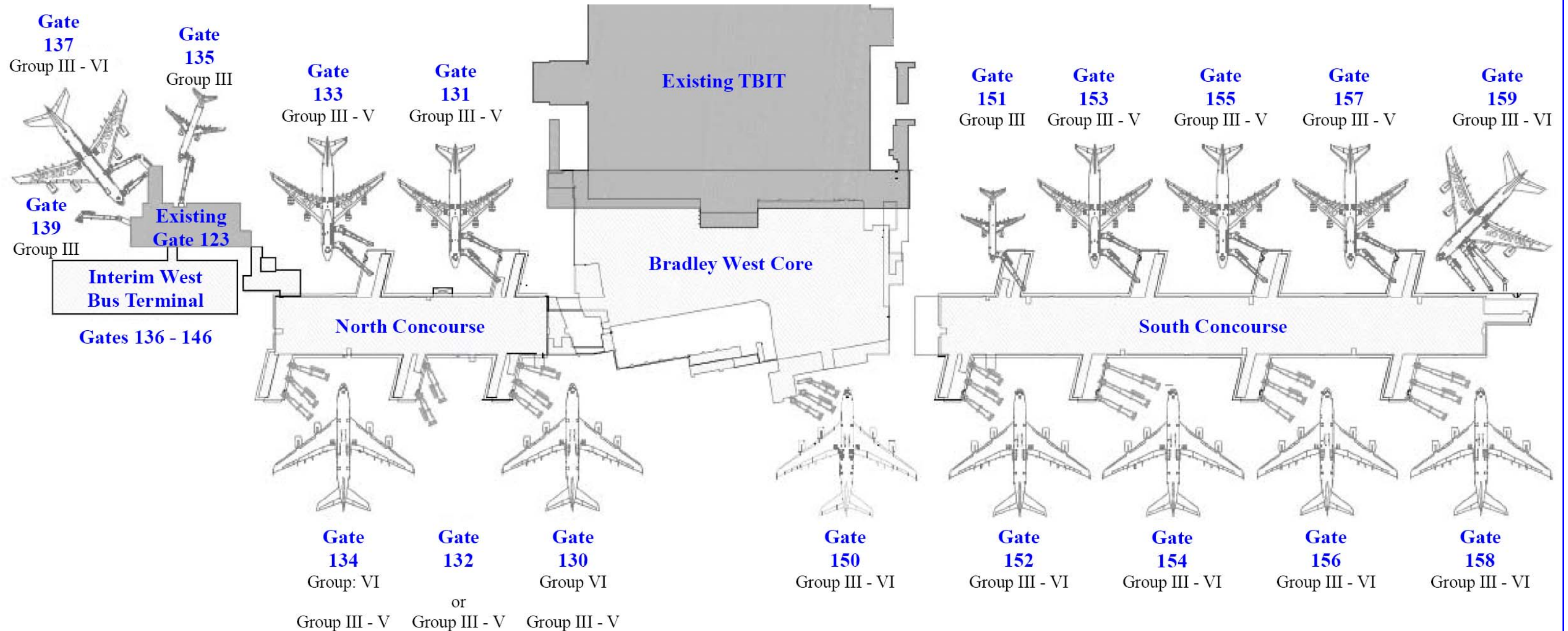


**Bradley West
Aircraft Design Group Gate Layout
December 1, 2010**



There have been several questions about the types of aircraft that will be accommodated at each gate of the new Bradley West facility. The above drawing shows each of the gates and the Aircraft Design Group (ADG) size aircraft that it can accommodate. The west side of the concourse as well as the north and south ends (with the exception of Gate 132) are designed to accommodate

every aircraft in the ADG III to VI and have three (3) passenger loading bridges at each gate. With the exception of gates 135, 139 and 151, which are for ADG III aircraft, the rest of the gates can accommodate ADG V aircraft and have two (2) passenger loading bridges at each gate. Note that Gates 130, 132 and 134 can accommodate either two ADG VI or three ADG V simultaneously.

Temporary Power and Associated Relocations (TPAR)

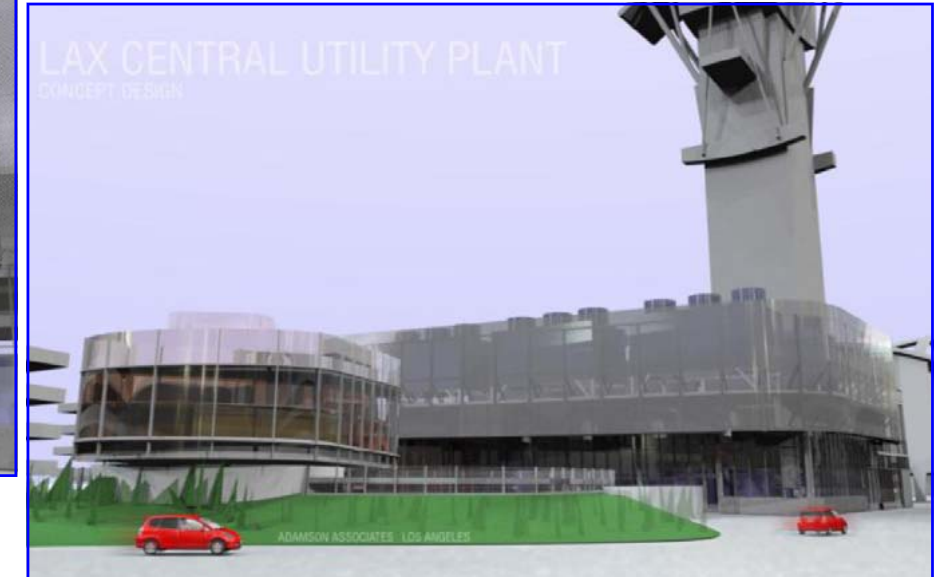
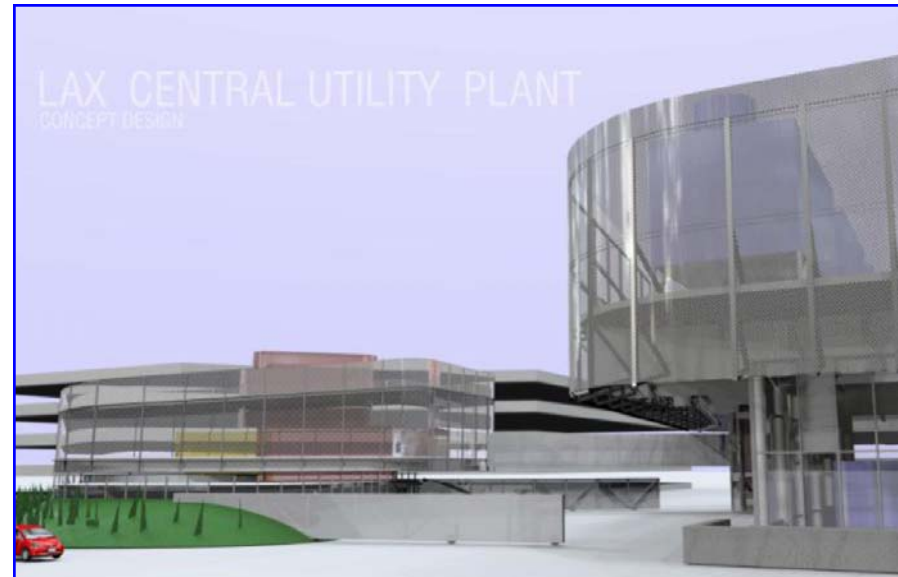
LAWA conducted informational meetings with the entire LAX community on November 16 and 17 to discuss the impacts of the Central Utility Plant (CUP) replacement. The existing CUP is nearly 50 years old and in order to meet the future needs of the Airport it must be replaced. The CUP provides the heating, cooling and fire alarm monitoring to all LAX Terminals, Admin East and the Theme Building. The new CUP will be constructed adjacent to the existing CUP, immediately west of the FAA Air Traffic Control Tower (concept designs shown on the right). Consequently, functional equipment within the existing CUP such as electrical feeders and hot and chilled water pipes must be relocated. It is this work which creates the need for temporary shut-downs of these utilities, referred to as the

Temporary Power and Associated Relocations (TPAR).

The impact of TPAR to TBIT will be:

- Periodic short term loss of either heating or cooling
- Periodic short term loss of hot water at sinks and dishwashers
- Short term loss of power to parking structures 3, 4 and the traffic signals on the west end of the Central Terminal Area (CTA)

Shutdowns have been scheduled to minimize impacts to the Terminals. The below schedule shows the dates of the pending impacts to TBIT for these utility shutdowns. This schedule is tentative and dependant on Los Angeles Department of Water and Power (DWP). The final shutdown schedule shall be confirmed and distributed to the TBIT Community.



ID	Task Name	Start	Finish	2011																																	
				Dec 12							Dec 19							Dec 26							Jan 2							Jan 9					
				S	M	T	W	T	F	S	S	M	T	W	T	F	S	S	M	T	W	T	F	S	S	M	T	W	T	F	S	S	M	T	W		
1	TPAR Shutdowns - TBIT	Mon 12/13/10	Wed 1/12/11	[Gantt bar spanning from Dec 13 to Jan 12]																																	
2	Hot Water Shutdown 0000 - 0400	Mon 12/13/10	Mon 12/13/10	[Red bar on Dec 13]																																	
3	Chilled Water Shutdown 2200 - 0400	Mon 12/13/10	Tue 12/14/10	[Blue bar on Dec 13-14]																																	
4	Hot Water Shutdown 2200 - 0400	Mon 12/13/10	Tue 12/14/10	[Red bar on Dec 13-14]																																	
5	Chilled Water Shutdown 2200 - 0400	Tue 12/14/10	Wed 12/15/10	[Blue bar on Dec 14-15]																																	
6	Chilled Water Shutdown 2200 - 0400	Wed 12/15/10	Thu 12/16/10	[Blue bar on Dec 15-16]																																	
7	Hot Water Shutdown 2200 - 0400	Wed 12/15/10	Thu 12/16/10	[Red bar on Dec 15-16]																																	
8	Holidays - No Shutdowns	Sat 12/18/10	Mon 1/3/11	[Thick black bar from Dec 18 to Jan 3]																																	
9	Chilled Water Shutdown 0000 - 0400	Mon 1/3/11	Mon 1/3/11	[Blue bar on Jan 3]																																	
10	Chilled Water Shutdown 0000 - 0400	Tue 1/4/11	Tue 1/4/11	[Blue bar on Jan 4]																																	
11	Chilled Water Shutdown 0000 - 0400	Wed 1/5/11	Wed 1/5/11	[Blue bar on Jan 5]																																	
12	Chilled Water Shutdown 0000 - 0400	Thu 1/6/11	Thu 1/6/11	[Blue bar on Jan 6]																																	
13	Hot Water Shutdown 0000 - 0400	Sat 1/8/11	Sat 1/8/11	[Red bar on Jan 8]																																	
14	Power - Traffic Signals West CTA 0800 - 1200	Sat 1/8/11	Sat 1/8/11	[Green bar on Jan 8]																																	
15	Power - Parking Structures 3 & 4 0230 - 0630	Wed 1/12/11	Wed 1/12/11	[Green bar on Jan 12]																																	