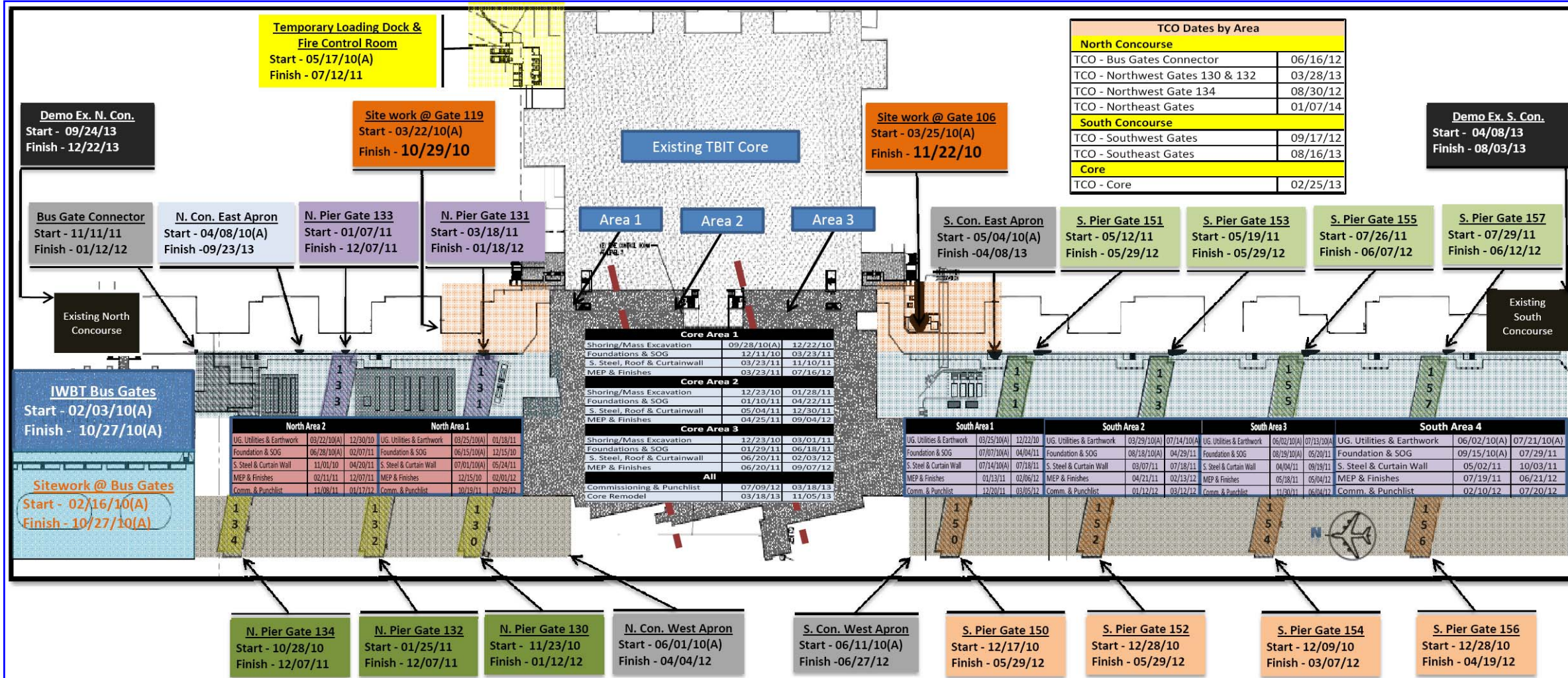
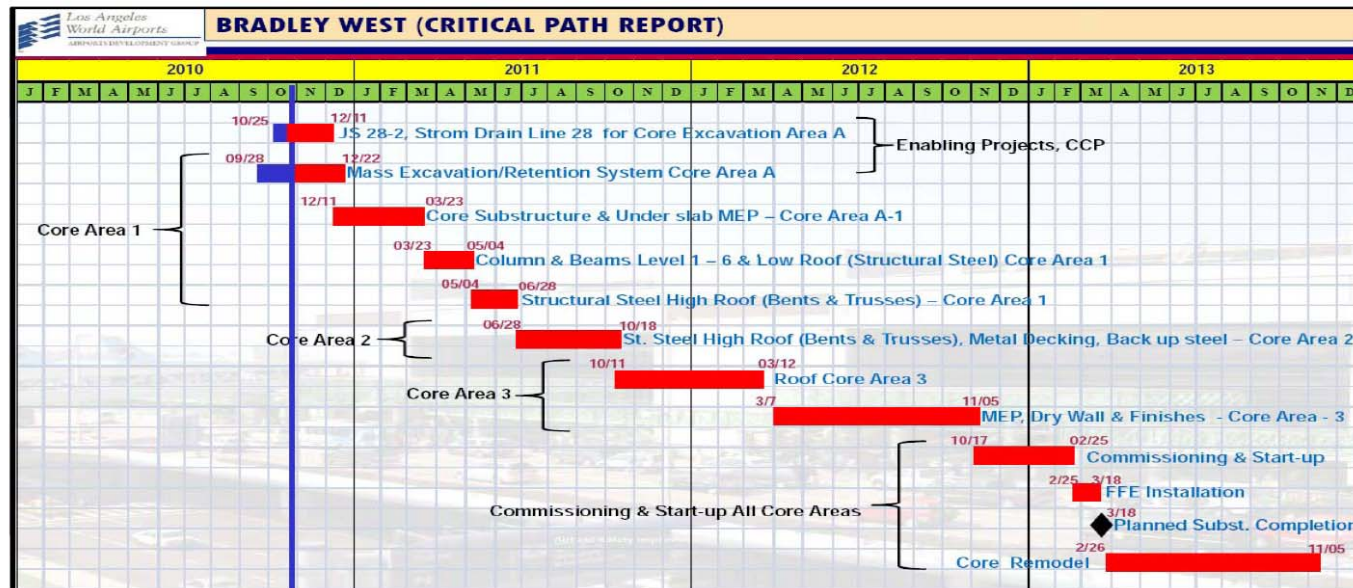


# Bradley West Program Schedule



### Schedule Notes

→ Critical Enabling Project - Interim Milestones: Core Egress Overall. The TBIT Airlines that utilize the One World and Star Alliance Premium Lounges were recently impacted by the construction and relocation of the emergency exits from these lounges. The removal of the existing emergency egress stairs are required to make way for the back side of TBIT construction. The new temporary stairs on both the south and north end of TBIT, come across the concourse roof and on the ramp at Gates 106 & 119 (pictures below). In the event there is an emergency causing evacuation of the lounges, these new stairs will facilitate egress.



Description	Contract Completion Dates	October 2010 Sch. Completion Dates	Variance (Float)
LADWP 34.5 KV & 4.8 KV Ductbank	05/28/10(A)	12/01/10	
Communication Ductbank (North)	07/12/10(A)	09/14/10(A)	
Communication Ductbank (South)	06/17/10(A)	11/20/10	
4160-480 V Relocation Substantially Complete	04/26/10(A)	09/28/10(A)	
Core Egress Overall	04/07/10(A)	12/14/10	
Concourse Egress	04/13/10(A)	10/09/10(A)	
Interim to Temporary Loading Dock	09/22/10(A)	10/28/10(A)	

Milestone	Description	Contract Completion Dates	October 2010 Sch. Completion Dates	Variance (Float)
Bradley West Gates				
1	Substantial completion of IWBT	11/30/10	10/25/10(A)	N/A
2	Tenant Space Turn Over for Build Out	06/12/12	07/16/12	-34
3	Early Operation of Gate 134/134 A	08/01/12	09/29/12	-59
4	West Gates Substantial Completion	12/12/12	12/12/12	0
Bradley West Core				
1	Premier Lounge & Restaurant Tenant Space Turnover	04/12/12	07/18/12	-97
2	Tenant Space Turn Over for Build Out	06/12/12	07/18/12	-36
3	New Core Construction	12/12/12	03/18/13	-96
4	Substantial completion of Core Renovation	08/05/13	11/05/13	-92

## Building Information Modeling (BIM)

