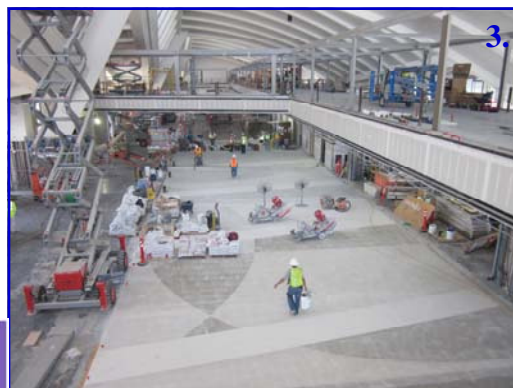




Construction Photographs

- 1. North Concourse
- 2. Gate Pier - Level 5
- 3. North Concourse
- 4. Sterile Corridor
- 5. Sterile Corridor Escalators
- 6. Central Core Windows
- 7. Overall Project
- 8. Overall Project



TBITEC

TBITEC
 380 World Way
 Box S - 18
 Los Angeles, CA 90045
 Phone: 310 - 646 - 9378
 Fax: 310 - 646 - 2981
 SITA: VNYLXCR

Published for TBITEC by:

AvAirPros

TBIT Construction News



AvAirPros

Now Boarding

Inside this issue:

- Memorial Day Commemoration **2**
- Welcome To TBIT **2**
- New Face Of The CTA **3**
- Construction Photographs **4**

Insert

- Summer Season Bag Management Plan
- TBIT CBIS/BHS Update

The first of the Passenger Boarding Bridges (PBB) have arrived and are installed at Gate 134 in the new Bradley West facility. Located on the northwest corner of the new north concourse, Gate 134 is the first of the new gates that will open for passenger service, current planned opening of Gate 134 is September of this year. This gate along with eight others will accommodate Aircraft Design Group (ADG) VI airplanes. As shown in the below photographs, the PBB's connect to large concrete and glass gate piers along both sides of the new concourses.

For ADG VI gates there will be two PBB's on the fourth level and one PBB for the upper deck on the fifth level. These gate piers house an elevator, escalator and stair to facilitate passenger movement between the upper and lower deck of the aircraft.

Delivery and installation of the first PBB marks a major milestone for the Bradley West program and the opening of Gate 134. Starting in and during the month of August 2012, aircraft gate fit checks will occur for each aircraft planned for operation at this new gate.



Memorial Day Commemoration



A giant American flag was hung inside the Central Core of the new Bradley West construction site, where military veterans now working on the project gathered for a commemoration of Memorial Day. A special thank you to all who have served, are still serving or who have family who are serving.

Welcome To TBIT



On May 28, 2012 Air France started their Airbus A380 service to Los Angeles joining Qantas, Singapore Airlines and Korean Airlines. LAWA welcomed the inaugural A380 flight with the traditional water cannon salute shown in the photograph on the left.

Bradley West was designed to accommodate the projected increase in Aircraft Design Group VI airplanes which essentially means the Airbus A380. The planned early opening of Gate 134 on the new north concourse in September will better serve the A380 operations and the entire TBIT airline community.

New Face of the CTA

Work is now starting on the project defined as the New Face of the Central Terminal Area (CTA). The first of several temporary lane closures will take effect within the CTA roadways marking the start of vehicular traffic impacts expected over the next two years from various construction projects. The following CTA roadway and pedestrian alerts will begin at 0100 on June 5:

- The three curving inner lanes on the Lower Level between the west end of Terminal 3 to the north end of TBIT will be closed to traffic.
- The curving curbside lane on the Upper Level between the west end of Terminal 3 to the north end of TBIT will be closed to traffic through July 2012.
- Escalators and stairs on the north side of TBIT on both the Upper and Lower Levels will be closed through September 2012.
- Lane restrictions on Lower Level will occur nightly through June 2012.

The New Face of the CTA project includes the first installation of the new roadway light poles which eventually will wrap around the entire outer edge of the Upper Level roadway of LAX. Additionally and more significant are the improvements that will be made to the front entrance of TBIT that will change not only the look but also the customer service. Replacement of the outside escalators, starting with the north side, requires 8 foot high barricades placed around the work area as illustrated in the drawings below. Next, LAWA will be removing the existing sidewalk canopy in front of TBIT on the Upper Level roadway and replacing it with a new canopy that includes a Tom Bradley International Terminal sign. Work on the Lower Level will include landscape enhancements and additional lighting. Future CTA road closures and all other impacts to both airport and airline operations associated with the New Face of the CTA project will be coordinated and communicated by LAWA.

