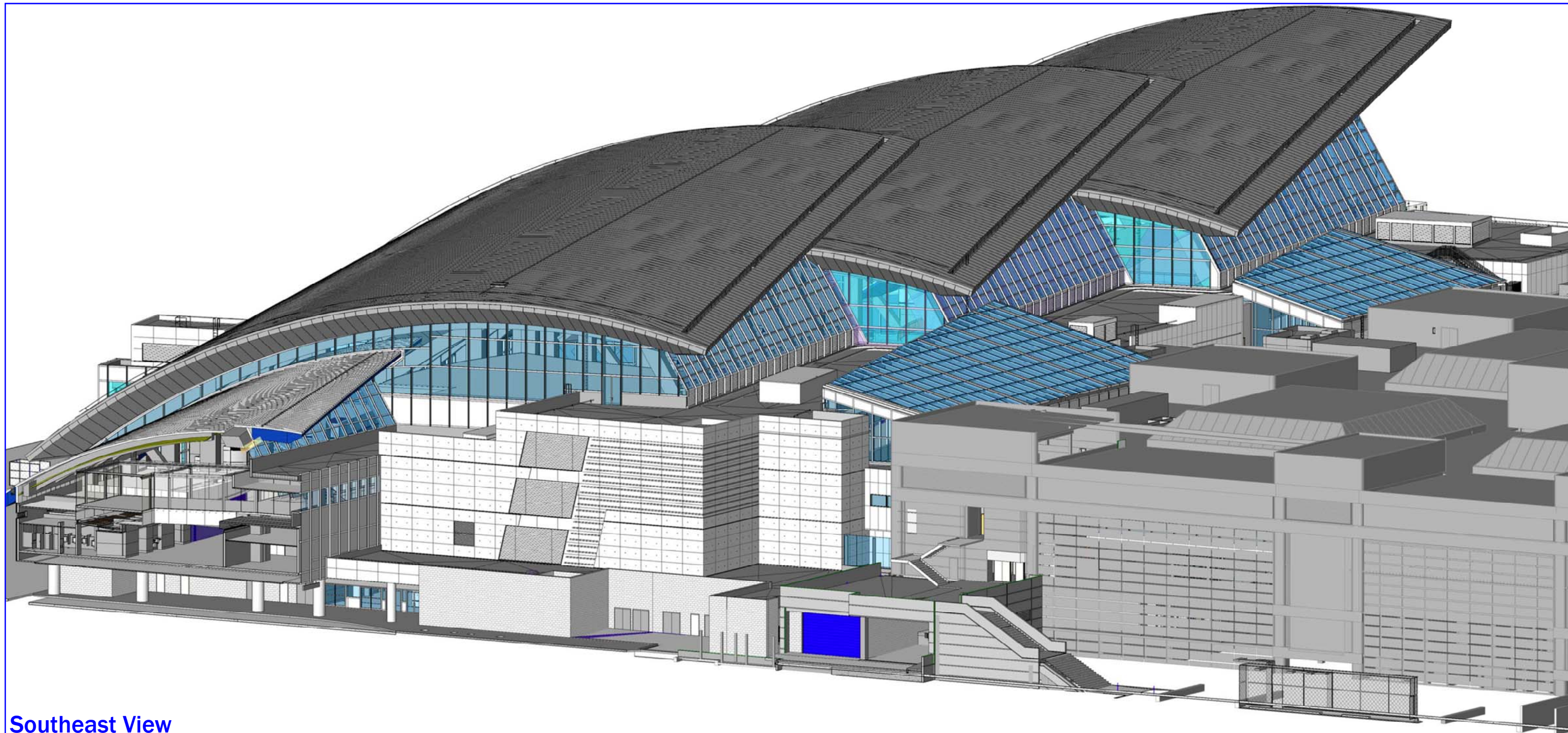


Central Core



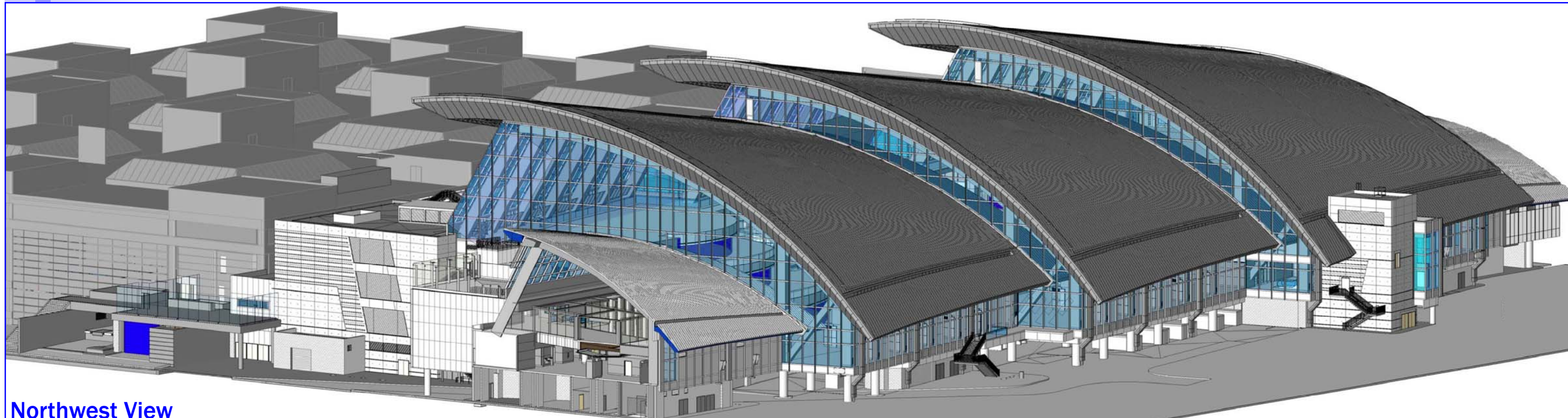
Southeast View

Each of the renderings on this insert illustrate a different perspective of the new Central Core in relation to the existing Tom Bradley International Terminal. From these pictures and the views into the construction site from the Central Terminal Area and the existing building, the LAX community can begin to visualize the final look for the new Tom Bradley International Terminal.

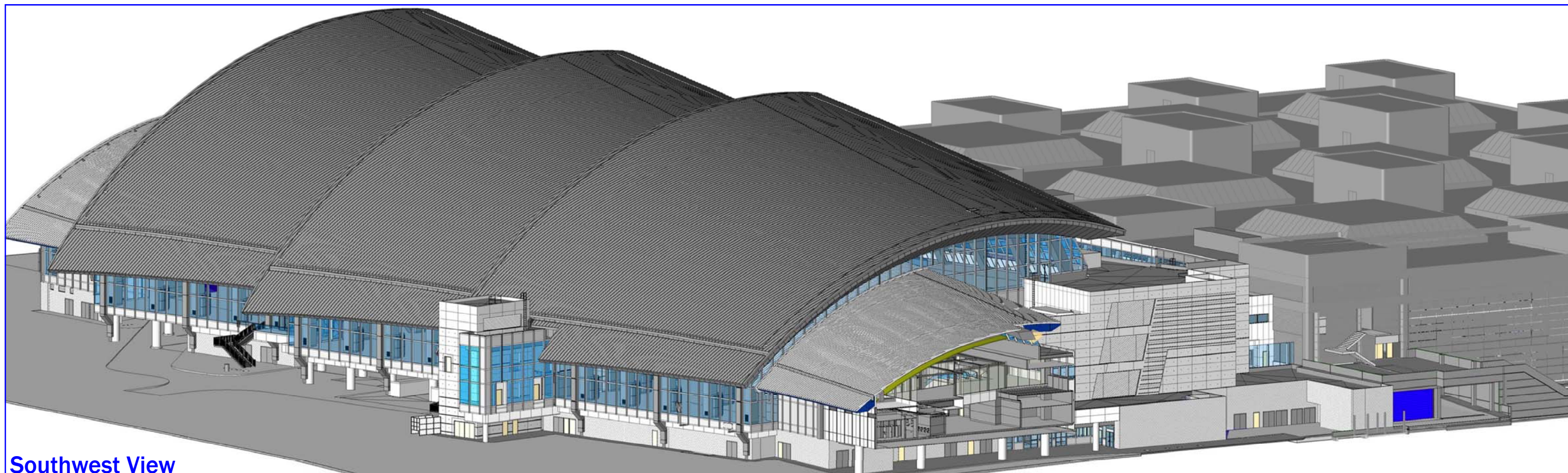
As noted in the feature article of the newsletter, the major structural steel elements of the new Central Core wrapped up in February 2012. The roof, metal panels and glass curtain wall are now critical components to 'dry-in' the new building. Interior finishes and the activation, testing and commissioning of certain systems will soon be the focus as the tenants begin construction of their spaces.

New Tom Bradley International Terminal Fun Facts:

- 1,179,00 Useable Square Feet
- 45,000 Tons of Steel
- 310,785 Square Feet of Glass
- 405,405 Cubic Feet of Concrete



Northwest View



Southwest View