

# TBIT Construction News



## Japan Airlines Use New Facility

Japan Airlines (JL) became the eighth airline to begin operations in the new Bradley West north concourse. JL successfully conducted their first operation with a B777-300 at Gate 130 on 21 March 2013. With each new operation, the airlines are beginning to understand the new features and have experienced improvement to the passenger departure and arrival operations. As a reminder, in order to begin operations in the new Bradley West facility, every airline is required to conduct testing of the Common Use Terminal Equipment (CUTE), training of the Electronic Visual Information Display System (EVIDS) and complete the Passenger Boarding Bridge (PBB) training developed by TBITEC. LAWA Operations will not assign an airline to a new gate until the CUTE testing has been signed off by SITA, EVIDS training is conducted by LAWA IT, as well as verification from TBITEC that sufficient personnel have completed the PBB training to support the airline operation.



**TBITEC**

TBITEC  
380 World Way  
Box S - 18  
Los Angeles, CA 90045  
Phone: 310 - 646 - 9378  
Fax: 310 - 646 - 2981  
SITA: VNYLXCR

Published for TBITEC by:

**AvAirPros**

## AvAirPros

### Inside this issue:

- Central Core Level 4 Departures **2**
- Japan Airlines Use New Facility **3**

### Insert

- Central Core Level 3 CBP Primary
- Central Core Level 1 Baggage Claim

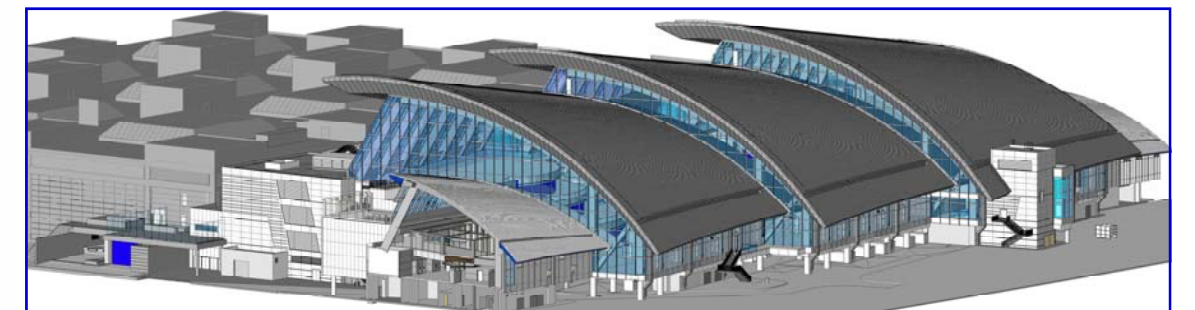
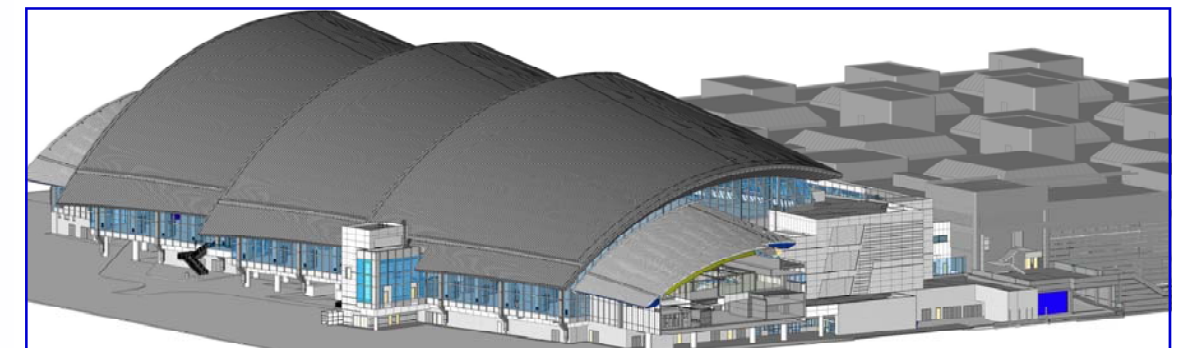
## Bradley West Central Core

As the opening of the new Bradley West facility draws near, the focus for this month's newsletter is the Central Core and the different features associated with each level. This Central Core, along with the new concourses, will change how the international arriving and departing passenger will view the traveling experience at LAX.

The architecture of the Bradley West Central Core roof is meant to mimic the waves of the Pacific Ocean as it hits the Southern California beaches. This new Central Core roof stands over 130 feet high and represents the centerpiece for the new Tom Bradley International Terminal. It has six levels, plus a future seventh level planned, and in total is close to 160 feet tall from basement to roof.

Among other things, the new Central Core will contain an Aircraft Design Group (ADG) VI gate which will have direct access to the U.S Customs and Border Protection (CBP) areas. The new Central Core will provide state of the art restaurants, concessions, retail shopping, electronic media and airline premium lounges. Lower levels of the Central Core will contain an inbound bag room, baggage claim and all CBP facilities.

Between the new building architecture and the improvements to everything from passenger processing, to aircraft parking, to aircraft servicing, to brand new airline premium lounges, to a first class shopping and dining experience, LAX will indeed be considered a world class facility.



## Central Core Level 4 - Departures



Construction - 01 April 2013



Artist Rendering



Artist Rendering

After passing through the TSA Security Screening Check Point, departing passengers will enter the enormous (140,000 square foot), multi-level (over 100 foot high ceilings) space containing new restaurants, concessions, retail shopping, electronic media and airline premium lounges. The artist renderings on the left side of this page depict the new fourth level of the Central Core from two different perspectives and the above picture shows the current state of construction.

It is now easy to see how each of the new features within this area are beginning to take shape and how spectacular this new space will be. In the upper left portion of photograph the new multimedia screens are being installed, the center construction is planned for high end retail concession spaces, and the elevator/clock tower feature is progressing to the right. The sheer magnitude of the building finally begins to take shape for the TBIT community to appreciate in the above photograph or during a construction walkthrough. If interested, please contact Jeff Wosman with AvAirPros at [j.wosman@avairpros.com](mailto:j.wosman@avairpros.com) to schedule a walkthrough. This will allow the TBIT airlines to walk the construction site with someone who can provide answers to questions and describe the various elements of the new facility.