

TBIT Construction News



AvAirPros

Bradley West South Concourse

Inside this issue:

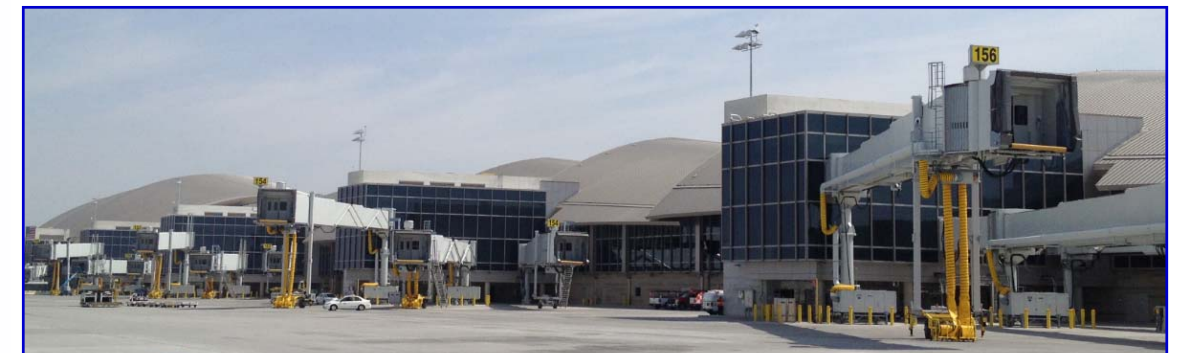
- South Concourse Aircraft Gate Fits **2**
- Three More **3**
- Construction Photographs **4**

As the next phase of the Bradley West Program draws near, the focus for this month's newsletter is the commissioning and activation activities associated with the new South Concourse. With this next phase, four new gates on the west side of the South Concourse will open along with one new gate in the Central Core which will provide the TBIT airlines with five additional Aircraft Design Group (ADG) VI gates. These new gates, along with Gates 130 and 134 in the North Concourse, contain three passenger boarding bridges to accommodate the Airbus A380. Gate fit exercises are currently being conducted to

verify the operational parameters for different aircraft at these new gates. Similar to the requirements established for the North Concourse, each airline will be required to conduct Common Use Terminal Equipment (CUTE) testing at each new gate. TBITEC and AvAirPros will continue to coordinate gate fits, conduct site walkthroughs as well as schedule the appropriate testing and training programs necessary to familiarize the TBIT airlines with the new facility. Understanding these new features along with the familiarization of the new facility will become imperative for successful airline operations.

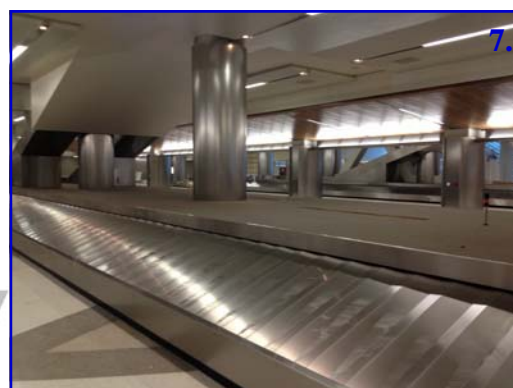
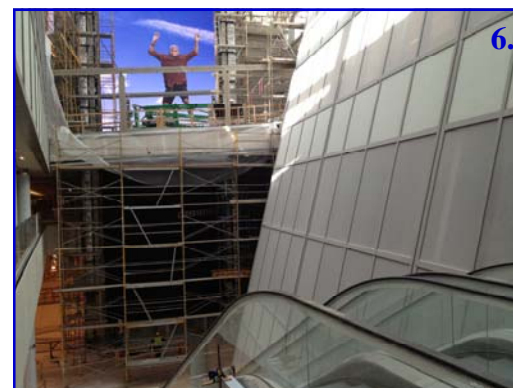
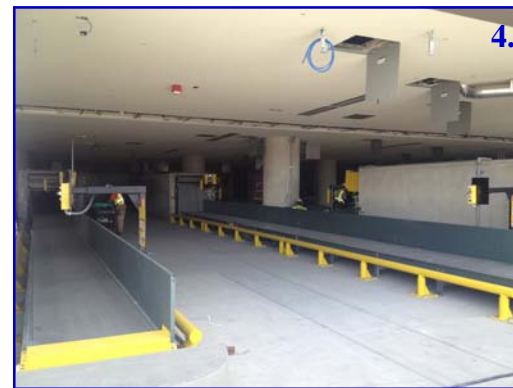
Insert

- South Concourse Operational Readiness
- New In-Bound Bag Room



Construction Photographs

1. Central Core - Level 4 Time Tower & FIDS
2. Central Core - Level 4 IEMS Monitors
3. Central Core - Level 4 South Concourse Portal
4. Central Core - Level 3 In-Bound Bag Room
5. Central Core - Level 3 CBP Primary
6. Central Core - Level 3 South Lightwell
7. Central Core - Level 1 Baggage Claim
8. Central Core - Level 1 Baggage Claim



TBITEC

TBITEC
 380 World Way
 Box S - 18
 Los Angeles, CA 90045
 Phone: 310 - 646 - 9378
 Fax: 310 - 646 - 2981
 SITA: VNYLXCR

Published for TBITEC by:

AvAirPros

South Concourse Aircraft Gate Fits

In preparation for the start of operations on the South Concourse, aircraft gate fits have been initiated with the A380 and B747-400. With minor adjustments, these gate fits have been successfully performed at Gates 150, 152, 154 & 156. Additional gate fits are underway with the B777-300 and will continue into early June. The purpose of the gate fit is to verify that all aircraft ground support systems are in working order prior to live operations. The following items are verified during a gate fit:

- Aircraft Positioning & Clearances
 - Passenger Boarding Bridge Operations
 - Fuel Hydrant Locations
 - Ground Service Equipment Access & Maneuverability
- Gate fits will also be conducted at the Central Core Gate 148 once the construction and commissioning activities for this area are complete.



CATHAY PACIFIC



A special thank you is extended to Cathay Pacific and QANTAS for their assistance and providing their aircraft for the South Concourse gate fits.

Three More

In May three more airlines, China Southern (CZ), Iberia Airlines (IB) and British Airways (BA), began operations at the new Bradley West North Concourse. CZ successfully conducted their first operation with the A380 at Gate 130 on the 21st of May. IB became the first airline to bring the A340-300 to the new facility on the 22nd of May and BA conducted their first operation with the B747-400 at Gate 130 the following day.

These three airlines completed the required testing/training and are in the rotation for operations at the new facility. As a reminder, in order to begin operations in the new Bradley West facility, every airline is required to conduct CUTE testing at each gate, training of the Electronic Visual Information Display System (EVIDS) and complete the Passenger Boarding Bridge (PBB) Training Program developed by TBITEC.

LAWA Operations will require all TBIT airlines to complete the testing/training requirements and perform at a minimum one (1) operation in the North Concourse prior to assignment to the new South Concourse gates. All TBIT airlines have completed the EVIDS training as well as CUTE testing at Gates 130, 132 and 134; however, eleven (11) have yet to complete the PBB Training Program.

For those remaining airlines that have not completed the requirements please contact Joe McGlynn with TBITEC at jmcglynn@tbiteclax.com. Once the airline station manager verifies that sufficient personnel are qualified to operate the PBB an orientation/walkthrough will be conducted by AvAirPros and then LAWA Operations will assign the airline to one of the North Concourse gates.

