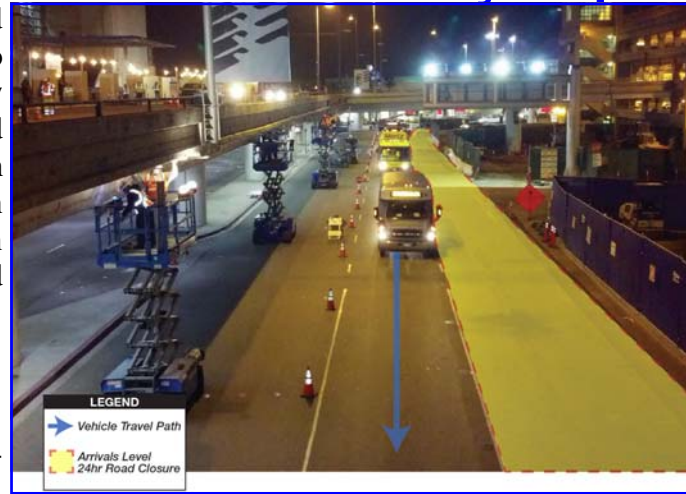


CTA Roadway Impacts

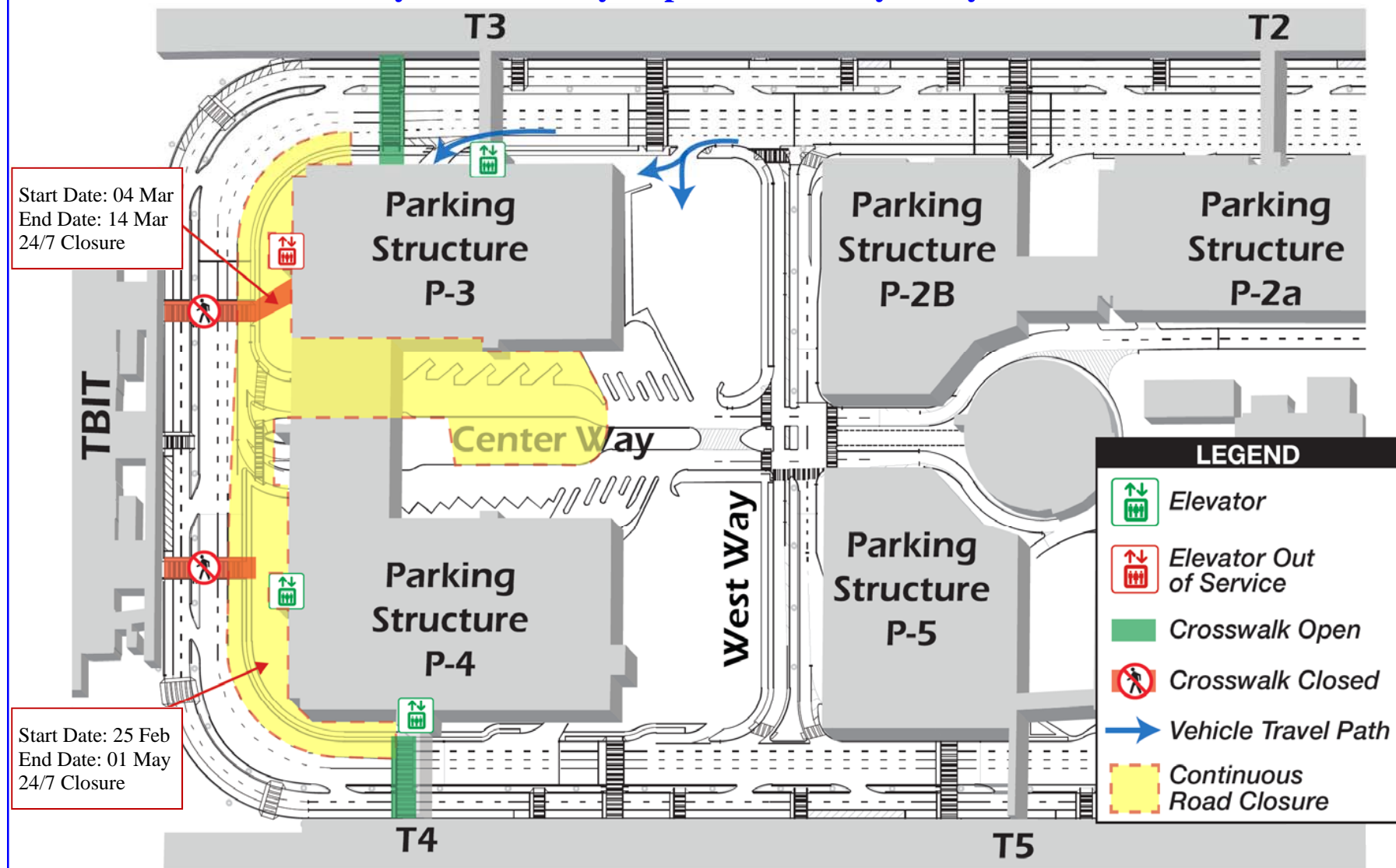
Beginning in March, there will be significant daily impacts to the roadways around LAX, specifically the roadways in front of TBIT. These closures are necessary to accommodate the ongoing construction to support the Central Utility Plant and New Face of Central Terminal Area projects. While the closures are scheduled to try and minimize the impacts to the airport roadway, they will have an operational impact on TBIT. These closures are required to provide sufficient work space for construction at the TBIT entrances as well as the installation of the light poles and light band on the outer lane of the roadway. The following types of roadway impacts are planned for daytime and during the night:

- Continuous Road Closures
- Nightly Lane Restrictions

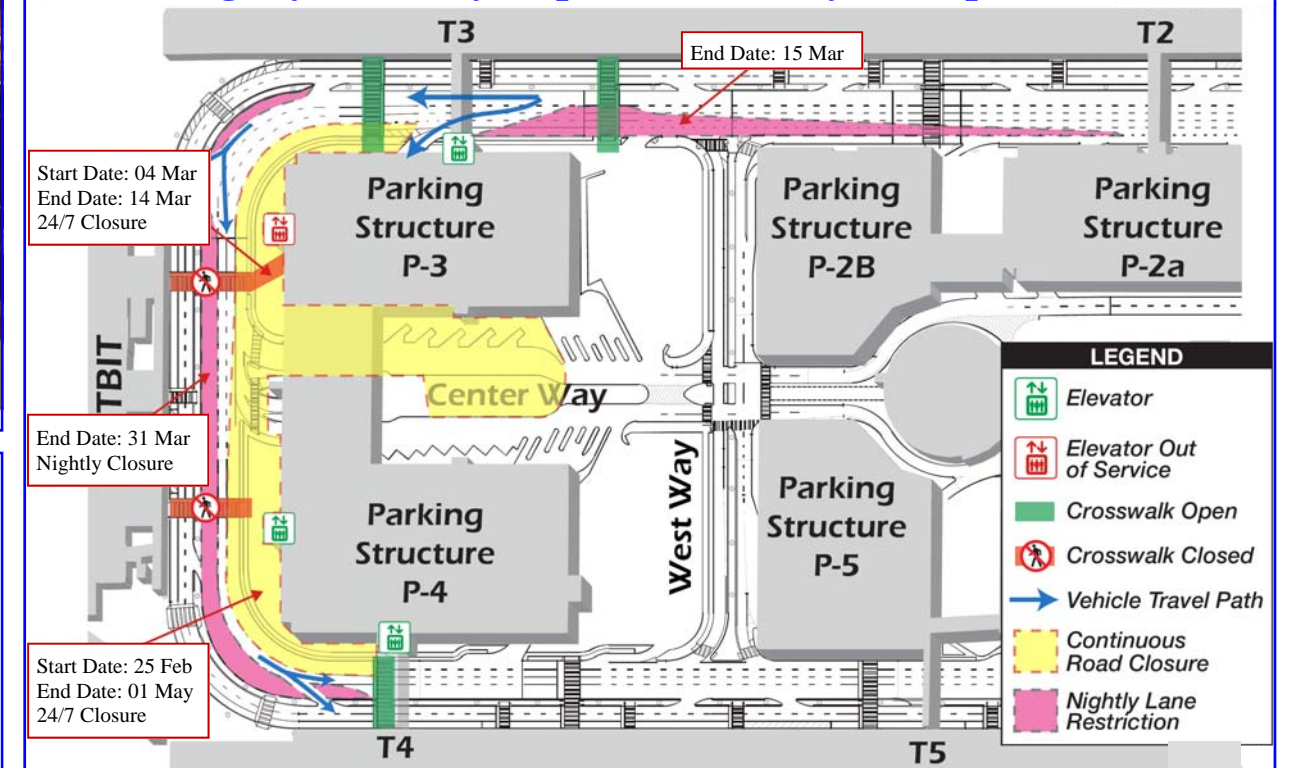
The location, scheduled durations for these roadway closures and the types of closure are graphically depicted in the drawings on this page.



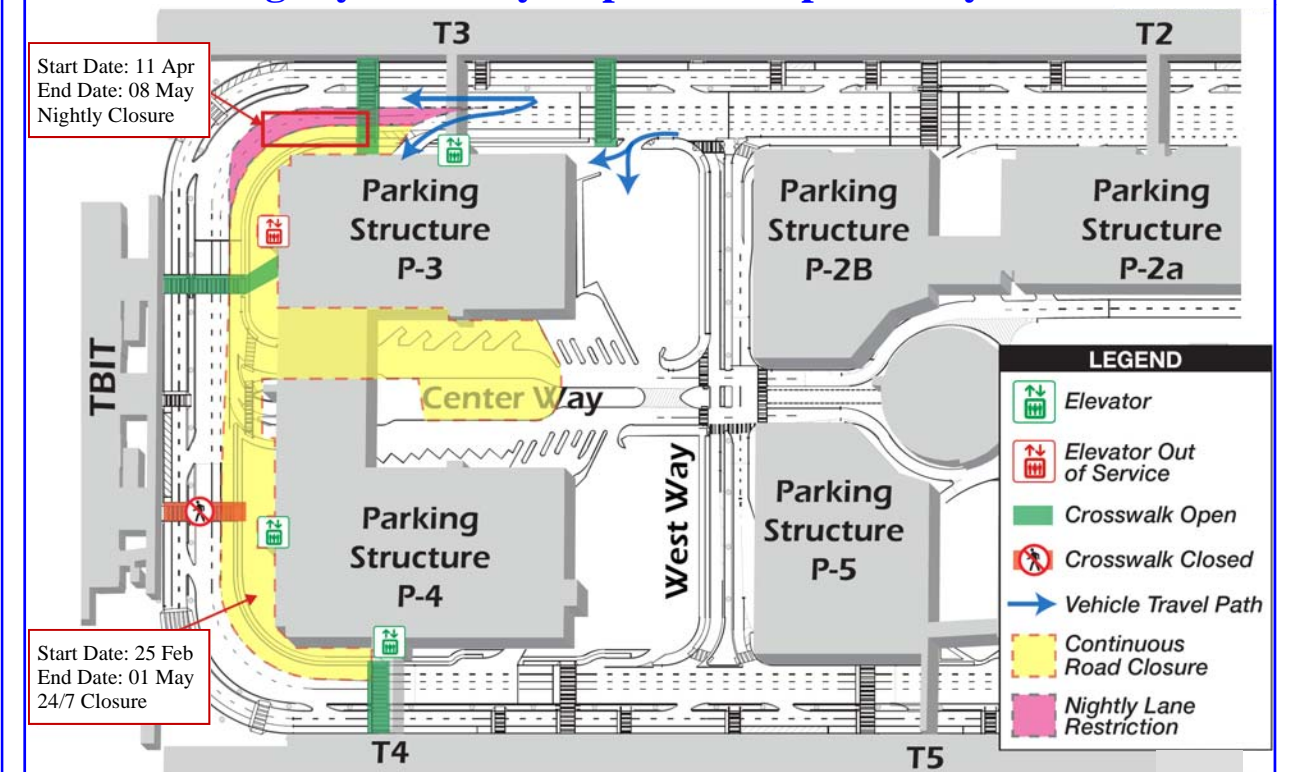
Daytime Roadway Impacts: February - May 2013



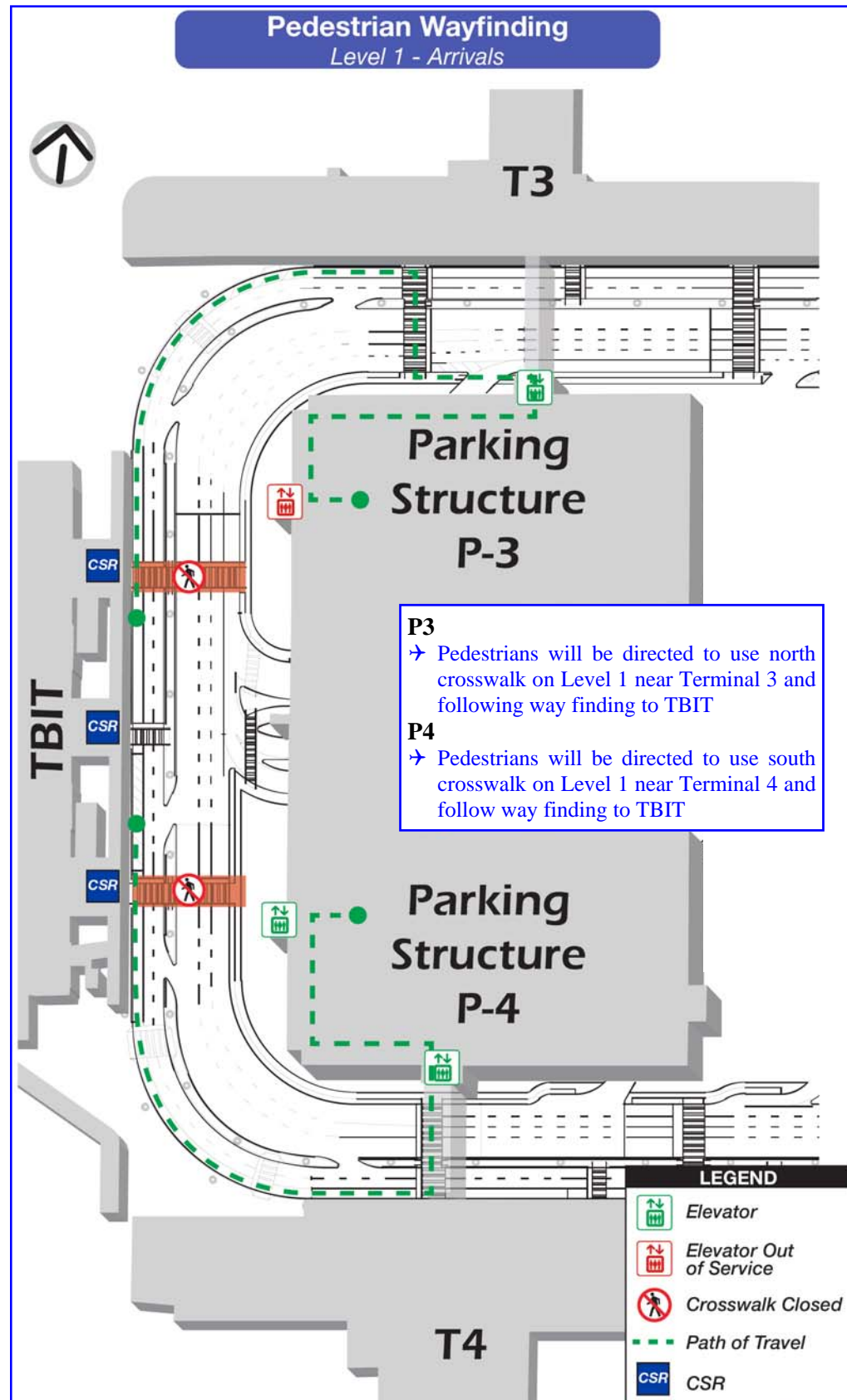
Nightly Roadway Impacts: February - 10 April 2013



Nightly Roadway Impacts: 11 April - May 2013



CTA Pedestrian Impacts



Beginning in March, along with the impacts to the roadways in front of TBIT, there will be significant impacts to the pedestrian access, specifically the crosswalks on the lower level roadway from Parking Structure 3 and Parking Structure 4 will be closed.

This closure will require all pedestrians to use the north crosswalk (between Terminal 3 and Parking Structure 3) or the south crosswalk (between Terminal 4 and Parking Structure 4) to access the TBIT arrivals level. In addition to the crosswalk closure, the west side elevator in Parking Structure 3 will be under refurbishment and will not be accessible from Level 1 to Level 3. Pedestrians that require an elevator will be required to use the north elevator lobby.

Appropriate signs will be in place to assist way finding during the closures. In addition to the signage, LAWA Customer Service Representatives (CSR) and Traffic Officers will be positioned in front of TBIT entrances, both on the lower and upper levels to assist during peak hours of passenger and vehicular traffic movement.

Locations for these crosswalk closures and the approved pedestrian path of travel are shown in the graphics on this page. A LAX Operations Advisory issued on 01 March 2013 that contains this information is available at the LAWA Operations website: <http://www.lawa.org/airops.aspx>.

