

LAWA Terminal Operations Newsletter

Los Angeles World
Airports

Terminal Operations

- > Special Olympics: Departures August 2nd–3rd
- > Runway 24R Extended Closure: June–October 2015

Visit us online:

laxishappening.com

lawa.org

Follow us on Twitter:

@flyLAXairport

@flyONTairport

@VanNuysAirport

Inside this issue:

Terminals 1, 2, & 3	2
Tom Bradley Intl	3, 4
Terminals 4, 5, 6, 7, & 8	5

Special Olympic Departures

On August 3rd, over 8000 athletes and coaches representing 165 countries smoothly departed from LAX after a successful Special Olympic World Games.

To handle the estimated 150-200 coach buses, LAWA and it's partners, coordinated and controlled the transportation portion to ensure that the operations of the airport were impacted minimally.

Buses left USC or UCLA, and were sent to a holding lot before being metered and dispatched to their appropriate bus drop-off zone.

While the wait times at the holding lot were relatively short, activities were provided including a DJ, sno-cone truck, and other food and drink. Not to mention plenty of aircraft spotting.

Terminal Operations would like to thank everyone involved for putting in many hours of hard work to ensure that the departures went smoothly as possible. Almost every department of LAWA, numerous airlines, TSA, CBP, law enforcement, and various stakeholders assisted. Thank you!



Good Year Blimp conducts a go-around RWY 24L

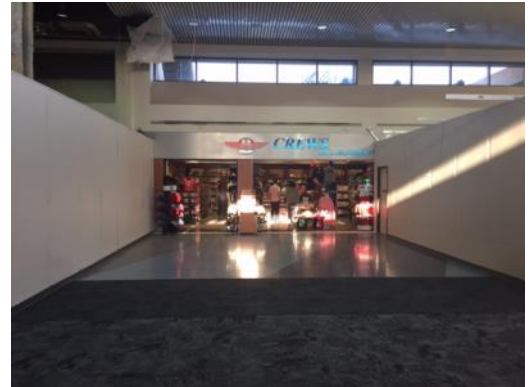
North Terminals Update—T1, T2, & T3

Terminal 1

During the month of August, the barricades on departures level continued to be relocated as the terrazzo work progressed. Temporary relocation of Tech on the Go and a reduced entrance of Crews of California, allowed for some of the most difficult phasing to be completed.

The newly constructed retail space has been turned over to the first new concessions for build out. Rock & Brews, Quicksilver, Brookstone, I Love LA, and Treat Me Sweet are expected to open by the end of the year.

On the ramp, concrete has begun to be poured on the ramp between gates 9 and 13. In September, we can expect the installation of G13 PBB.



Terminal 2

New terminal 2 concession projects continues progressing with the opening of the Ciabatta Bar. With this opening, that leaves only Barney's Beanery as the remaining concession planned on opening within the year.

Hensel Phelps work in the terminal is nearing completion as the final holdroom RENO at gate 22 commences.

On the ramp, the PBB for gate 21 was installed and work has now switched over to gate 21B. Gate 21B PBB will be removed and replaced. Expected completion time is early October.



Terminal 3

Starting August 1st, the airlines of T3 have formed a consortium named T3 TBITEC to represent their issues and manage the BHS, PBB, as well as some other smaller items in the terminal.

Initial construction activity has commenced on the relocation of the Virgin America customer service center podiums. The service center is being disbanded and the podiums will now be making their way over to VX preferential gates.

Also commencing is the expansion of VX ticketing counter area. The counters will be expanding to the east and utilizing some unused space from the oversized BHS area.

Relief from the heat should be coming in the form of a new temporary HVAC system planning to be installed in the coming weeks. Stay tuned.



Tom Bradley International Terminal

Way-finding Improvements

New graphics have been installed in the FIS temporary in-transit corridor to promote easier way finding for those passengers proceeding to the security check-point from CBP FIS primary hall.



TBIT FIS APC Kiosks with LPR Technology

Arriving Legal Permanent Residents (green card holders) can now enjoy reduced wait times using the self-service kiosk as a result of latest upgrades performed by SITA. New signage has been installed in FIS primary hall to reflect the recent upgrade of APC Kiosks with new LPR capabilities now permitting LPR passengers to enjoy a more consistent travel experience.



Tom Bradley International Terminal Cont.

Smarte Carte—Work in Progress

LAWA OPS, CDG and Smarte Carte Executive Management have been working diligently to address community concerns regards Smarte Carte operation at TBIT. Excessive wait times and luggage cart availability are frequent issues voiced by the community. A collaborative effort resulted in an immediate action plan which has since been implemented. Smarte Carte committed to increase staff and implement a speedier retrieval plan to ensure consistent inventory available for arriving and departing passengers.



TBIT Self Service Kiosks

Preliminary construction has begun for the installation of the new 48 Self Service Kiosk to be installed in TBIT departure level. Some panels have been removed in the ceiling of the arrivals level to allow for the installation of the data wiring. Additional panels will be removed going forward to complete wiring. Self Service Kiosks are scheduled to come on line pre holidays 2015.

New Carousels—New Floors

August saw construction of phase three for the new FIS terrazzo floor project, due to be completed by mid-September. Thereafter, carousels 2 & 4 will come online after successfully completing rigorous testing which is currently underway. Once fully commissioned, carousels will be providing much needed support to our current baggage claim infrastructure.



Bradley West Great Hall Music

Bradley West “Great Hall” is now home to a new grand piano for the next month. There will be a live pianist twice a week, and will auto play the other days.



South Terminals Update—T4, T5, T6, T7, & T8

Terminal 4

American Airlines



American Rebranding has begun at T4

Soon you will start to see the new American Airlines logo appearing throughout Terminal 4. The rebranding process begins this month and continues until November. The new American logo will make its debut in T6 midway through October for all the existing US Airways branding.

New Concession Openings

Wahoo's and the Habit set to open middle of September at Terminal 6



The Habit Burger Grill has over 109 locations with the latest set to open in Terminal 6. Look forward to the signature burgers, shakes, and fries that will make Terminal 6 a popular stop for passengers.



Wahoo's is a Mexican style restaurant that blends Brazilian and Asian flavors in their unique fish tacos. Named after the Wahoo, a fish popular among sport fishermen due to its speed and high quality, the restaurant will bring their "fast-casual" style to LAX.

Upcoming Events

T2: Hainan Airlines plans to start service from Terminal 2 to China (subject to governmental approval).

T3: Boutique Air plans to start service to Merced from Terminal 3. Est. 10/01.

CTA: Upper level roadway work will start September 14th. Will be laying a top coat layer to even out the road. Beginning at Terminal 1, work will progress 1 lane at a time around the loop. Work is expected to last till the end of the October 2015.

This newsletter will be updated once a month. Please send any questions, or comments to:

North Terminals:

Kelly Baca-Broer

KBaca-Broer@lawa.org

Todd Lawrence

TLawrence@lawa.org

TBIT:

Christian Moreno

Cmoreno@lawa.org

Brandon Tseng

Btseng@lawa.org

Eve Mceneaney

Emcneaney@lawa.org

South Terminals:

Brandon Eaton

Beaton@lawa.org

Jose Rodriguez

Jrodriguez@lawa.org

Runway 06L/24R Extended Closure

Runway 06L/24R will be closed for extended amount of time for work on the safety areas and general repairs. The runway is expected to remain closed from the end of June to October 2015. Expect increased aircraft congestion on the airport. Following this closure, runway 06R/24L will be closed from November 2015 until October 2016. Runway 7L/25R closed Oct 2016-June 2017.

LAX Runway Construction Projects

(as of February 1, 2015)

