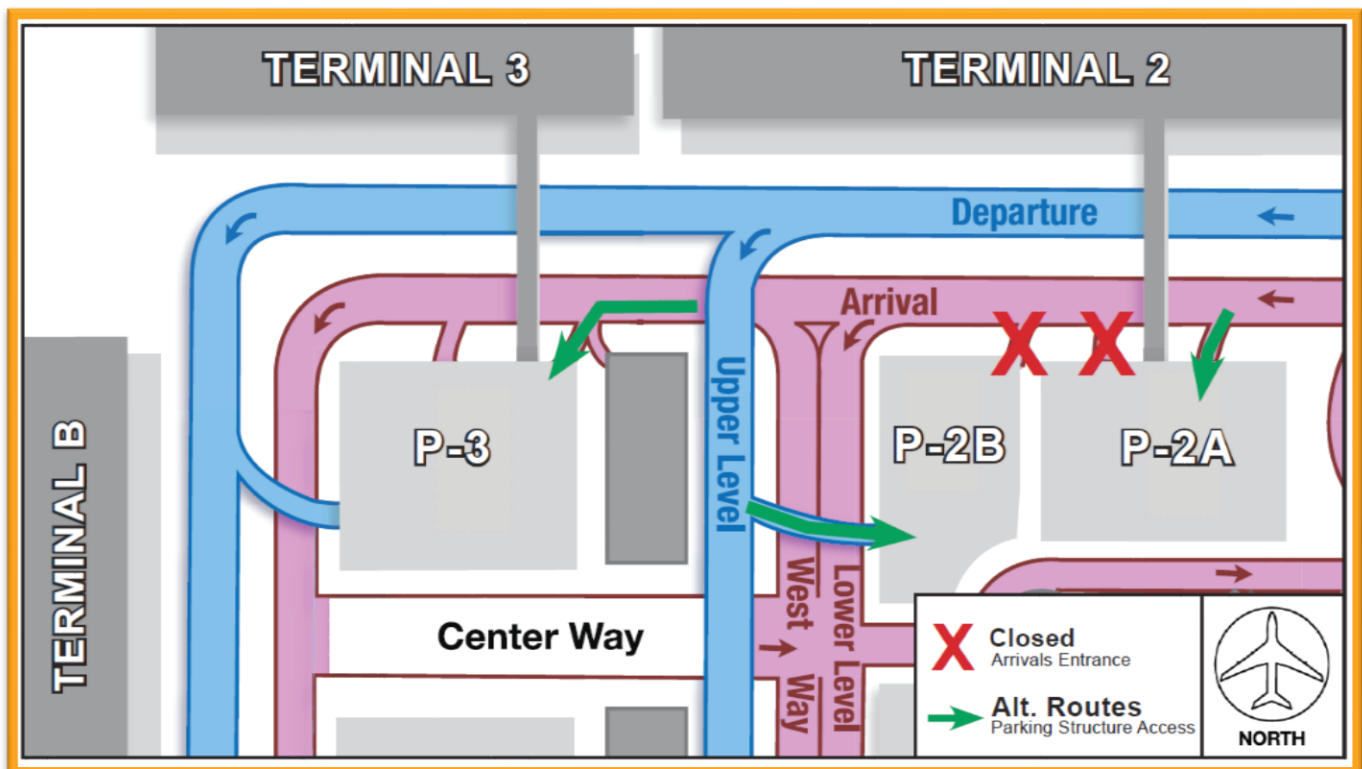


Construction Hot Topics

Week of September 21, 2020

1. Parking Structure 2B: Arrivals Entrance

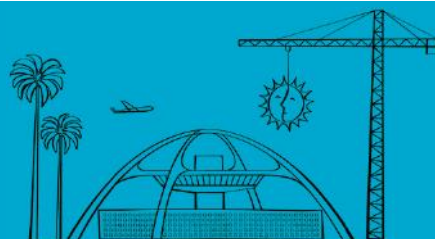
- To perform foundation work, the Automated People Mover project will close the Arrivals Level entrance to Parking Structure 2B and one of the two entrances to Parking Structure 2A continuously (24/7) through September 25, 2020
- Additionally, the Arrivals Level roadway at Terminal 2 will experience both daily and nightly lane restrictions to facilitate this work
- The Departures Level entrance to Parking Structure 2B will remain open, as well as Arrivals Level access to nearby Parking Structures 2A and 3



Parking Structure 2A and 2B entrance impacts; alternate routes shown

Change is in the Air(port).

LAX WAY BETTER. REALLY.

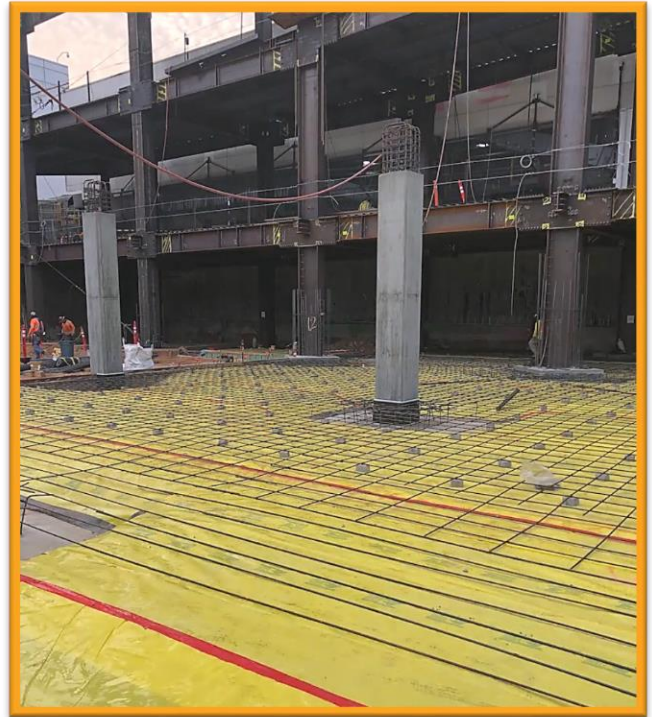


Construction Hot Topics

Week of September 21, 2020

2. Terminal 2 / 3: Construction Update

- Foundation work and steel erection continues airside on both Terminal 3 and the future Terminal 2 / 3 Head House as part of the Delta Sky Way program
- Upon completion, the Head House will facilitate ticketing, check-in and baggage claim for the two terminals and also connect to the pedestrian walkway bridge from the Automated People Mover's Center CTA Station

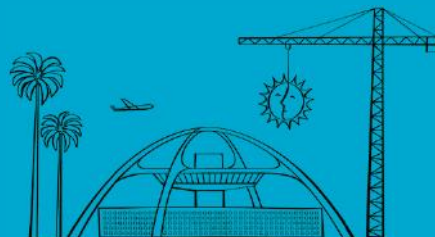


*Right: Terminal 2 / 3 Head House foundation work
Bottom: Terminal 3 steel erection progress, airside*



Change is in the Air(port).

LAX WAY BETTER. REALLY.

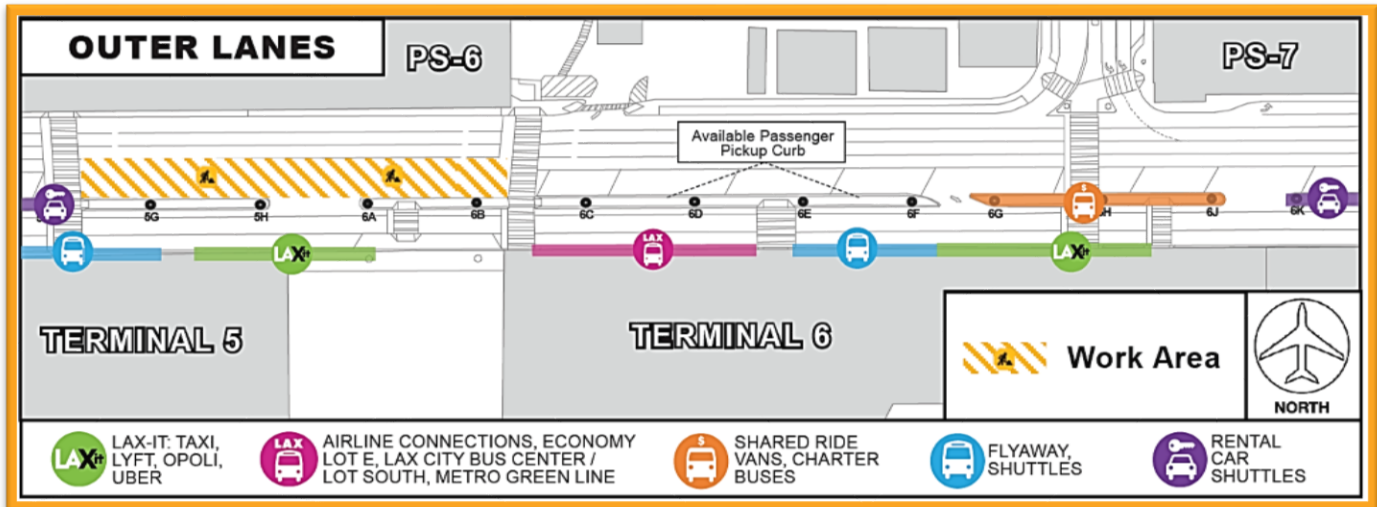


Construction Hot Topics

Week of September 21, 2020

3. Terminal 5.5: Arrivals Level Lane Restrictions

- To perform utility work, the Terminal Cores & APM Interface project will restrict Arrivals Level outer lanes between Terminals 5 & 6 nightly (12am – 8am) through September 25, 2020
- Vehicular and pedestrian traffic will be maintained at all times, including passenger pickup areas before and after the closure
- This phase of the project is scheduled to continue through October 9, 2020 with future inner lane closures; see next week's Construction Hot Topics for more details



Terminal 5.5 Arrivals Level Outer Lane Impacts

4. West CTA Station: Tower Crane Progress

- A tower crane is in the process of being built at the future West CTA Station site for the Automated People Mover project
- Pictured right, a hydraulic crane (yellow) is hard at work building the base of the tower crane (red)
- The tower crane is scheduled to be complete and operational on September 29, 2020



In-progress shot of future West CTA tower crane (red) being built

Change is in the Air(port).

LAX WAY BETTER. REALLY.

