

Construction Hot Topics

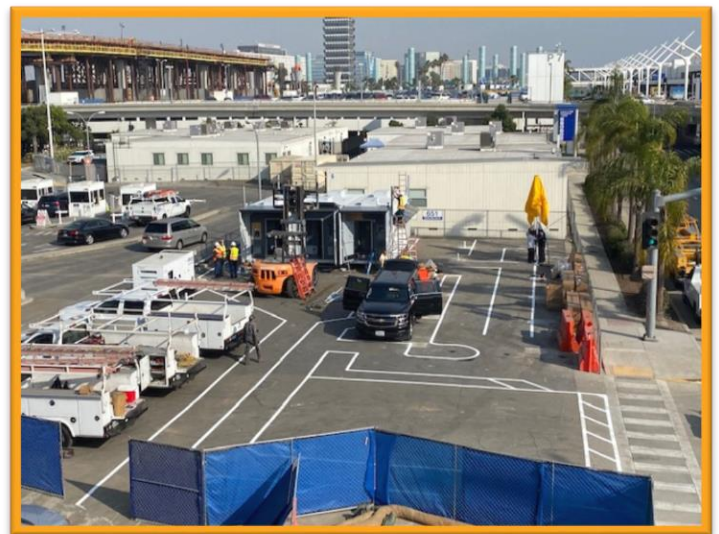
Week of November 23, 2020

1. Surface Lot 6: COVID-19 Rapid Testing Facility

- Construction continues in Surface Lot 6 (parking lot east of Parking Structure 6, south of the Theme Building) on the new COVID-19 Rapid Testing Facility
- Scheduled to open in December 2020, the new Rapid Testing Facility lab will provide additional testing options to guests and employees with results available in two to three hours
- Currently, COVID-19 testing is available at Terminal 2, Tom Bradley International Terminal (Terminal B) and Terminal 6 with test results available within 24 hours



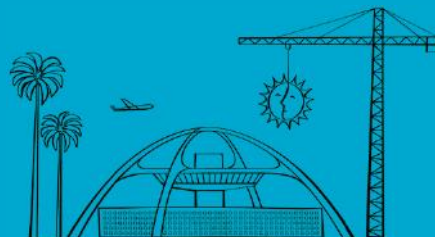
Current COVID-19 test location in Terminal 2



Surface Lot 6 COVID-19 Rapid Testing Facility construction

Change is in the Air(port).

LAX WAY BETTER. REALLY.

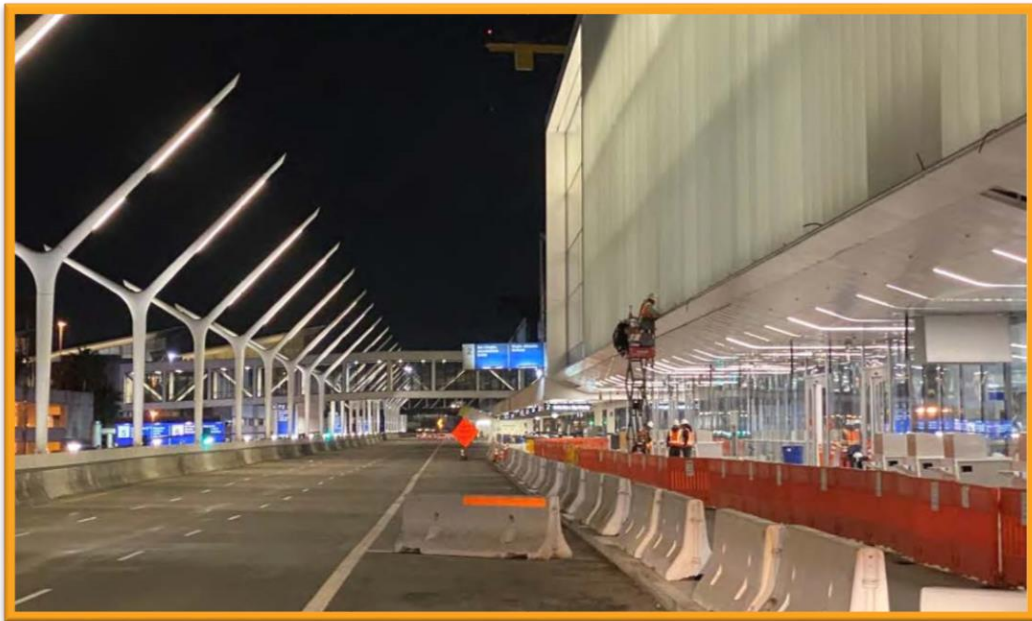


Construction Hot Topics

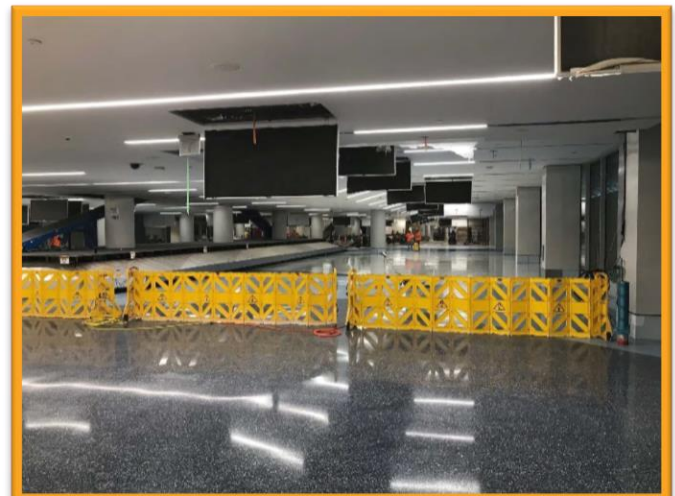
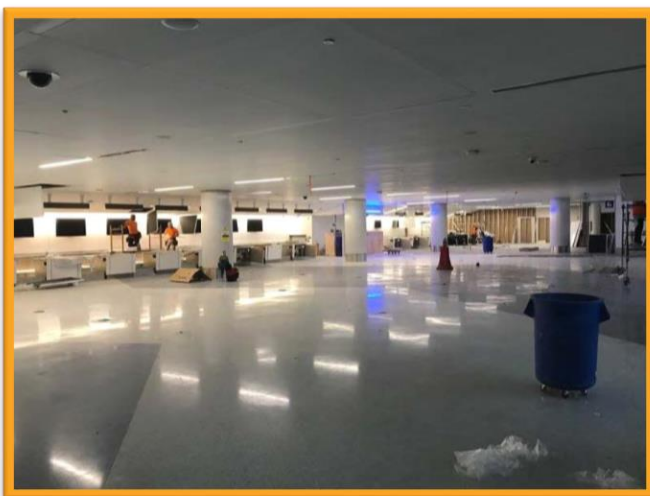
Week of November 23, 2020

2. Terminal 1.5: Construction Progress

- The Terminal 1.5 project has recently removed barricades and re-opened lanes on the Departures Level between Terminal 1 and Terminal 2 that has been closed since last year; construction K-rail remains in place while crews install finishes to the face of the new building
- Inside Terminal 1.5 finishes on both the Arrivals and Departures levels are ongoing at the future check-in and bag claim areas



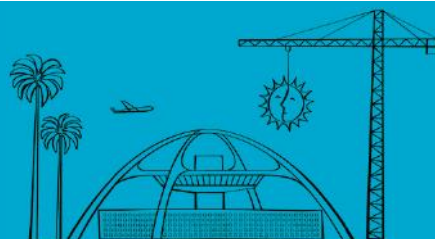
Departures Level construction barricade changes at Terminal 1.5



Check-in (left) and bag claim (right) progress inside the new Terminal 1.5

Change is in the Air(port).

LAX WAY BETTER. REALLY.



Construction Hot Topics

Week of November 23, 2020

3. LAX Holiday Moratorium

- Construction related utility and area shutdown restrictions for the LAX Thanksgiving Holiday Moratorium are in effect through Monday, November 30 at 9PM
- Next month, another holiday construction moratorium will be in effect Friday, December 18, 2020 at 6AM through Monday, January 4, 2021 at 9PM

Change is in the Air(port).

LAX WAY BETTER. REALLY.

