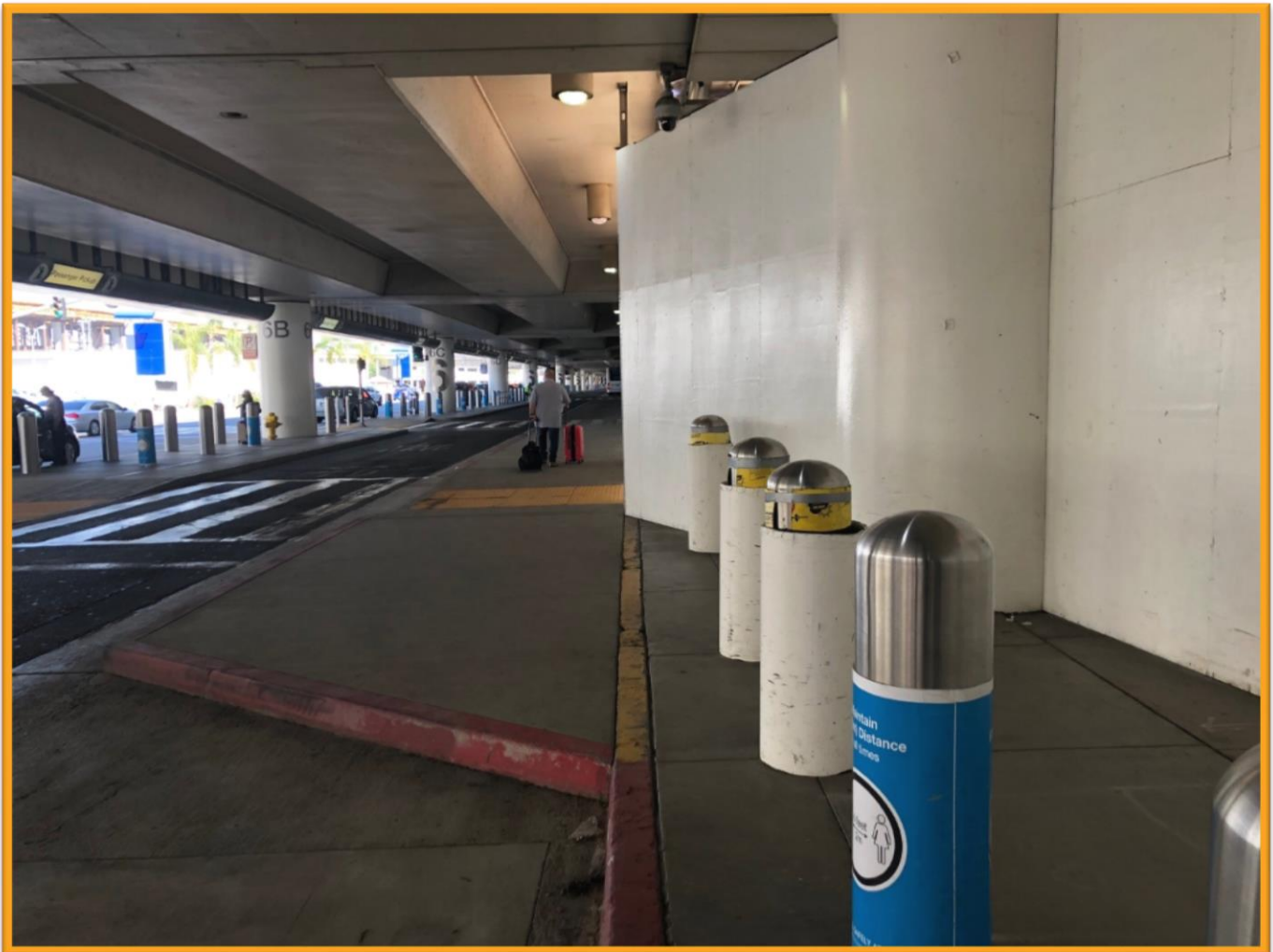


Construction Hot Topics

Week of May 10, 2021

1. Terminal 5.5: Arrivals Level Inner Lanes Re-Opened

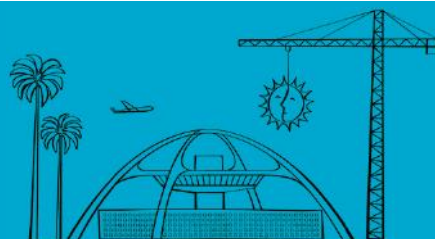
- All Arrivals Level Inner Lanes between Terminals 5 and 6 have been closed 24/7 since January 2021 to facilitate utility work for the Terminal Cores and APM Interface Project
- This portion of the project is now complete and the Inner Lanes are re-opened for shuttle operations
- The inner-most pick-up lane, pictured below, remains closed through January 2022 while it's used as a temporary pedestrian walkway to detour guests around ongoing construction



Terminal 5.5 Inner Lane Restrictions through January 2022

Change is in the Air(port).

LAX WAY BETTER. REALLY.



Construction Hot Topics

Week of May 10, 2021

2. Parking Structure 5: Entry Lane Restrictions

- To facilitate ongoing work for the ABM Smart Parking project, the Arrivals Level entrance to Parking Structure 5 will be closed continuously through Friday, May 14
- Guests are directed to use the Departures Level entrance; egress from the structure is maintained at all times
- Upon completion of this portion of work, the Departures Level entrance is scheduled to close continuously beginning Friday, May 14 through Friday, May 21
- During this phase of the project, the Arrivals Level entrance will remain open and egress from the structure will be maintained at all times



Parking Structure 5 Arrivals Entrance Closed through 5/14/21

Change is in the Air(port).

LAX WAY BETTER. REALLY.



Construction Hot Topics

Week of May 10, 2021

3. Terminal 5.5: Construction Progress

- The Terminal 5.5 Core project continues to make progress with ongoing structural work visible from the Central Terminal Area
- Upon completion, the new Terminal 5.5 building will provide more connectivity between Terminals 5 and 6 and also feature a pedestrian bridge to the Automated People Mover's Center Station
- As construction continues, drop-off and pick-up lanes on the Arrivals and Departures Levels are being used as temporary pedestrian walkways; traffic is maintained at all times



Terminal 5.5 Progress from December 2020 to May 2021



Change is in the Air(port).

LAX WAY BETTER. REALLY.

