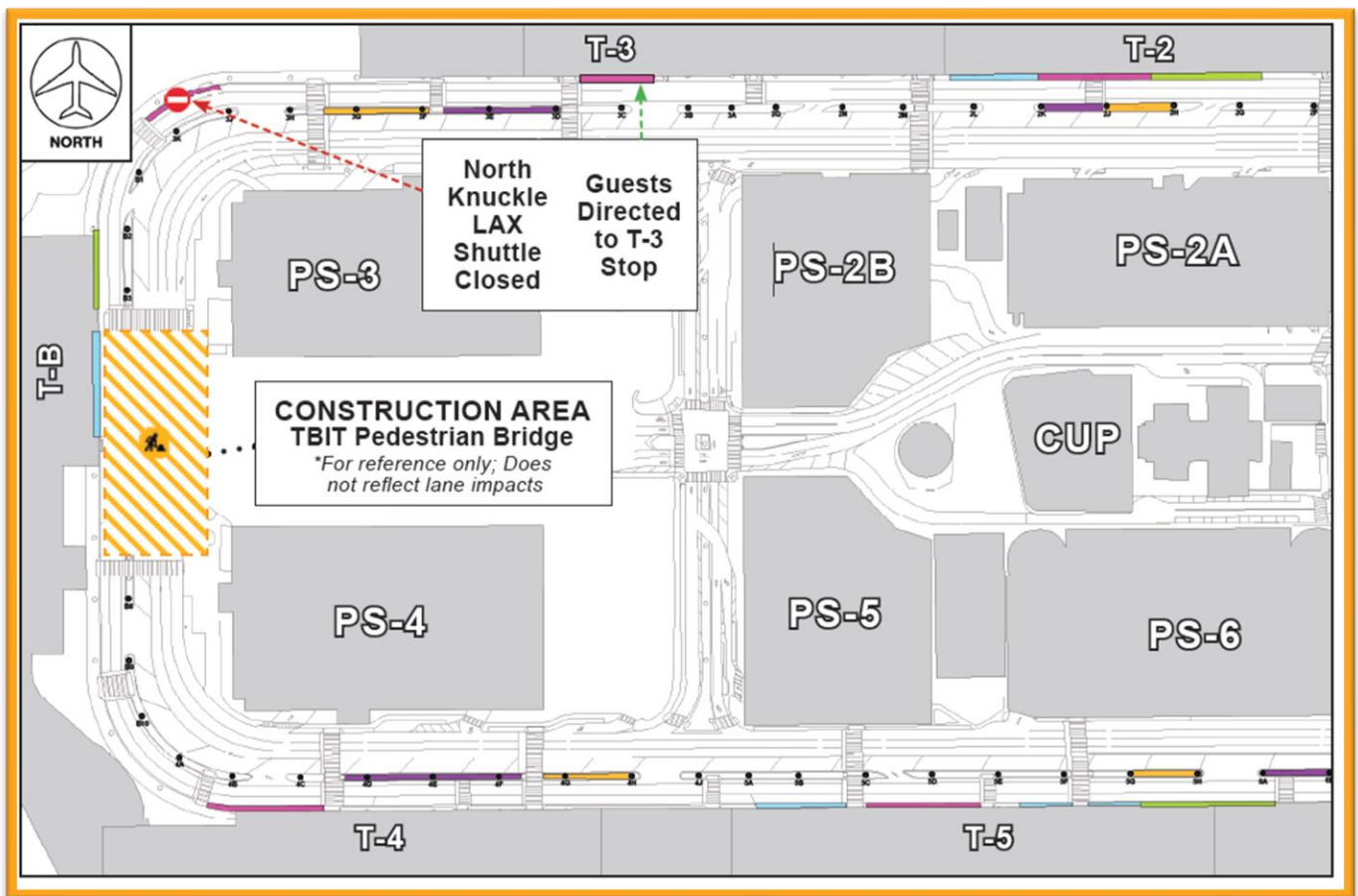


Construction Hot Topics

Week of September 12, 2022

1. Terminal B: APM Pedestrian Bridge Construction

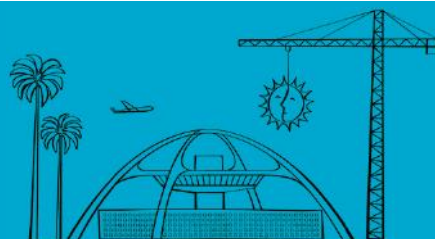
- The Automated People Mover project will construct a Pedestrian Bridge over the roadways at Terminal B to connect the terminal to the West CTA Station; construction will require various nightly lane restrictions and / or full closures on World Way at Terminal B beginning next week through the end of October
- To facilitate construction, the LAX Shuttle Stop at the North Knuckle is closed 24/7 effective Sunday, September 11 through Saturday, October 22; guests are being directed to the next available stop at Terminal 3
- Watch Construction Hot Topics next week for additional information about this project and anticipated impacts



The map above highlights the general construction area of impact for the APM's Terminal B Pedestrian Bridge, scheduled to start next week, as well as the current 24/7 closure of the North Knuckle LAX Shuttle Stop (pink shuttle)

Change is in the Air(port).

LAX WAY BETTER. REALLY.

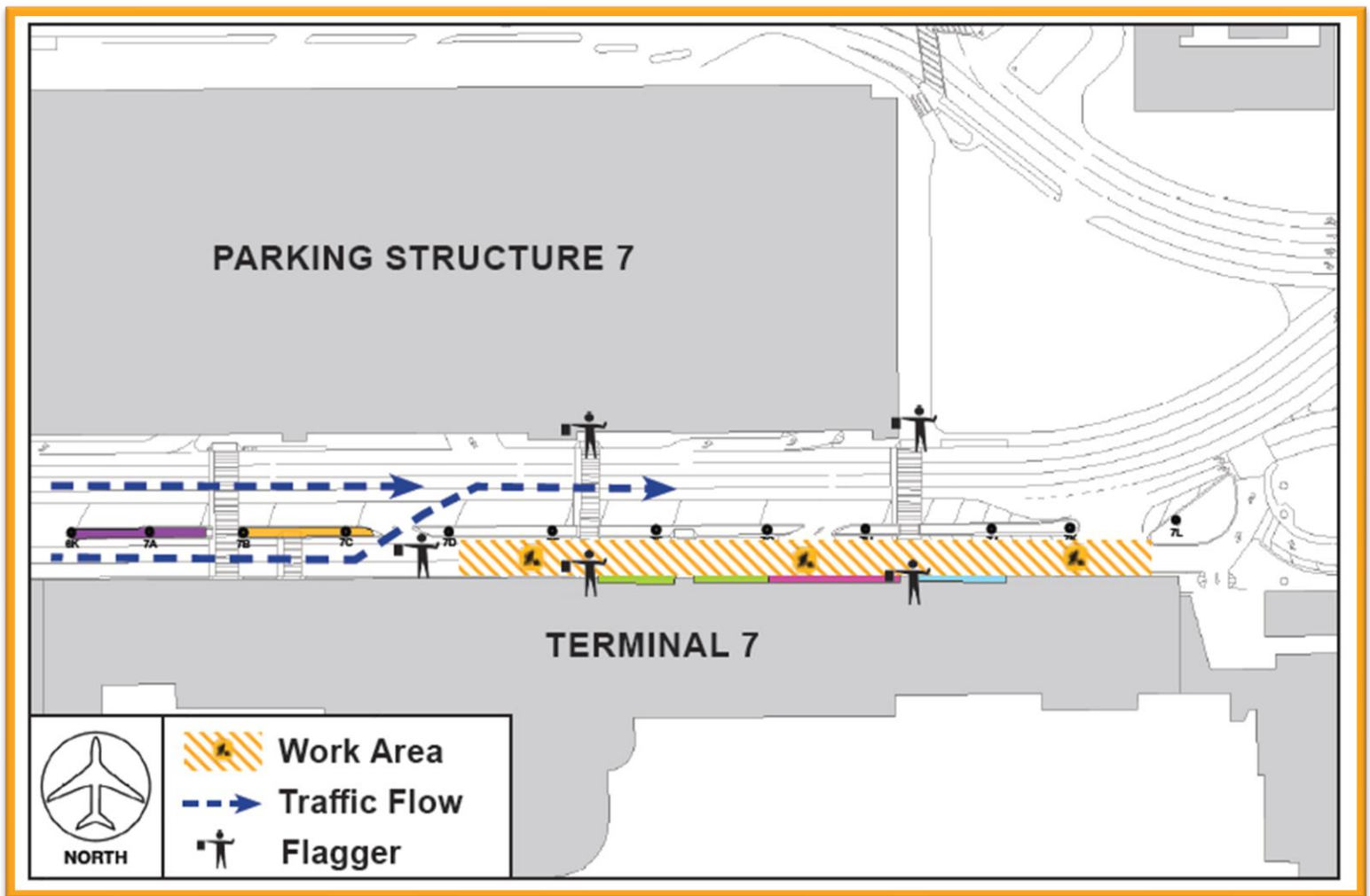


Construction Hot Topics

Week of September 12, 2022

2. Arrivals Level Inner Lanes: Restrictions for LAMP Utility Work

- To facilitate utility installation for the Landside Access Modernization Program, Arrivals Level Inner Lanes at Terminal 7 will be restricted beginning Monday, September 12 through Thursday, November 17, nightly from 1AM to 7AM
- When Inner Lane shuttle stops are impacted, the stops will be closed and guests will be directed to the next available stop
- Flaggers will be in place to assist with the maintenance of vehicular and pedestrian traffic, including crosswalks
- This is part of a larger phased project; watch Construction Hot Topics for more information on future impacts



Terminal 7 Inner Lanes will be closed nightly through November 17, 2022

Change is in the Air(port).

LAX WAY BETTER. REALLY.



Construction Hot Topics

Week of September 12, 2022

3. Terminal 4.5: Removal of Curbside Barricades & Temporary Sidewalks

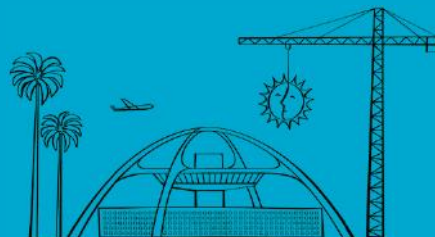
- The curbside barricades and temporary pedestrian sidewalks in place on both the Arrivals and Departures Levels between Terminals 4 and 5 are being removed over the coming weeks
- The barricades on both levels were demolished last week; the temporary sidewalks in place over the drop-off and pick-up lanes will be demolished this week nightly between September 12 and September 15
- Please note: The barricades being removed are for the Terminal 4.5 Vertical Core and are located between Terminals 4 and 5; the barricades in place for the Terminal 4/5 Modernization Program, closer to Terminal 4 on the west side, remain in place
- The barricades and temporary sidewalks have been in place since 2020 to facilitate construction by the Terminal 4.5 Vertical Core & APM Interface Project



Terminal 4.5 Core Barricades and Temporary Sidewalk Extension are being removed this month; Barricades and temporary sidewalk in place for the AA T4/5 Modernization Program remain in place

Change is in the Air(port).

LAX WAY BETTER. REALLY.

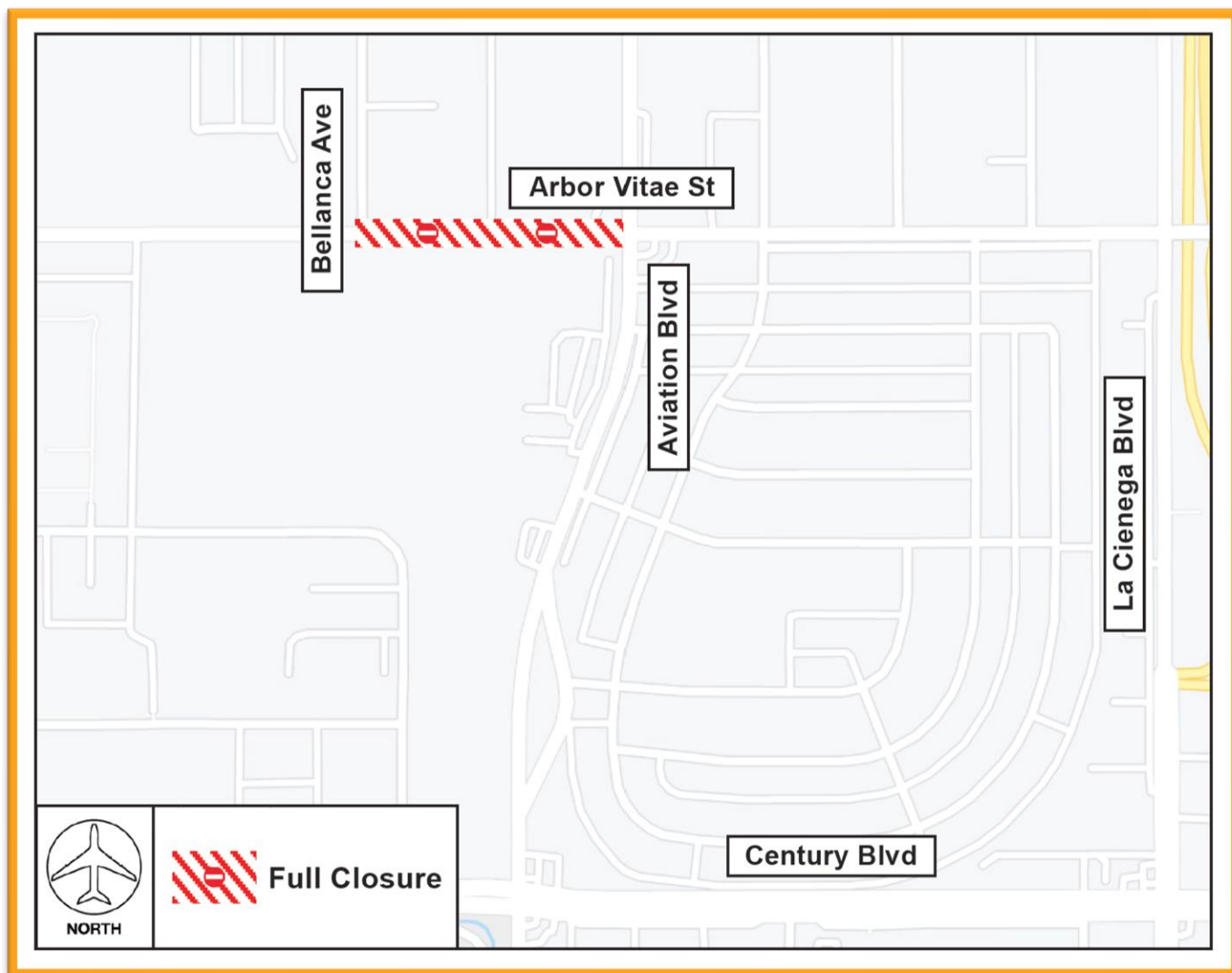


Construction Hot Topics

Week of September 12, 2022

4. Arbor Vitae Street: Full Weekend Closure

- To facilitate work for a third-party project, Arbor Vitae Street between Bellanca Avenue and Aviation Boulevard will be fully closed beginning Friday, September 16 at 9PM continuous through Sunday, September 18 at 5AM
- Motorists traveling to LAX using this route should plan ahead for potential delays and be prepared to follow all detour routes



Arbor Vitae Street between Bellanca Avenue and Aviation Boulevard will be closed this weekend, 9/16 – 9/18

Change is in the Air(port).

LAX WAY BETTER. REALLY.

