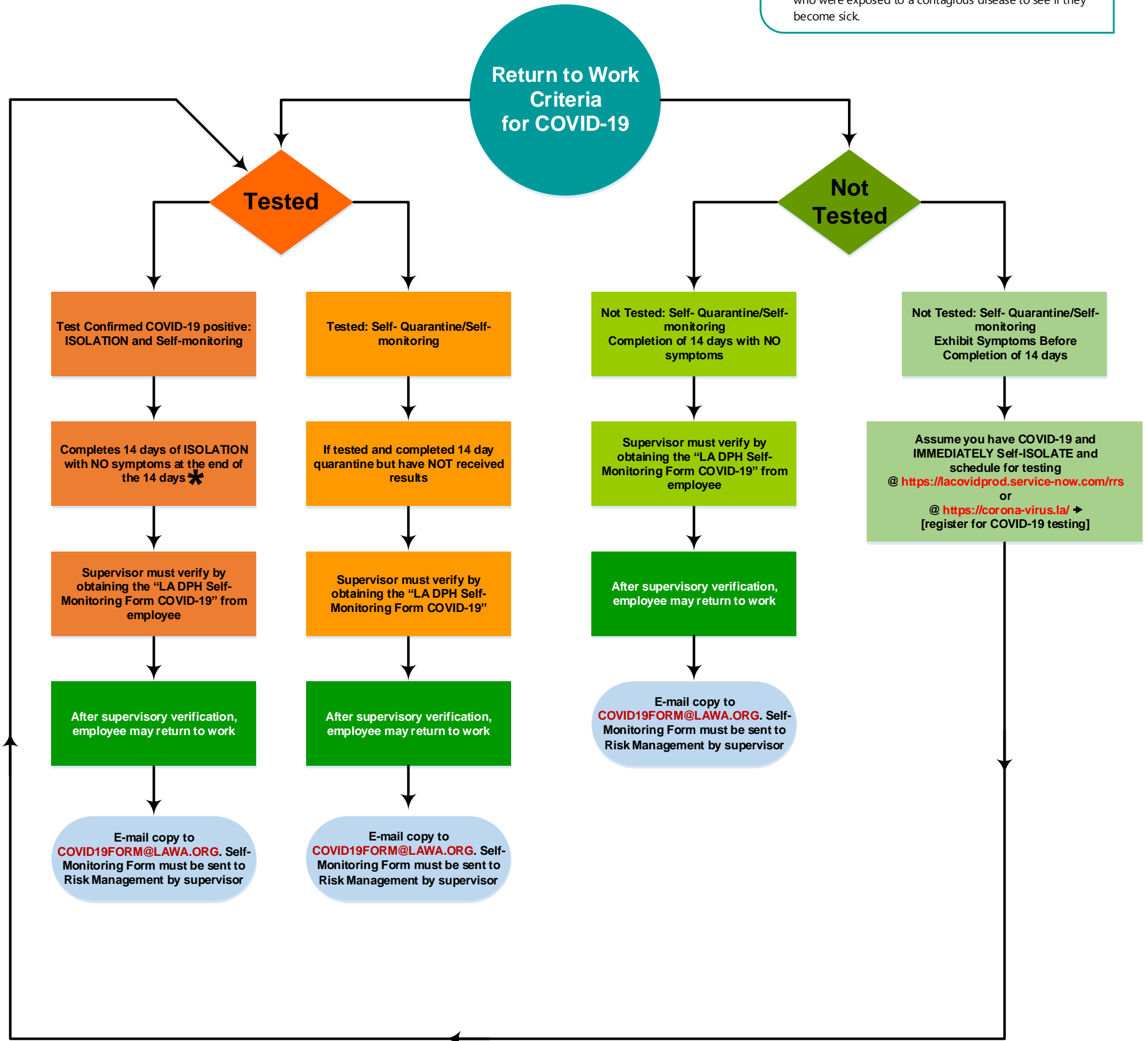


UPDATED!

Return to Work Criteria for Suspected or Confirmed COVID-19 Exposed Employees (Interim Guidance)

Isolation and Quarantine as Defined by CDC

- **Isolation** separates sick people with a contagious disease from people who are not sick. If you are sick you **MUST** isolate yourself from any contact with other persons.
- **Quarantine** separates and restricts the movement of people who were exposed to a contagious disease to see if they become sick.



AS OF 7/15/2020



NOTES:

- This information may be adapted or changed as state and local health departments respond to rapidly changing circumstances.

* 14 days commence at onset of symptoms.